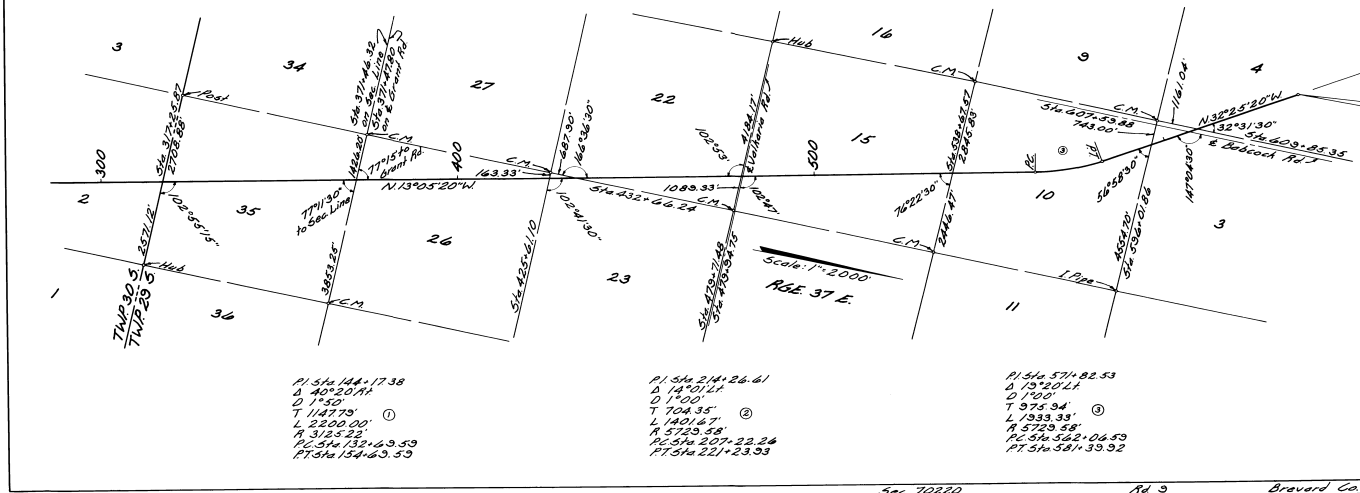


76 Sheet No 2



P1 Sta 144+17.38
 Δ 40° 20' 11"
 D 1' 50"
 T 1147.75' ①
 L 2200.00'
 H 3124.53'
 PC Sta 132+63.53
 PT Sta 134+63.53

P1 Sta 214+26.61
 Δ 14° 01' 11"
 D 1' 00"
 T 704.35' ②
 L 1401.87'
 H 5723.58'
 PC Sta 207+22.24
 PT Sta 221+23.33

P1 Sta 571+82.53
 Δ 75° 20' 11"
 D 1' 00"
 T 375.34'
 L 1933.33'
 H 5723.58'
 PC Sta 562+06.53
 PT Sta 581+33.92

Sec. 70220 Ad 3 Bravard Co. J.H.K.