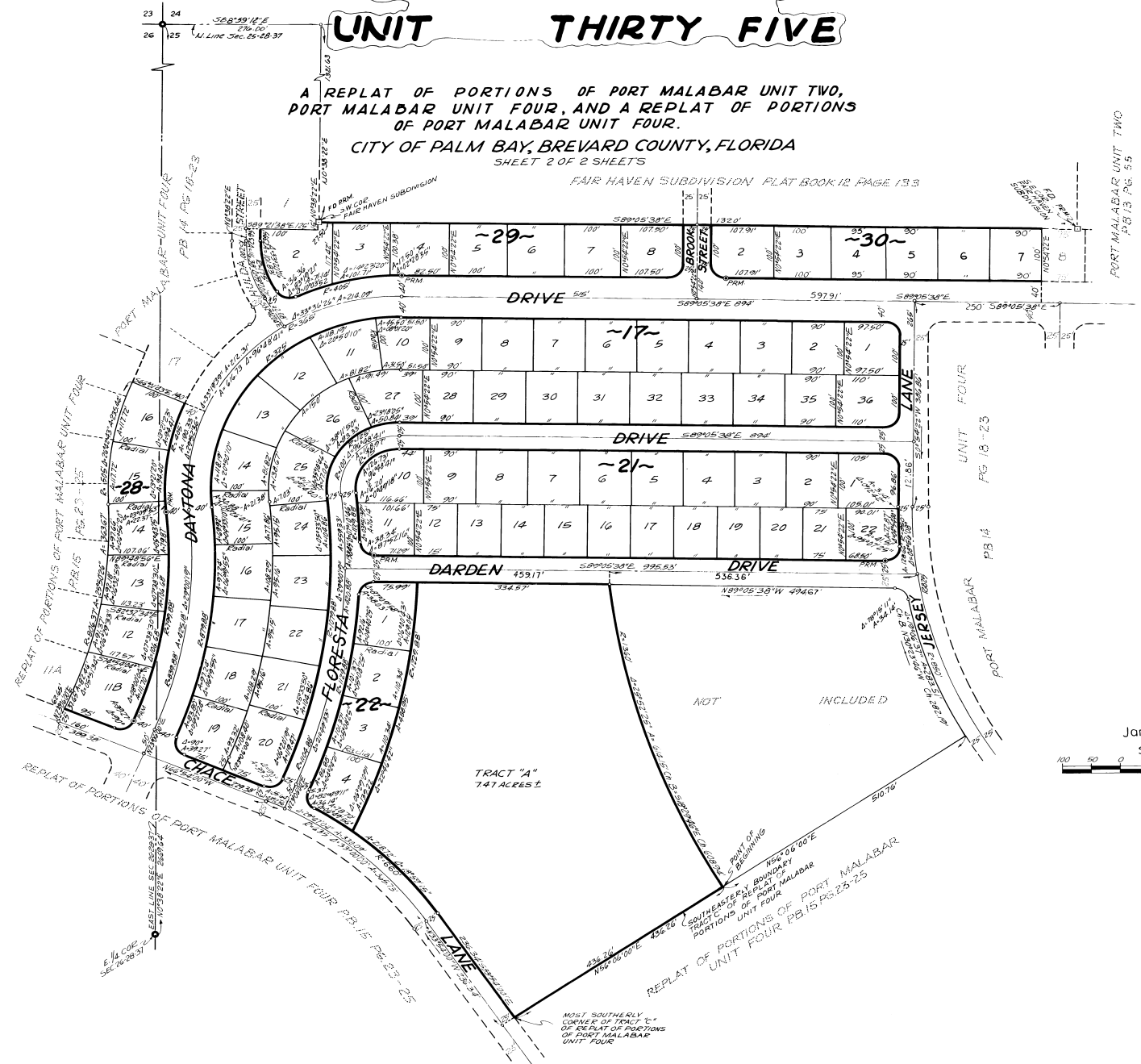


PORT MALABAR UNIT THIRTY FIVE

A REPLAT OF PORTIONS OF PORT MALABAR UNIT TWO,
PORT MALABAR UNIT FOUR, AND A REPLAT OF PORTIONS
OF PORT MALABAR UNIT FOUR.
CITY OF PALM BAY, BREVARD COUNTY, FLORIDA
SHEET 2 OF 2 SHEETS

FAIR HAVEN SUBDIVISION PLAT BOOK 12 PAGE 13.3



January 1964
Scale: 1"=100'
0 50 100 200 300

CALCULATED BY: R.L.
DRAWN BY: J.E.B.
CHECKED BY: R.G.
APPROVED BY: J.B.

JAMES EDWARD CLARK
CIVIL ENGINEER
MIAMI - FLORIDA

SHEET 2 OF 2 SHEETS
82 LOTS THIS SHEET