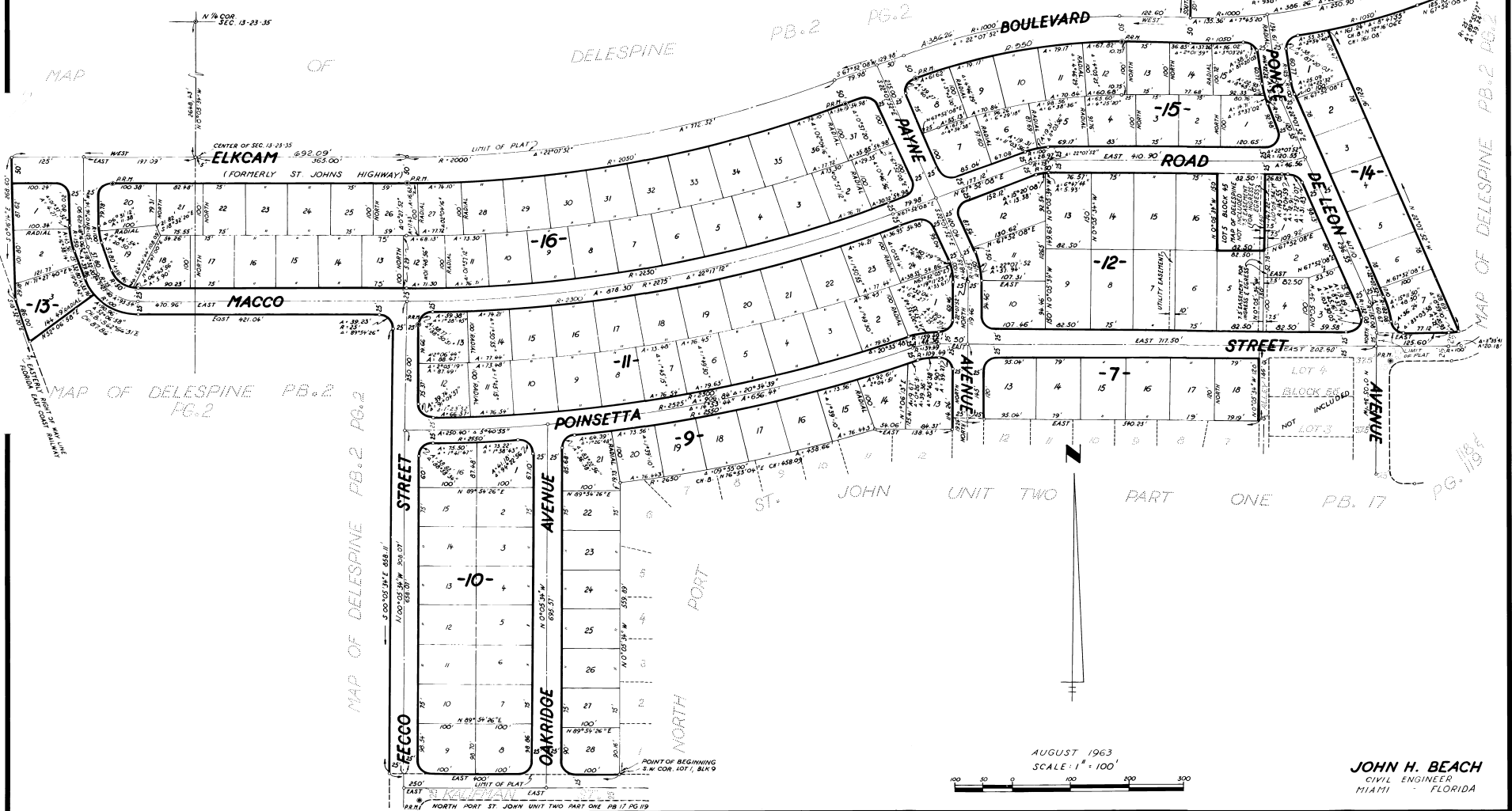


# NORTH PORT ST. JOHN UNIT - TWO PART - TWO

A RESUBDIVISION OF A PORTION OF MAP OF DELESPINE, PLAT BOOK 2, PAGE 2,  
SECTION 13, TOWNSHIP 23 SOUTH, RANGE 35 EAST  
BREVARD COUNTY-FLORIDA

SHEET 2 OF 2 SHEETS



CALCULATED BY: REG  
DRAWN BY: K.P.L.  
CHECKED BY: J.C.C.  
APPROVED BY: J.E.C.

AUGUST 1963  
SCALE: 1" = 100'

JOHN H. BEACH  
CIVIL ENGINEER  
MIAMI FLORIDA