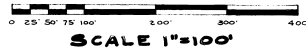


RE SUBDIVISION OF BAKER'S SUBDIVISION UNIT NO. 1

A SUBDIVISION LYING IN THE S.W. 1/4 OF SECTION 4 & N.W. 1/4 OF SECTION 9, TOWNSHIP 22 SOUTH, RANGE 35 EAST. BREVARD COUNTY, FLORIDA

PREPARED BY
TOM GRU SURVEYORS
TITUSVILLE, FLORIDA



NOTE:

THIS BEING A REPLAT OF BAKER'S SUBDIVISION UNIT NO. 1, AS RECORDED IN PLAT BOOK 13 AT PAGE 66 OF THE OFFICIAL RECORDS OF BREVARD COUNTY, FLORIDA.

DEDICATION
KNOW ALL MEN BY THESE PRESENTS, That the Corporation named below, being the owner in fee simple of the lands described in the foregoing caption to this plat, hereby dedicates said lands and plat for the uses and purposes therein expressed and dedicates the Streets, alleys, thoroughfares, parks, canals and drainage easements shown hereon to the perpetual use of the public; and
IN WITNESS WHEREOF, has caused these presents to be signed and attested to by the officers named below and its corporate seal to be affixed hereto on
C.E.M. INC. Dec 28, 1962
By Manuel Baker President
Attest: Carolyn D. Baker Secretary

Signed and sealed in the presence of:
Clair P. Deau
Wm. J. Pasland
Lucille B. Harris

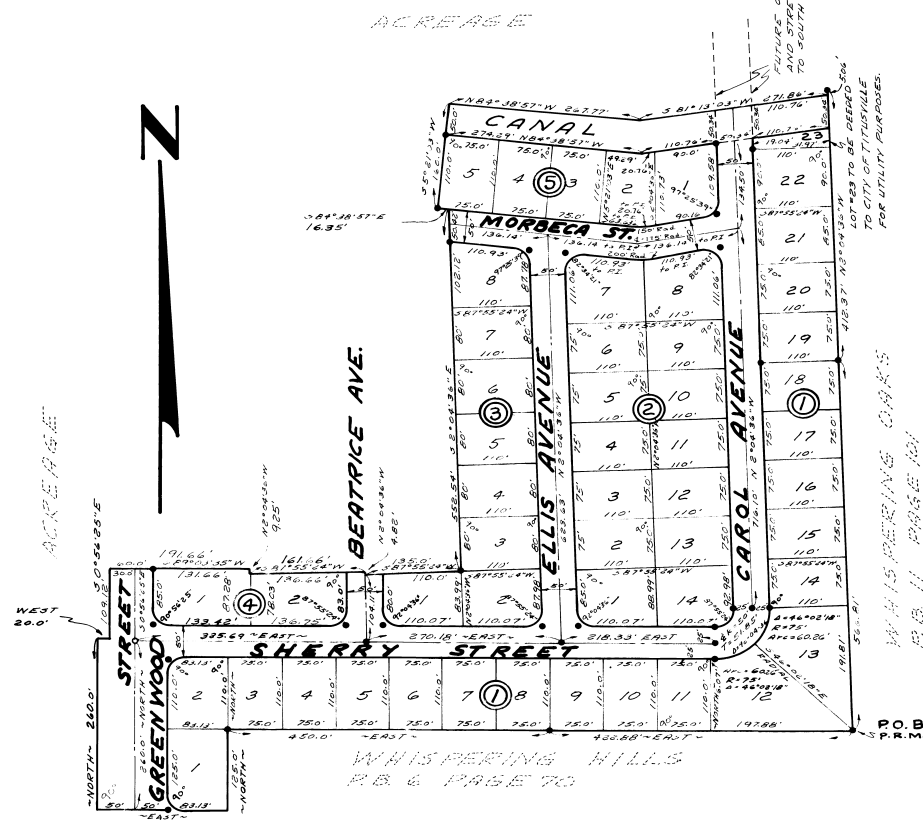
STATE OF FLORIDA COUNTY OF BREVARD
THIS IS TO CERTIFY, That on December 28, 1962 before me, an officer duly authorized to take acknowledgments in the State and County aforesaid, personally appeared MANUEL BAKER and CAROLYN D. BAKER respectively, President and SECRETARY of the above named corporation incorporated under the laws of the State of FLORIDA, to me known to be the individuals and officers described in and who executed the foregoing Dedication and severally acknowledged the execution thereof to be their free act and deed as such officers thereto duly authorized; that the official seal of said corporation is duly affixed thereto; and that the said Dedication is the act and deed of said corporation.
IN WITNESS WHEREOF, I have hereto set my hand and seal on the above date.
Lucille B. Harris
NOTARY PUBLIC
My Commission Expires Nov. 3, 1966

DESCRIPTION

A PART OF SECTION 4 & 9, TOWNSHIP 22 SOUTH, RANGE 35 EAST; AND BEING MORE FULLY DESCRIBED AS FOLLOWS:

BEGIN AT THE SW CORNER OF LOT 11, BLOCK A, WHISPERING OAKS, ACCORDING TO THE PLAT THEREOF RECORDED IN PLAT BOOK 11, AT PAGE 101, OF THE PUBLIC RECORDS OF BREVARD COUNTY, FLORIDA; THENCE RUN ON AN ASSUMED BEARING OF N.2°04'36"W. FOR A DISTANCE OF 974.12; THENCE S.81°15'03"W. FOR A DISTANCE OF 271.84 FEET; THENCE N.64°28'57"W FOR A DISTANCE OF 261.77 FEET; THENCE S.5°21'03"W FOR A DISTANCE OF 160.00 FEET; THENCE S.84°38'67"E. FOR A DISTANCE OF 14.35 FEET; THENCE S.2°04'36"E. FOR A DISTANCE OF 652.54 FEET; THENCE S.87°55'24"W. FOR A DISTANCE OF 135.0' FEET; THENCE N.2°04'36"W. FOR A DISTANCE OF 4.82 FEET; THENCE S.87°55'24"W. FOR A DISTANCE OF 161.66 FEET; THENCE N.2°04'36"W. FOR A DISTANCE OF 9.25 FEET; THENCE S.89°03'35"W FOR A DISTANCE OF 191.66 FEET; THENCE S.0°56'23"E. FOR A DISTANCE OF 109.12 FEET; THENCE WEST FOR A DISTANCE OF 20.0 FEET; THENCE SOUTH FOR A DISTANCE OF 260.0 FEET; THENCE EAST FOR A DISTANCE OF 183.13 FEET; THENCE NORTH FOR A DISTANCE OF 125.0 FEET; THENCE EAST FOR A DISTANCE OF 872.88 FEET TO THE POINT OF BEGINNING.

THE ABOVE DESCRIBED PROPERTY BEING CONTIGUOUS TO WHISPERING OAKS, PLAT BOOK 11, PAGE 101, BREVARD COUNTY RECORDS, ALONG ITS EAST LINE; AND BEING CONTIGUOUS ALONG ITS SOUTH LINE TO WHISPERING HILLS, RECORDED IN PLAT BOOK 6, PAGE 70, BREVARD COUNTY, FLORIDA.



CERTIFICATE OF SURVEYOR
KNOW ALL MEN BY THESE PRESENTS: That the undersigned, being a licensed and registered land surveyor, does hereby certify that on FEBRUARY 6, 1963 he completed the survey of the lands as shown in the foregoing plat, that said plat is a correct representation of the lands therein described and plotted; that permanent reference monuments have been placed as shown thereon as required by Chapter 177, Florida Statutes; and that said lands are located in Brevard County, Florida. Dated FEBRUARY 6, 1963
Tom C. Cunningham Registration No. 1342

CERTIFICATE OF APPROVAL BY MUNICIPALITY
THIS IS TO CERTIFY, That on _____ the _____ approved the foregoing plat.
SEAL
MAYOR.
ATTEST: _____ CITY CLERK.

CERTIFICATE OF APPROVAL BY BOARD OF COUNTY COMMISSIONERS
THIS IS TO CERTIFY, That on MARCH 7, 1963 the foregoing plat was approved by the Board of County Commissioners of Brevard County, Florida.
Joe D. Sullivan Chairman of the Board.
Attest: _____ Clerk of the Board.
Approved: Ed. J. Greaney County Engineer

CERTIFICATE OF APPROVAL BY ZONING COMMISSION
THIS IS TO CERTIFY, That on FEB 21, 1963 the Zoning Commission of the above Municipality approved the foregoing plat.
Ed. J. Greaney Zoning Director.

CERTIFICATE OF CLERK
I HEREBY CERTIFY, That I have examined the foregoing plat and find that it complies in form with all the requirements of Chapter 177, Florida Statute, and was filed for record on MAY 17, 1963 at 10:51 AM to the 343290 file.
Carl A. Frank
Clerk of the Circuit Court in and for Brevard County, Fla.

SURVEYORS' NOTES:
• Located by magnetic declination. All lines are shown as 1/4 inch. Lot dimensions are in block lines as shown. 5' Utility Easement reserved on both side and rear lines of all lots.