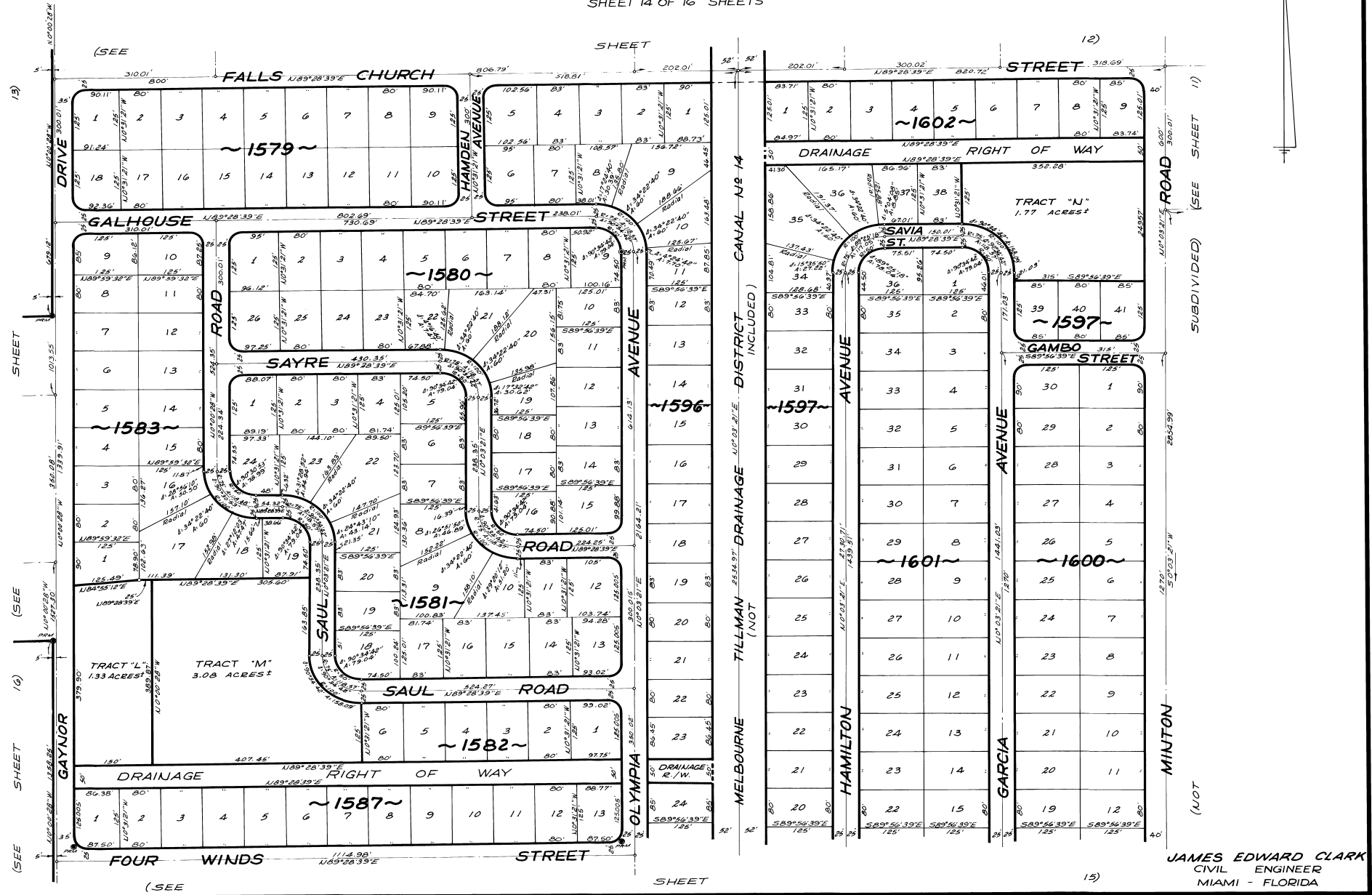


PORT MALABAR UNIT THIRTY TWO

PLAT Book 17
Page 47

DECEMBER - 1962
Scale: 1"=100'

A SUBDIVISION OF PORTIONS OF SECTIONS 12, 13 AND 24,
TOWNSHIP 29 SOUTH, RANGE 36 EAST
CITY OF PALM BAY, BREVARD COUNTY, FLORIDA
SHEET 14 OF 16 SHEETS



CALCULATED BY: R.G.
DRAWN BY: ECG
CHECKED BY: JB
APPROVED BY:

JAMES EDWARD CLARK
CIVIL ENGINEER
MIAMI - FLORIDA

SHEET 14 OF 16 SHEETS
215 LOTS THIS SHEET