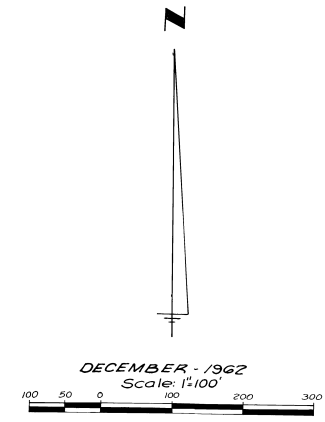
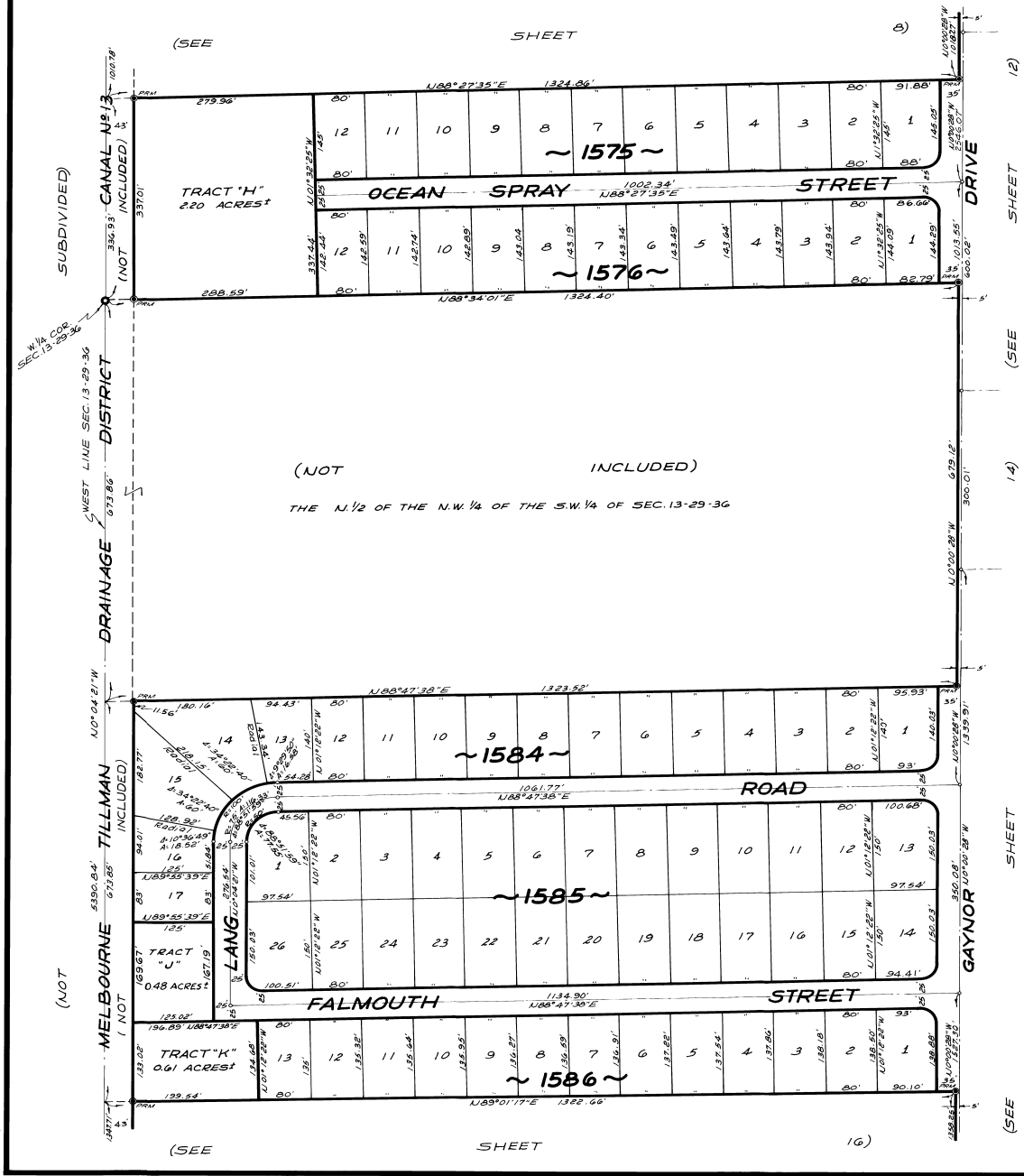


PORT MALABAR UNIT THIRTY TWO

A SUBDIVISION OF PORTIONS OF SECTIONS 12, 13 AND 24,
TOWNSHIP 29 SOUTH, RANGE 36 EAST
CITY OF PALM BAY, BREVARD COUNTY, FLORIDA
SHEET 13 OF 16 SHEETS



CALCULATED BY - R.E.
DRAWN BY - R.C.
CHECKED BY - J.B.
APPROVED BY -

JAMES EDWARD CLARK
CIVIL ENGINEER
MIAMI - FLORIDA