

# PORT MALABAR UNIT THIRTY TWO

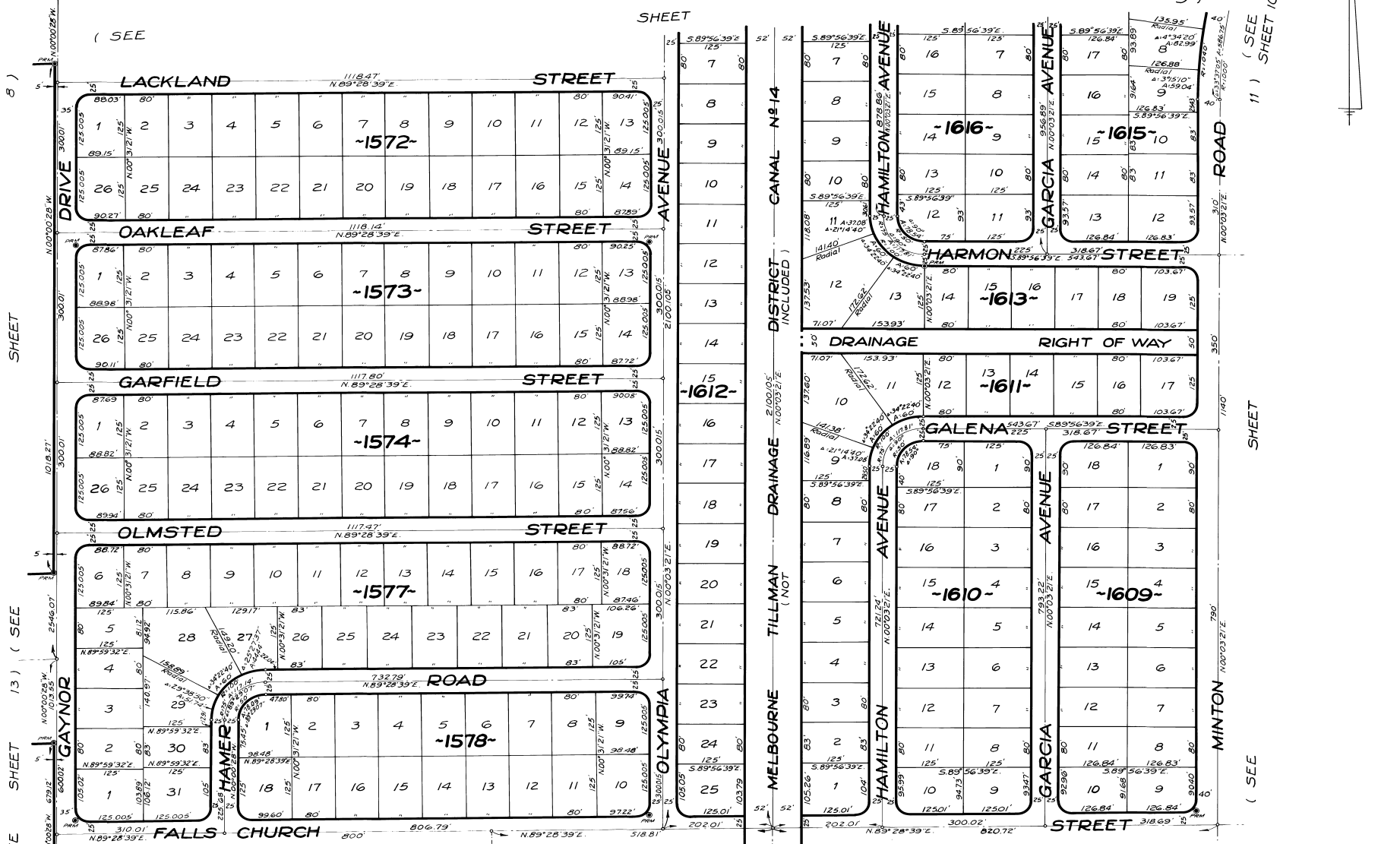
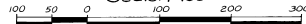
PLAT Book 17  
Page 45

A SUBDIVISION OF PORTIONS OF SECTIONS 12, 13 AND 24,  
TOWNSHIP 29 SOUTH, RANGE 36 EAST  
CITY OF PALM BAY, BREVARD COUNTY, FLORIDA

SHEET 12 OF 16 SHEETS

DECEMBER, 1962

Scale: 1"=100'



CALCULATED BY-RC  
DRAWN BY-ZZ  
CHECKED BY-JB  
APPROVED BY-

JAMES EDWARD CLARK  
CIVIL ENGINEER  
MIAMI - FLORIDA