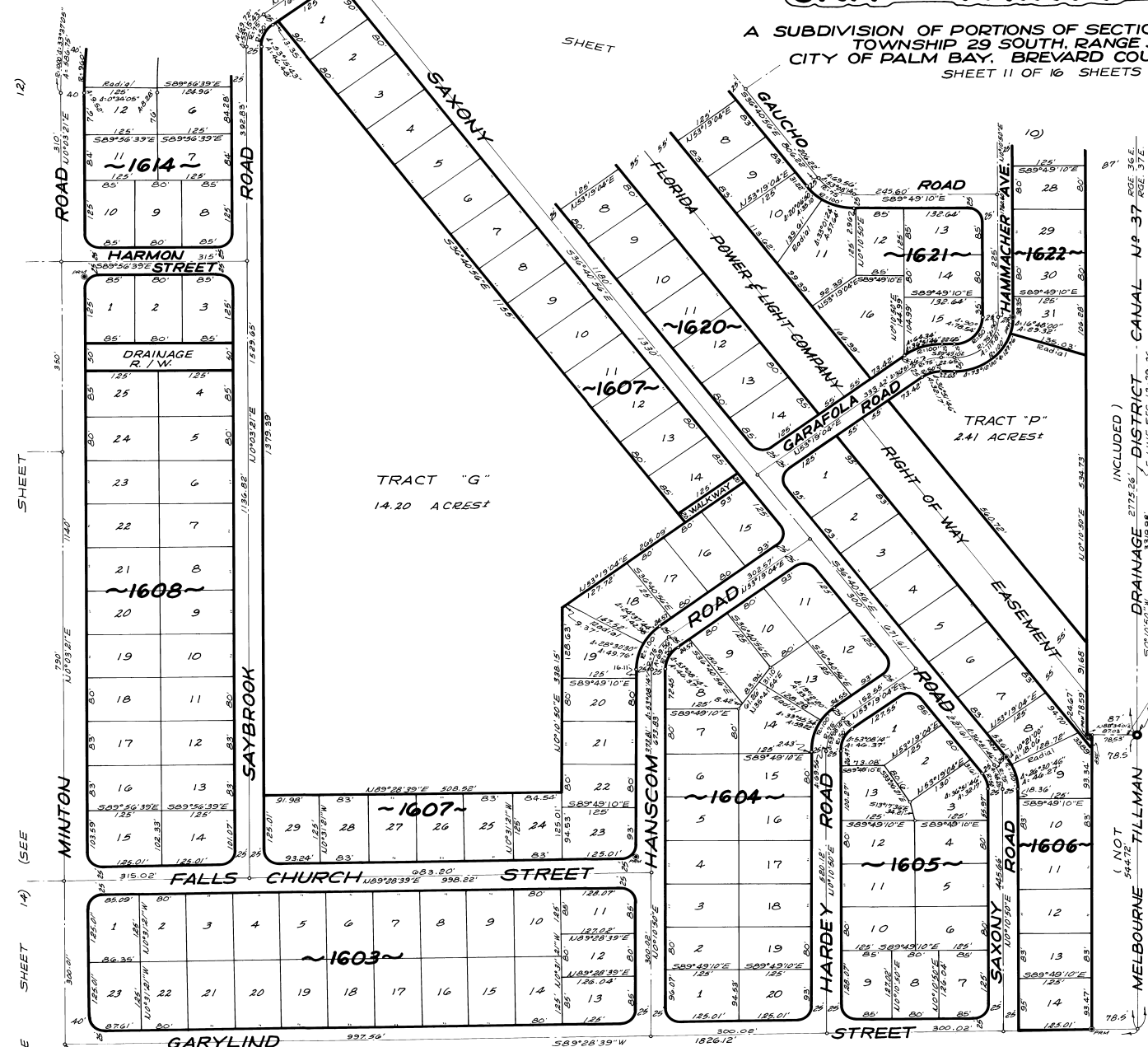


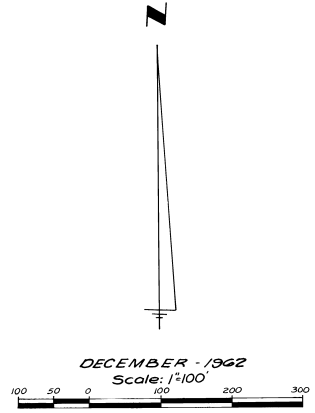
PORT MALABAR UNIT THIRTY TWO

A SUBDIVISION OF PORTIONS OF SECTIONS 12, 13 AND 24,
TOWNSHIP 29 SOUTH, RANGE 36 EAST
CITY OF PALM BAY, BREVARD COUNTY, FLORIDA
SHEET 11 OF 16 SHEETS

PLAT BOOK 17
Page 44



(NOT INCLUDED) DISTRICT CANAL N.P. 37 35'E 156.0' 35'E
 50°10'50"W 339.98' E LINE SEC. 13-29-36
 LAND COMPANY P.B. 1 7 P.5. 165
 MELBOURNE TILLMAN INDIAN PRIVATE 529-300
 FLORIDA



CALCULATED BY - R.G.
DRAWN BY - ECQ
CHECKED BY - JB
APPROVED BY -

JAMES EDWARD CLARK
CIVIL ENGINEER
MIAMI - FLORIDA

SHEET 11 OF 16 SHEETS
151 LOTS THIS SHEET