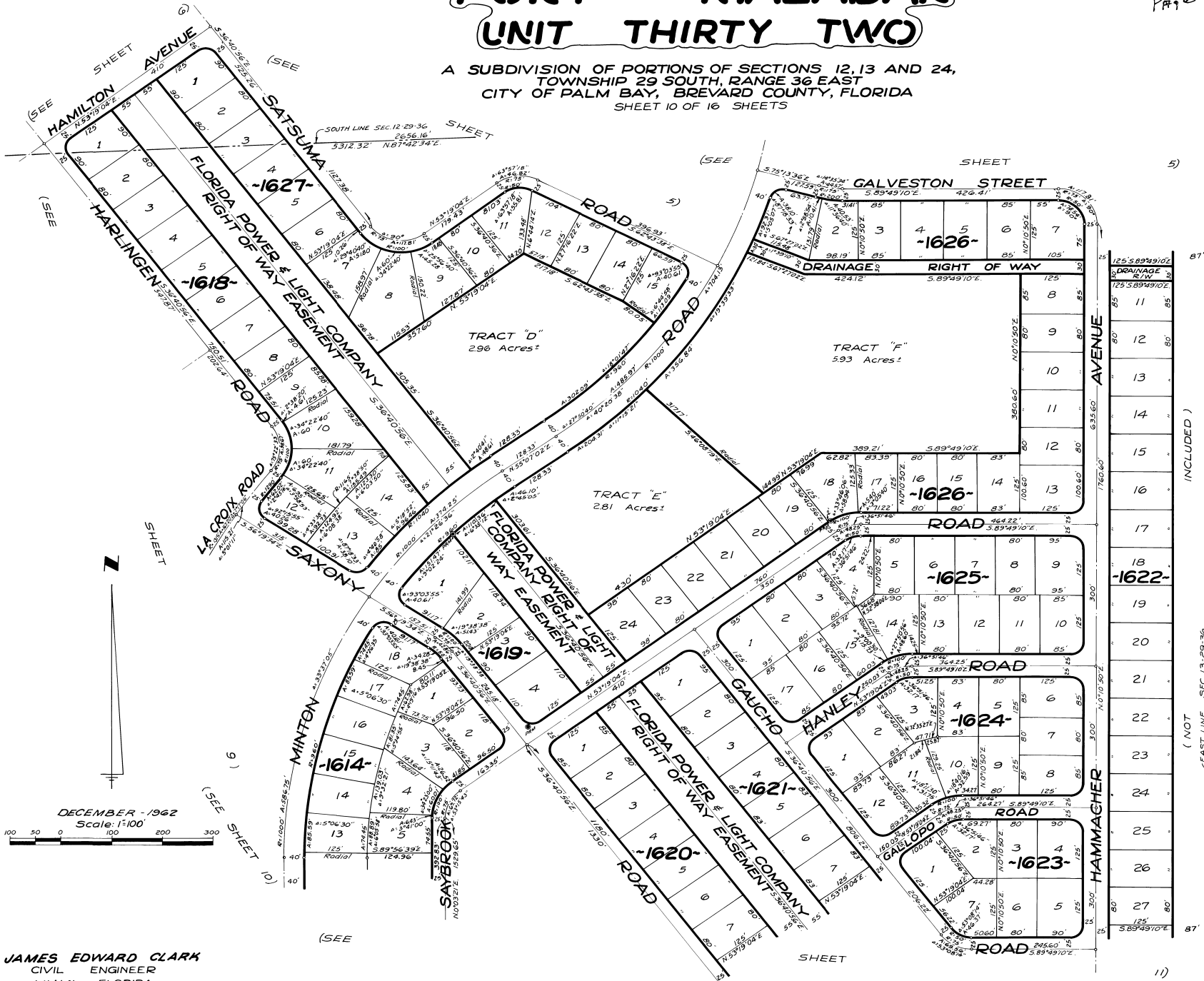


# PORT MALABAR UNIT THIRTY TWO

PLAT BOOK 17  
Page 43

A SUBDIVISION OF PORTIONS OF SECTIONS 12, 13 AND 24,  
TOWNSHIP 29 SOUTH, RANGE 36 EAST  
CITY OF PALM BAY, BREVARD COUNTY, FLORIDA  
SHEET 10 OF 16 SHEETS



DECEMBER - 1962  
Scale: 1"=100'

CALCULATED BY: RGS  
DRAWN BY: CJT  
CHECKED BY: JB  
APPROVED BY:

**JAMES EDWARD CLARK**  
CIVIL ENGINEER  
MIAMI - FLORIDA

( NOT INCLUDED )  
EAST LINE SEC 13-29-36  
MELBOURNE / TILLMAN DRAINAGE DISTRICT - 2715.25' CANAL - NB-37  
570'0.50' W. 331998'  
FLORIDA RIVER LAND COMPANY, INC. P.O. BOX 165