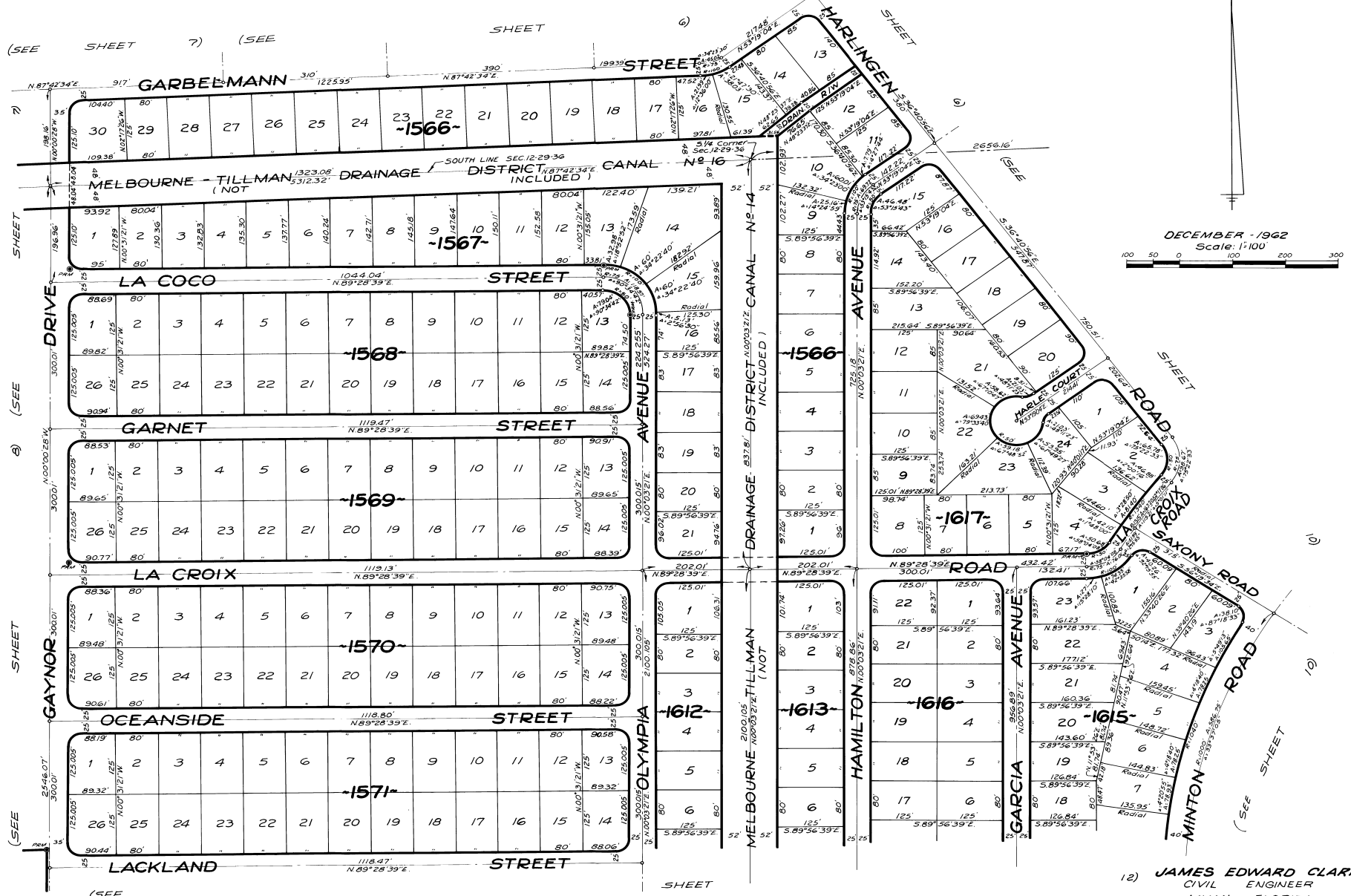


PORT MALABAR UNIT THIRTY TWO

PLAT Book 17
Page 42

A SUBDIVISION OF PORTIONS OF SECTIONS 12, 13 AND 24,
TOWNSHIP 29 SOUTH, RANGE 36 EAST
CITY OF PALM BAY, BREVARD COUNTY, FLORIDA
SHEET 9 OF 16 SHEETS



DECEMBER 1962
Scale: 1"=100'

CALCULATED BY- JEB
DRAWN BY- JEB
CHECKED BY- JEB
APPROVED BY-

12) JAMES EDWARD CLARK
CIVIL ENGINEER
MIAMI FLORIDA