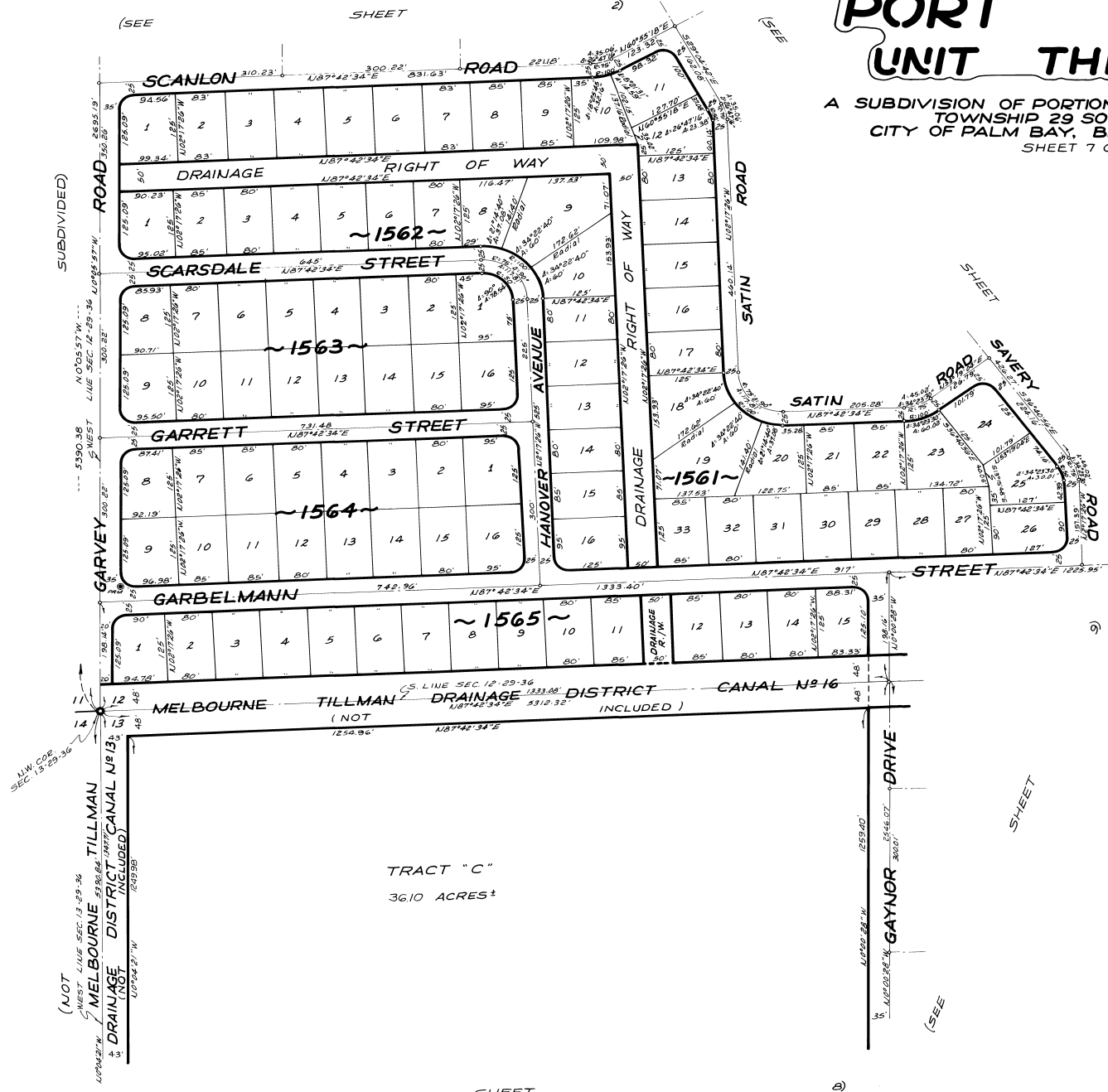


# PORT MALABAR UNIT THIRTY TWO

A SUBDIVISION OF PORTIONS OF SECTIONS 12, 13 AND 24,  
TOWNSHIP 29 SOUTH, RANGE 36 EAST  
CITY OF PALM BAY, BREVARD COUNTY, FLORIDA  
SHEET 7 OF 16 SHEETS

PLAT BOOK 17  
Page 40



TRACT "C"  
36.10 ACRES ±

DECEMBER - 1962  
Scale: 1"=100'  
100 50 0 100 200 300

CALCULATED BY - *AKK*  
DRAWN BY - *ECG*  
CHECKED BY - *JB*  
APPROVED BY -

JAMES EDWARD CLARK  
CIVIL ENGINEER  
MIAMI - FLORIDA

SHEET 7 OF 16 SHEETS  
36 LOTS THIS SHEET