

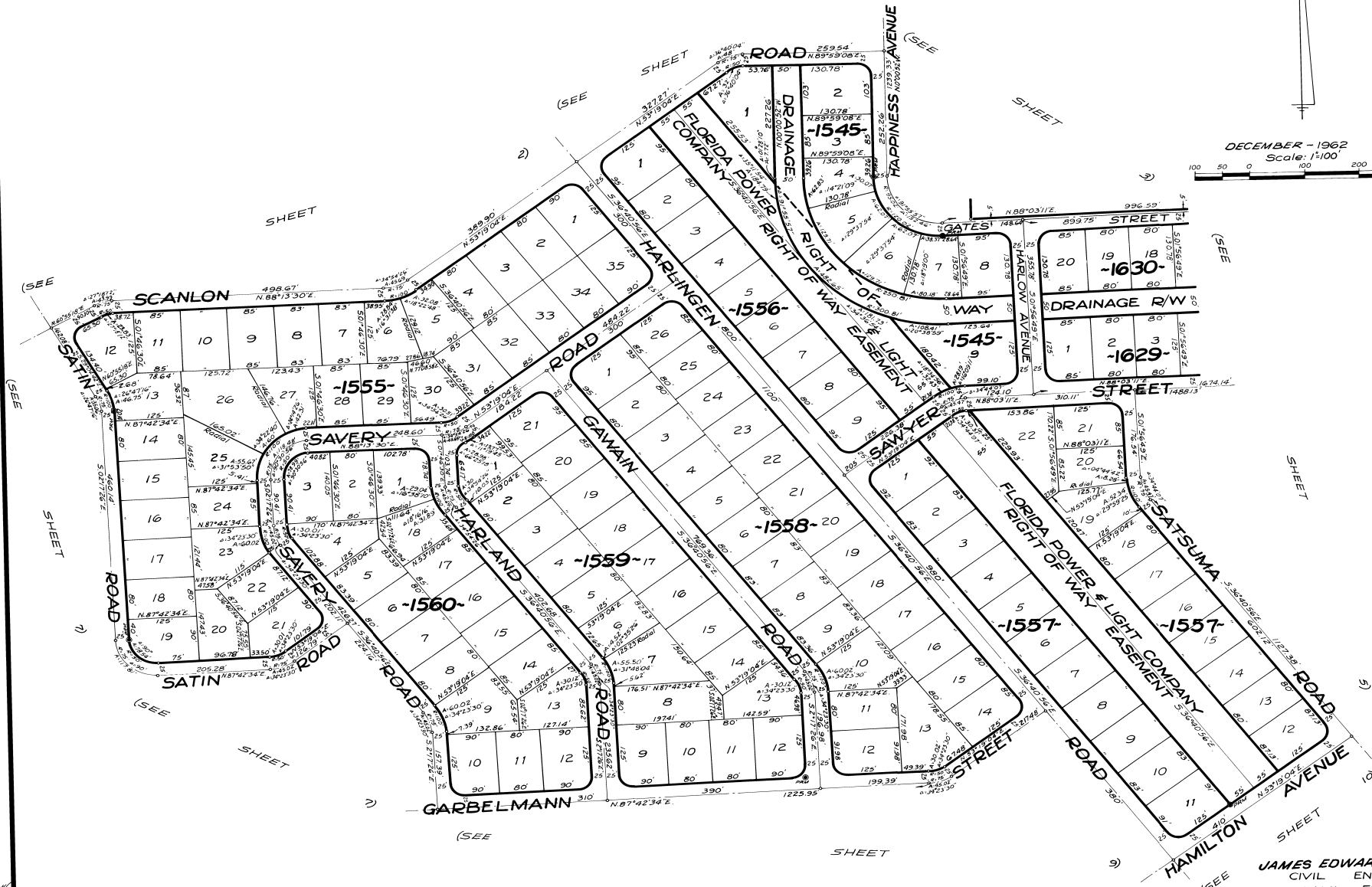
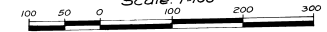
PORT MALABAR UNIT THIRTY TWO

A SUBDIVISION OF PORTIONS OF SECTIONS 12, 13 AND 24,
TOWNSHIP 29 SOUTH, RANGE 36 EAST
CITY OF PALM BAY, BREVARD COUNTY, FLORIDA
SHEET 6 OF 16 SHEETS

PLAT Book 17
Page 39



DECEMBER - 1962
Scale: 1"=100'



CALCULATED BY - *AKK*
DRAWN BY - *ELZ*
CHECKED BY - *JB*
APPROVED BY -

JAMES EDWARD CLARK
CIVIL ENGINEER
MIAMI - FLORIDA

SHEET 6 OF 16 SHEETS
146 LOTS THIS SHEET