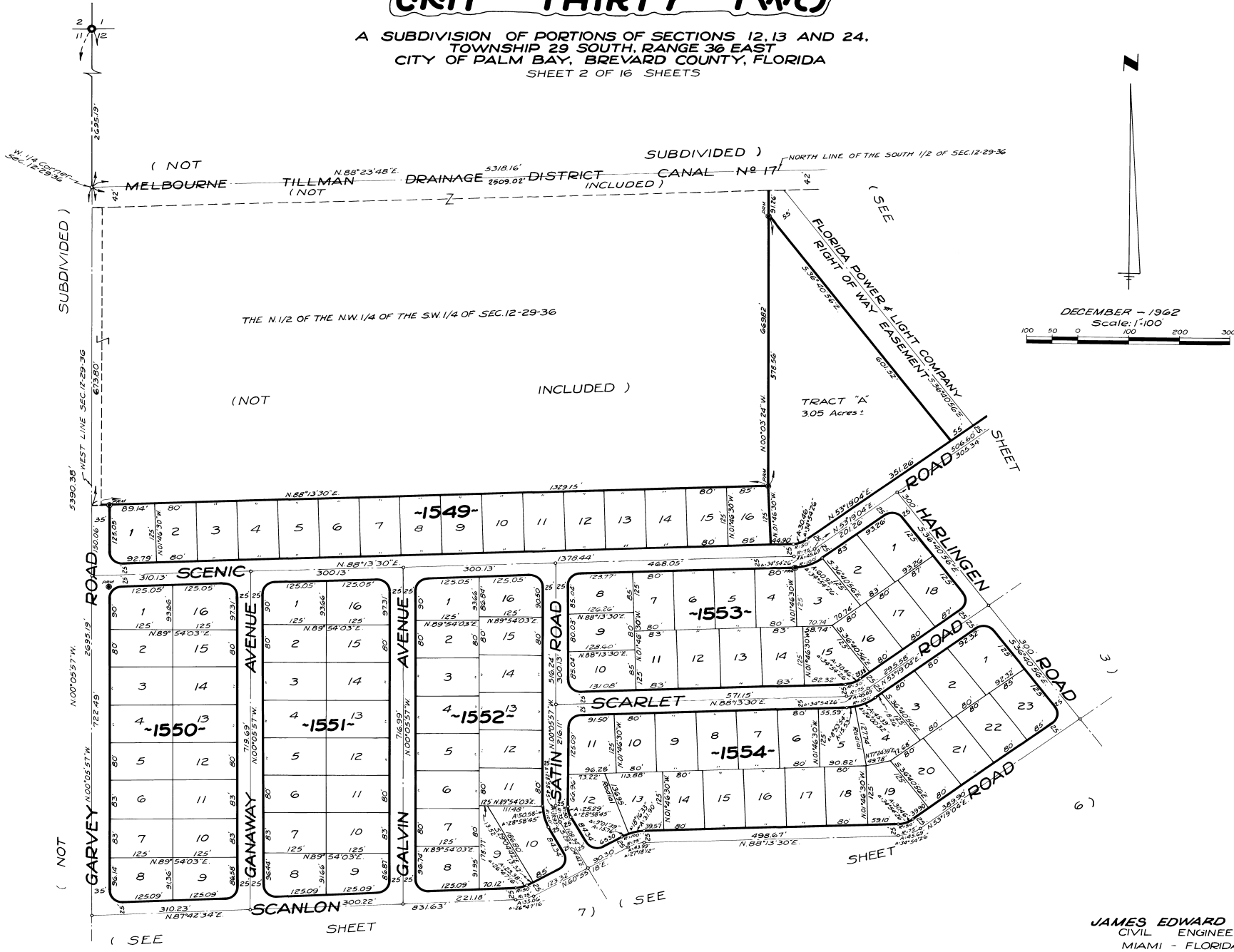


PORT MALABAR UNIT THIRTY TWO

PLAT Book 17
Page 35

A SUBDIVISION OF PORTIONS OF SECTIONS 12, 13 AND 24,
TOWNSHIP 29 SOUTH, RANGE 36 EAST
CITY OF PALM BAY, BREVARD COUNTY, FLORIDA
SHEET 2 OF 16 SHEETS



CALCULATED BY: [Signature]
DRAWN BY: [Signature]
CHECKED BY: [Signature]
APPROVED BY: [Signature]

JAMES EDWARD CLARK
CIVIL ENGINEER
MIAMI - FLORIDA

SHEET 2 OF 16 SHEETS
105 LOTS THIS SHEET