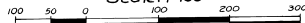


PORT MALABAR UNIT THIRTY ONE

PLAT BOOK 17
Page 26

A SUBDIVISION OF PORTIONS OF SECTIONS 24, 25 AND 26,
TOWNSHIP 29 SOUTH, RANGE 36 EAST
CITY OF PALM BAY, BREVARD COUNTY, FLORIDA
SHEET 5 OF 12 SHEETS
DECEMBER 1962
Scale: 1"=100'

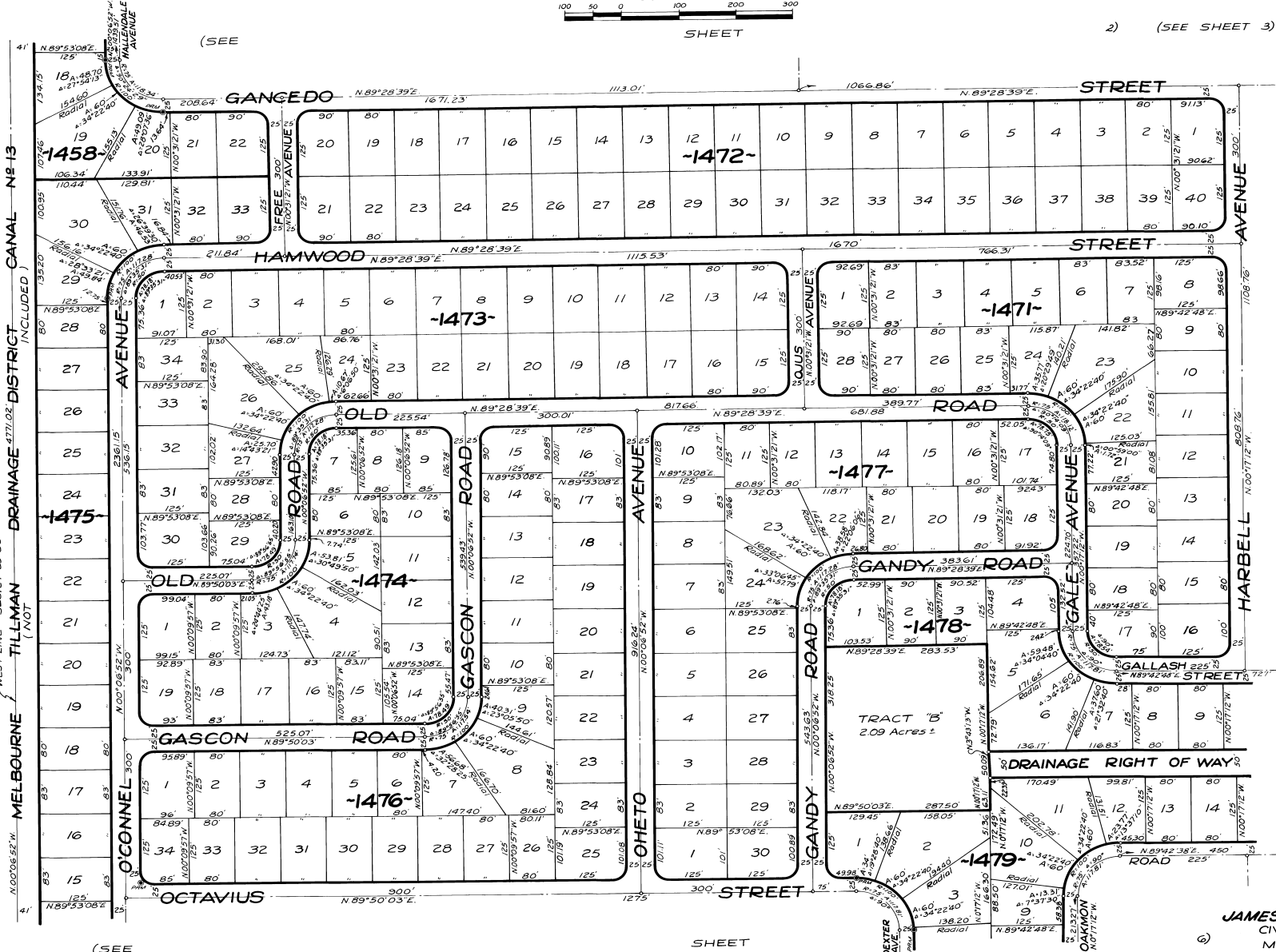


SHEET

2) (SEE SHEET 3)



SUBDIVIDED)



(NOT

CALCULATED BY: *Red*
DRAWN BY: *Red*
CHECKED BY: *JB*
APPROVED BY: *Red*

(SEE

SHEET

(SEE

JAMES EDWARD CLARK
CIVIL ENGINEER
MIAMI - FLORIDA