

PORT MALABAR UNIT THIRTY ONE

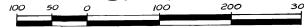
PLAT BOOK 17
Page 23

A SUBDIVISION OF PORTIONS OF SECTIONS 24, 25 AND 26,
TOWNSHIP 29 SOUTH, RANGE 36 EAST
CITY OF PALM BAY, BREVARD COUNTY, FLORIDA

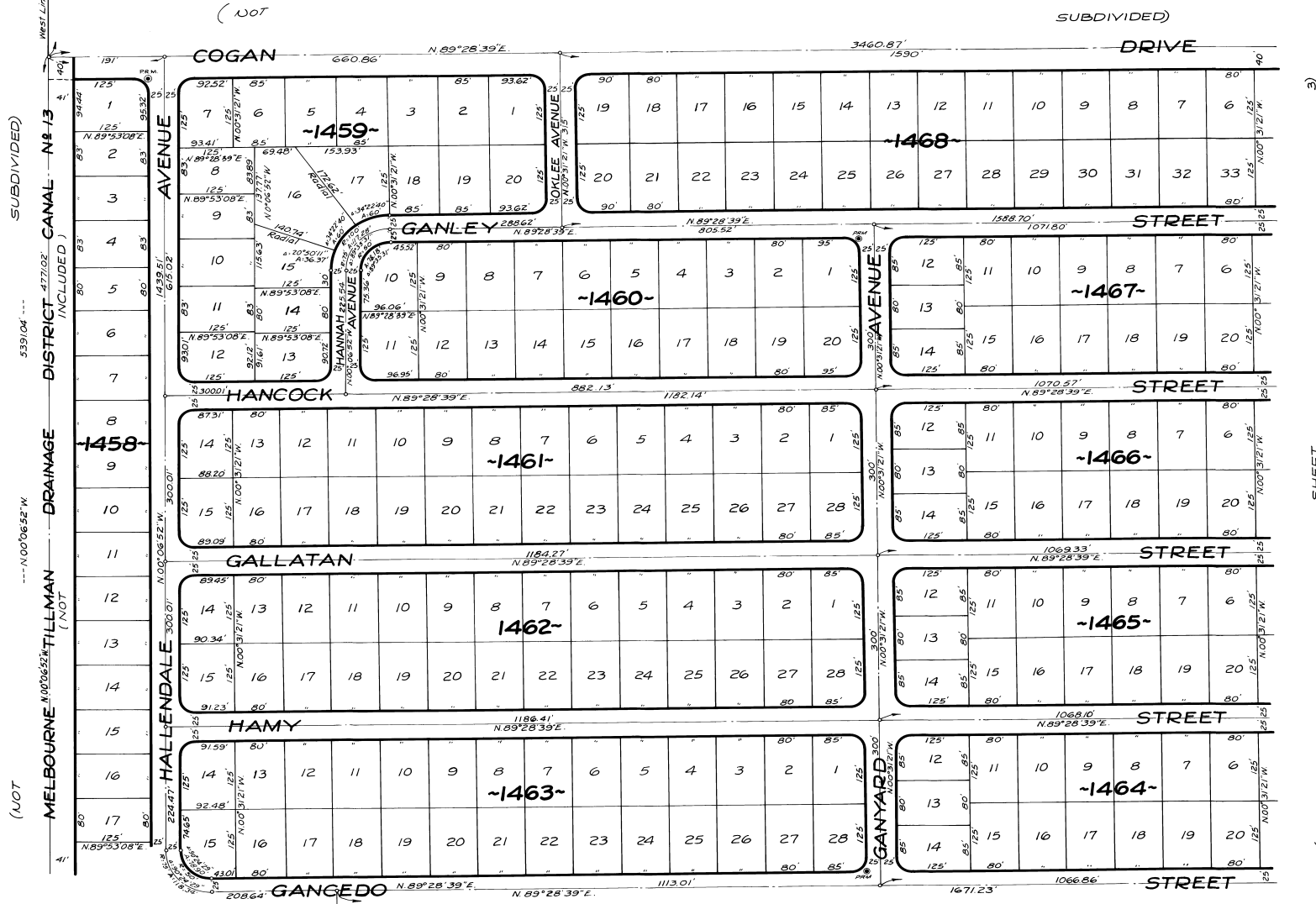
SHEET 2 OF 12 SHEETS

DECEMBER - 1962

Scale: 1"=100'



N



(NOT SUBDIVIDED)

(NOT SUBDIVIDED)

(NOT SUBDIVIDED)

(NOT SUBDIVIDED)

(SEE

SHEET

)

3)

SHEET

(SEE

CALCULATED BY: *Alk*
DRAWN BY: *JB*
CHECKED BY: *JB*
APPROVED BY: *JB*

JAMES EDWARD CLARK
CIVIL ENGINEER
MIAMI - FLORIDA

SHEET 2 OF 12 SHEETS
229 LOTS THIS SHEET