

PORT MALABAR UNIT THIRTY

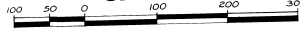
PLAT BOOK 27
19
Page

A SUBDIVISION OF A PORTION OF SECTION 25 AND 26,
ALL OF SECTION 36, TOWNSHIP 29 SOUTH, RANGE 36 EAST
CITY OF PALM BAY, BREVARD COUNTY, FLORIDA

SHEET 14 OF 16 SHEETS

DECEMBER - 1962

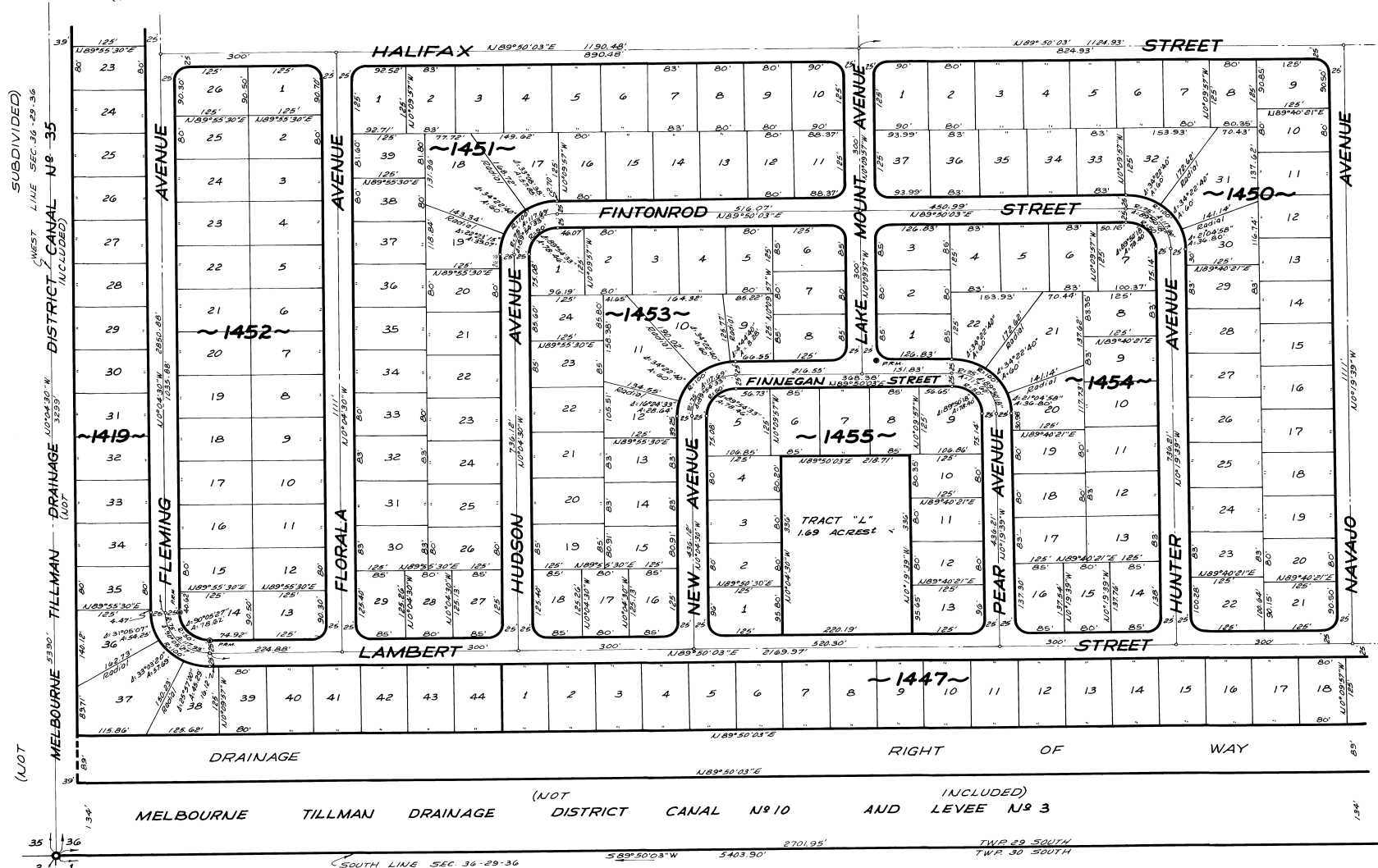
Scale: 1"=100'



SHEET

13)

(SEE



(5)

SHEET

(SEE

CALCULATED BY: B.C.
DRAWN BY: R.C.G.
CHECKED BY: J.B.
APPROVED BY: J.M.

SW COR. SEC. 36-29-36
134'

SOUTH LINE SEC. 36-29-36 58°50'03"W 5403.90' 2701.95' TWP. 29 SOUTH TWP. 30 SOUTH

JAMES EDWARD CLARK
CIVIL ENGINEER
MIAMI - FLORIDA

SHEET 14 OF 16 SHEETS
201 LOTS THIS SHEET