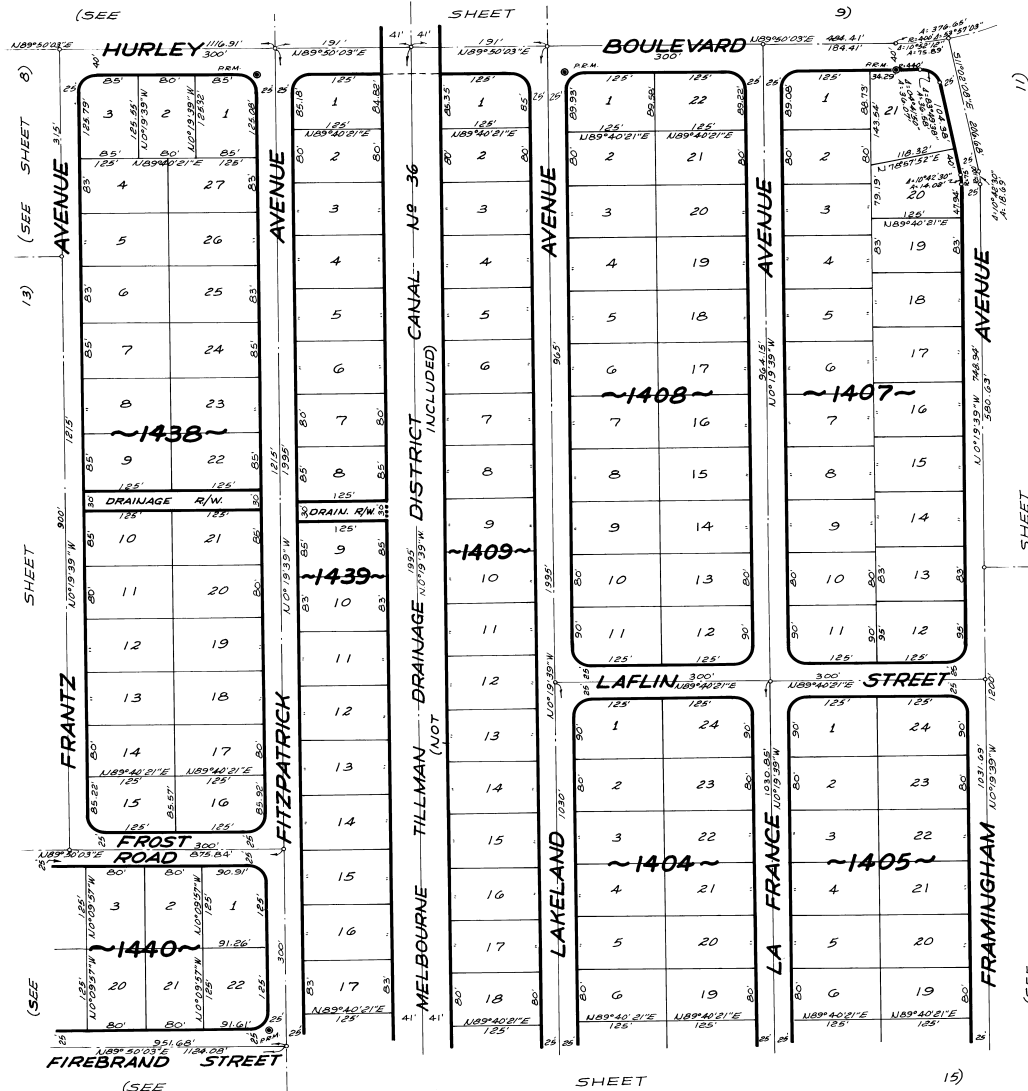


# PORT MALABAR UNIT THIRTY

PLAT BOOK 17  
Page 17

A SUBDIVISION OF A PORTION OF SECTION 25 AND 26,  
ALL OF SECTION 36, TOWNSHIP 29 SOUTH, RANGE 36 EAST  
CITY OF PALM BAY, BREVARD COUNTY, FLORIDA  
SHEET 12 OF 16 SHEETS



DECEMBER-1962  
Scale: 1"=100'

CALCULATED BY: *[Signature]*  
DRAWN BY: R.C.G.  
CHECKED BY: J.B.  
APPROVED BY: *[Signature]*

JAMES EDWARD CLARK  
CIVIL ENGINEER  
MIAMI - FLORIDA

SHEET 12 OF 16 SHEETS  
135 LOTS THIS SHEET