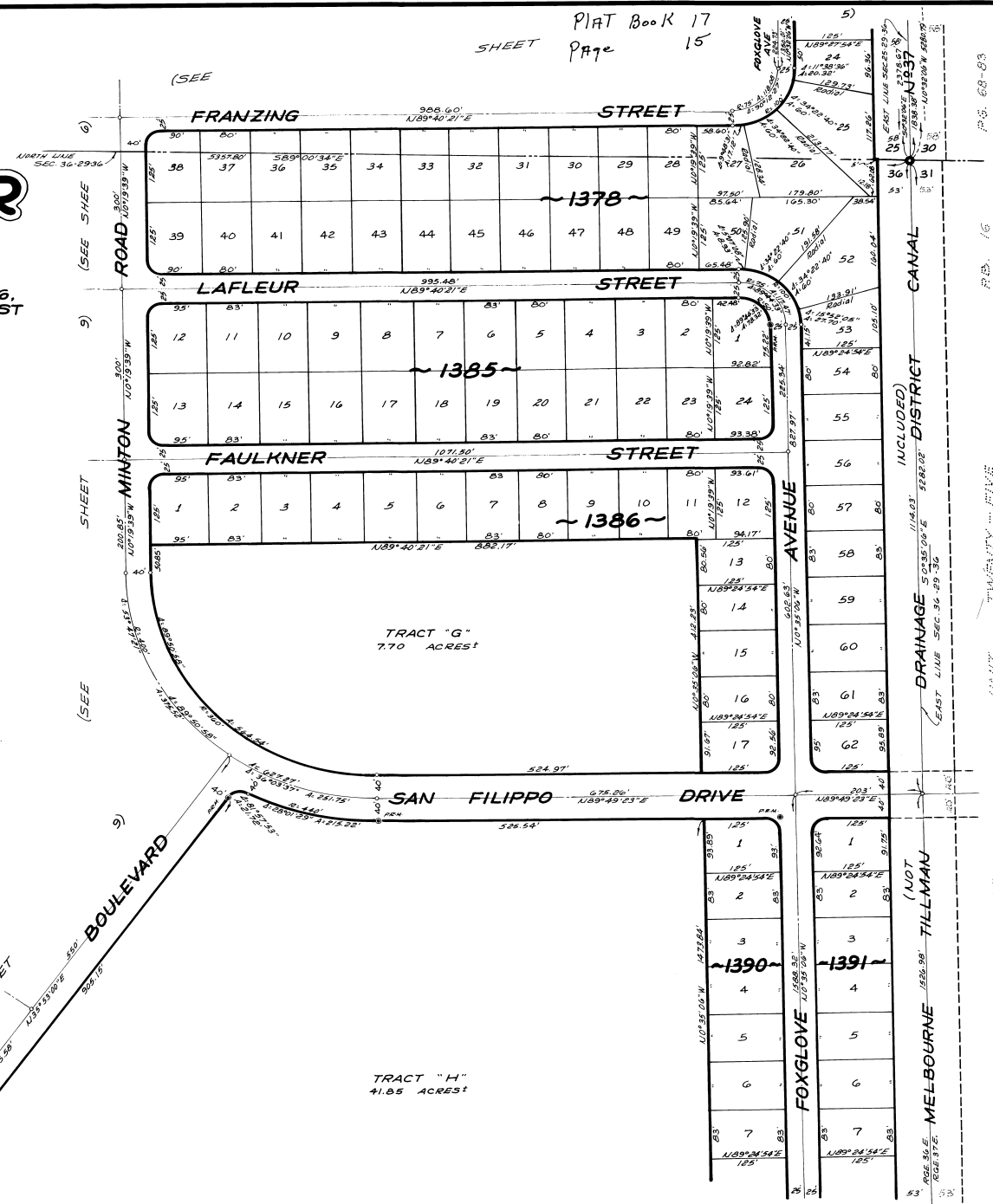
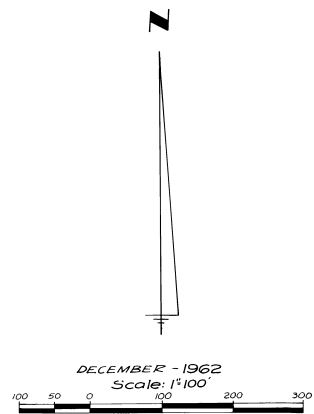


PORT MALABAR UNIT THIRTY

A SUBDIVISION OF A PORTION OF SECTION 25 AND 26,
ALL OF SECTION 36, TOWNSHIP 29 SOUTH, RANGE 36 EAST
CITY OF PALM BAY, BREVARD COUNTY, FLORIDA
SHEET 10 OF 16 SHEETS



JAMES EDWARD CLARK
CIVIL ENGINEER
MIAMI - FLORIDA

CALCULATED BY - JEC
DRAWN BY - JEC
CHECKED BY - JEC
APPROVED BY - JEC