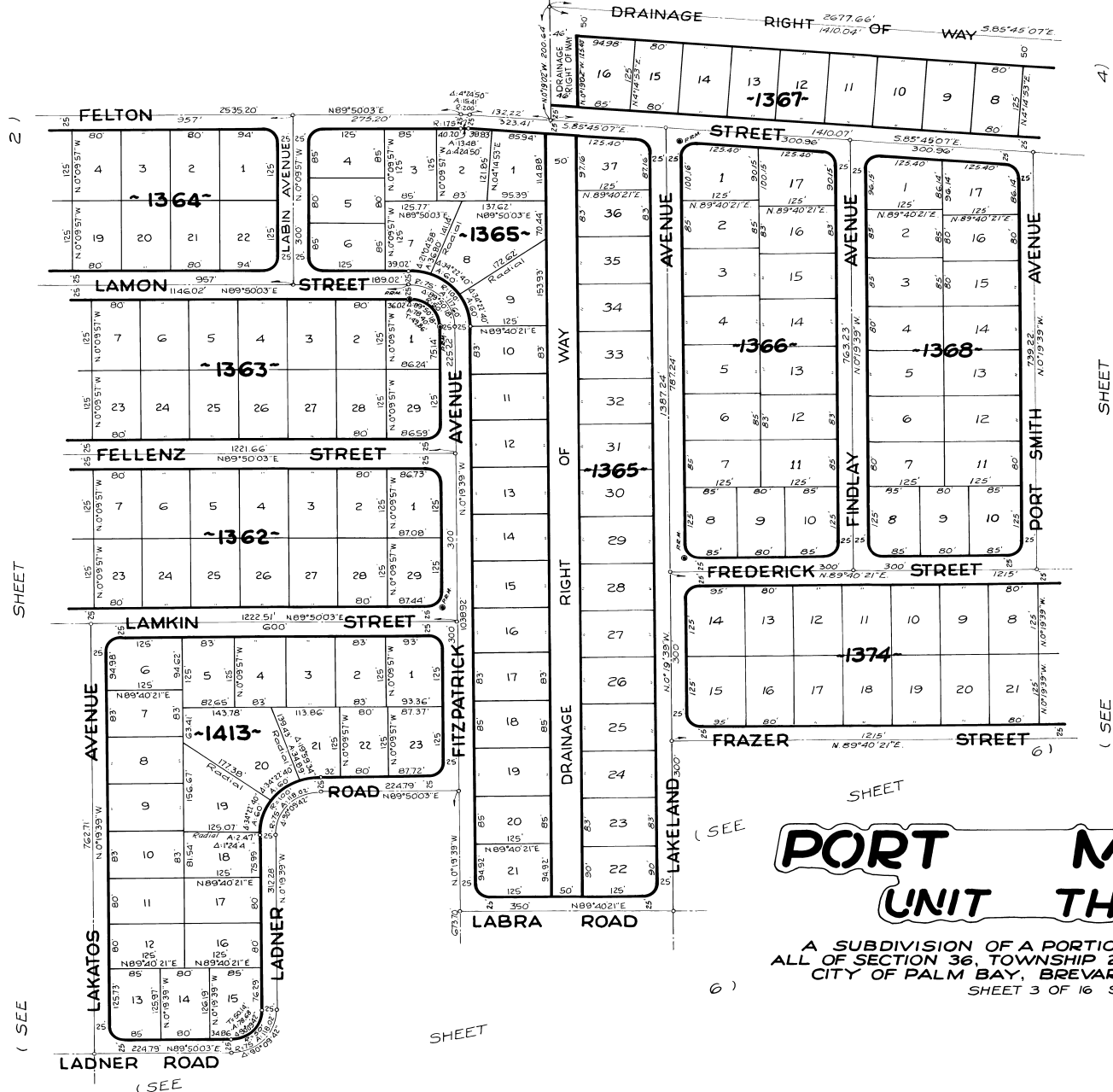


(NOT

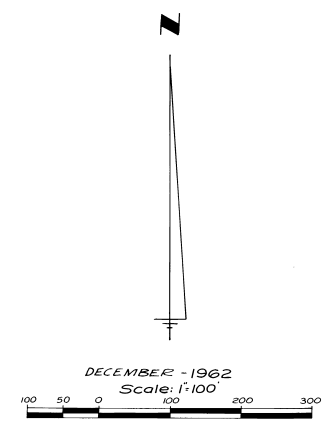
SUBDIVIDED)



4)

SHEET

(SEE



PORT MALABAR UNIT THIRTY

A SUBDIVISION OF A PORTION OF SECTION 25 AND 26,
ALL OF SECTION 36, TOWNSHIP 29 SOUTH, RANGE 36 EAST
CITY OF PALM BAY, BREVARD COUNTY, FLORIDA
SHEET 3 OF 16 SHEETS

JAMES EDWARD CLARK
CIVIL ENGINEER
MIAMI - FLORIDA

SHEET 3 OF 16 SHEETS
153 LOTS THIS SHEET

CALCULATED BY - JEB
DRAWN BY - JEB
CHECKED BY - JEB
APPROVED BY - JEB

2)

SHEET

(SEE

SHEET

(SEE

6)