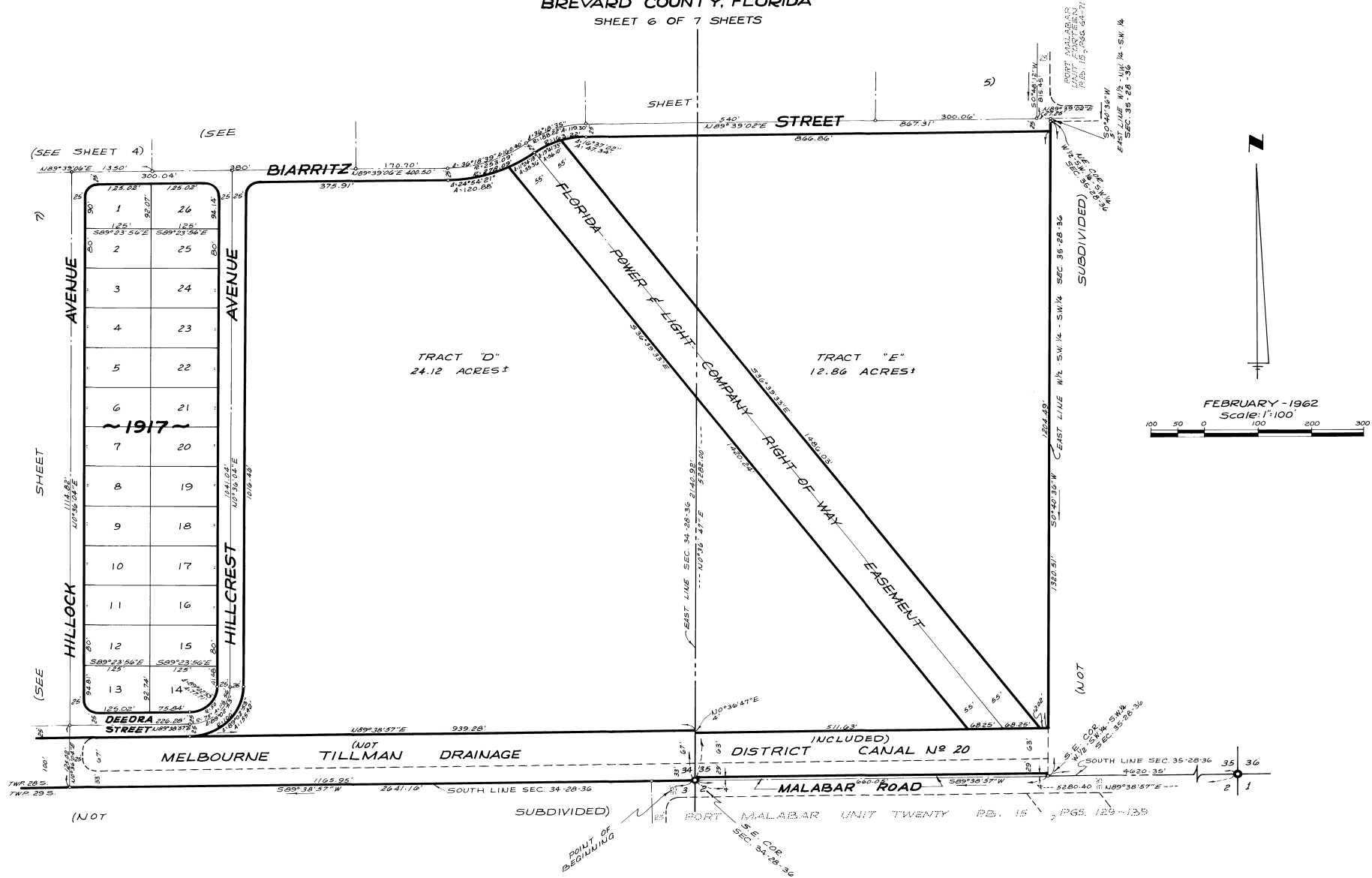


PORT MALABAR UNIT TWENTY SIX

PLAT BOOK 16
PAGE 89

A SUBDIVISION OF PORTIONS OF SECTIONS
34 AND 35, TOWNSHIP 28 SOUTH, RANGE 36 EAST
CITY OF PALM BAY
BREVARD COUNTY, FLORIDA

SHEET 6 OF 7 SHEETS



(SEE SHEET 4)

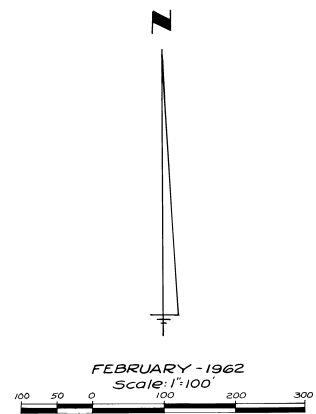
HILLOCK AVENUE	1	26
	2	25
	3	24
	4	23
	5	22
	6	21
	7	20
	8	19
	9	18
	10	17
	11	16
	12	15
	13	14

~ 1917 ~

HILLCREST AVENUE

TRACT "D"
24.12 ACRES ±

TRACT "E"
12.86 ACRES ±



CALCULATED BY - *[Signature]*
DRAWN BY - R.C.G.
CHECKED BY - J.B.
APPROVED BY - C.M.

ARTHUR L. DAY
CIVIL ENGINEER
MIAMI - FLORIDA

SHEET 6 OF 7 SHEETS
26 LOTS THIS SHEET