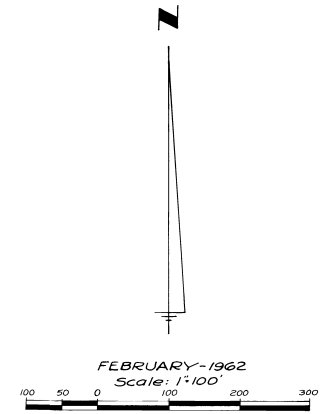
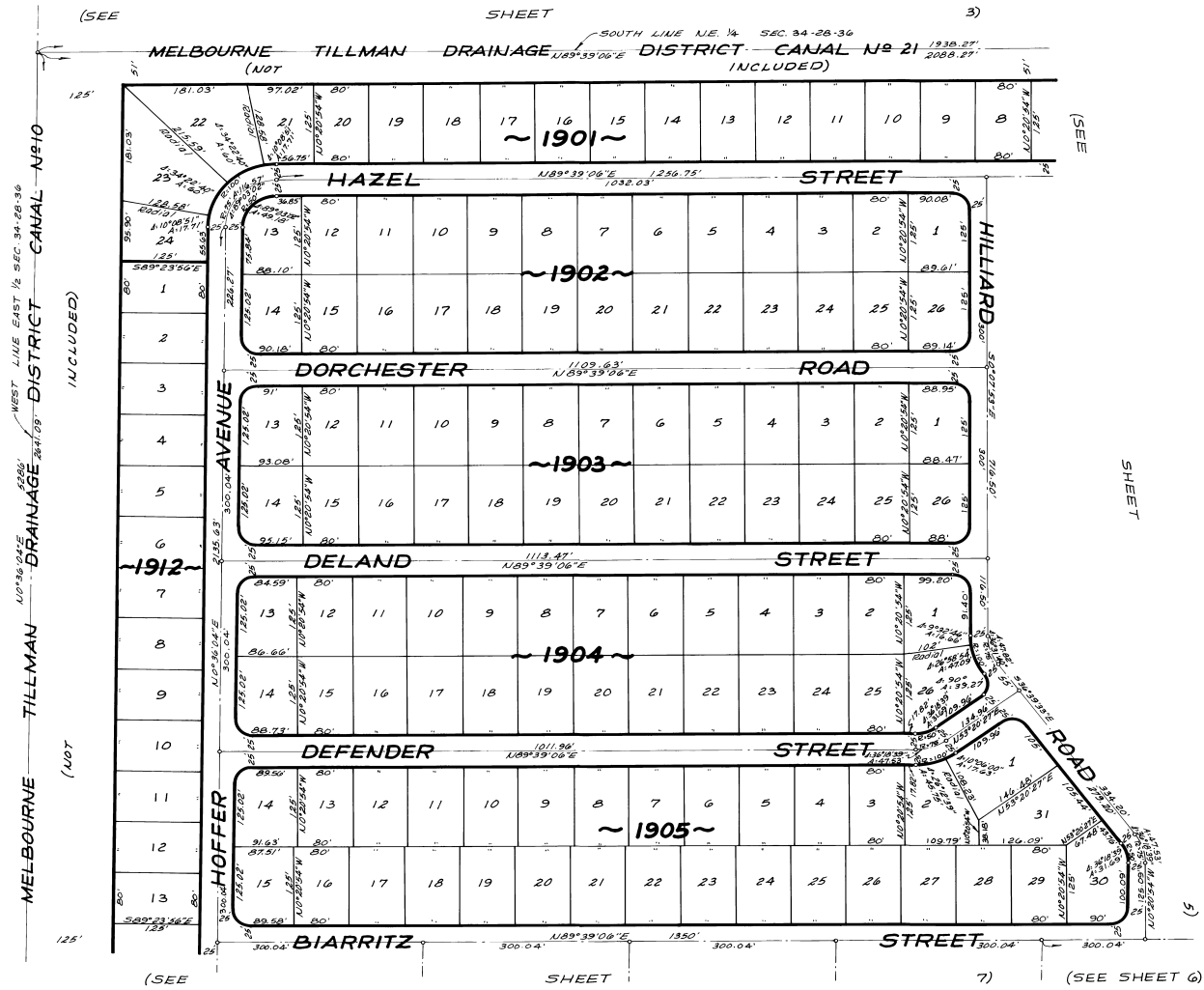


# PORT MALABAR UNIT TWENTY SIX

A SUBDIVISION OF PORTIONS OF SECTIONS  
 34 AND 35, TOWNSHIP 28 SOUTH, RANGE 36 EAST  
 CITY OF PALM BAY  
 BREVARD COUNTY, FLORIDA  
 SHEET 4 OF 7 SHEETS



CALCULATED BY-  
 DRAWN BY- R.C.G.  
 CHECKED BY- J.B.  
 APPROVED BY- C.G.H.

ARTHUR L. DAY  
 CIVIL ENGINEER  
 MIAMI - FLORIDA

SHEET 4 OF 7 SHEETS  
 133 LOTS THIS SHEET