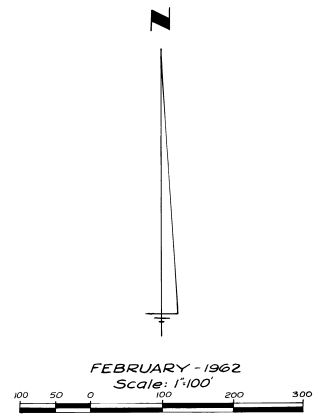
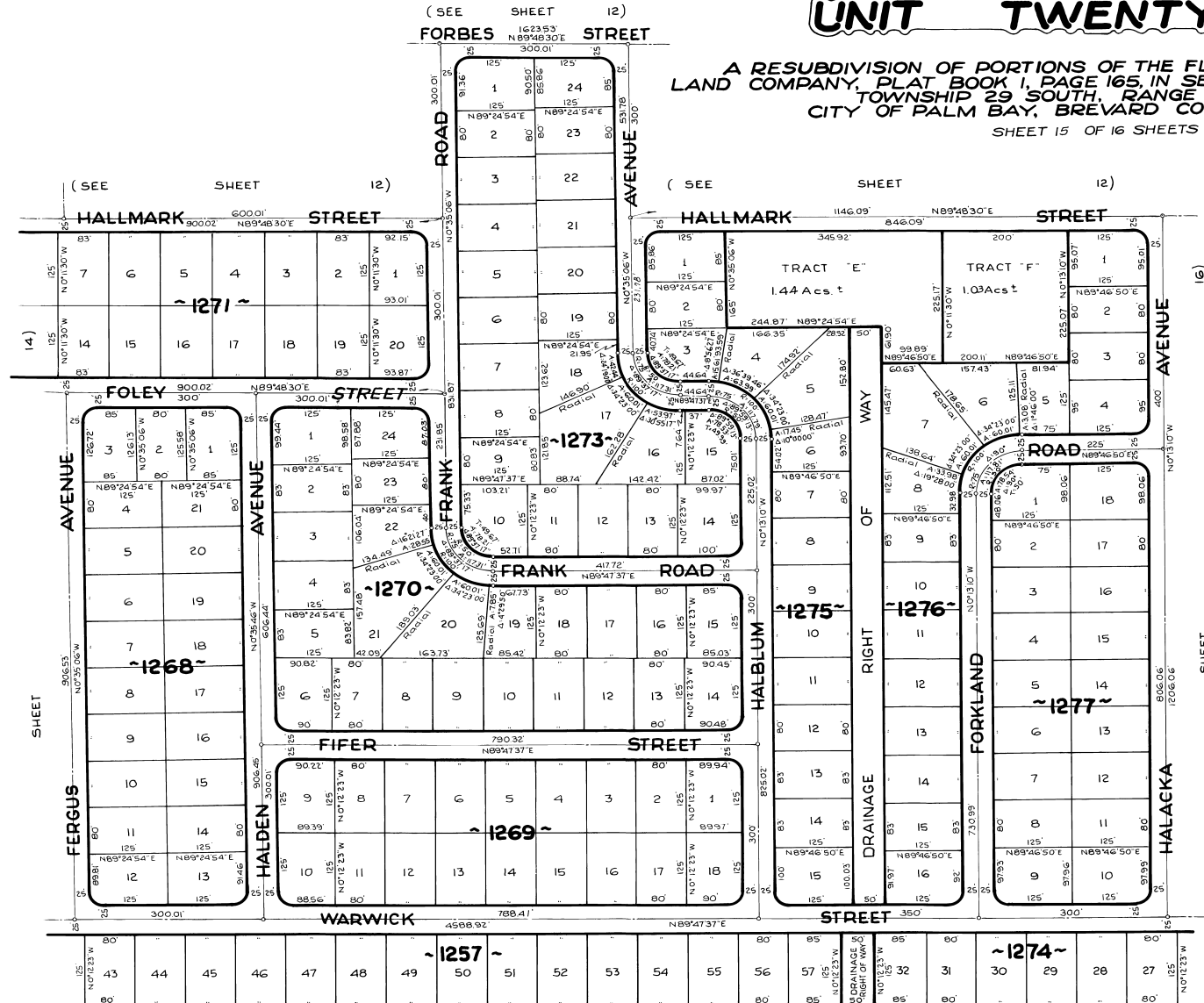


# PORT MALABAR UNIT TWENTY FIVE

A RESUBDIVISION OF PORTIONS OF THE FLORIDA INDIAN RIVER  
LAND COMPANY, PLAT BOOK 1, PAGE 165, IN SECTIONS 29, 30, 31 AND 32,  
TOWNSHIP 29 SOUTH, RANGE 37 EAST,  
CITY OF PALM BAY, BREVARD COUNTY, FLORIDA  
SHEET 15 OF 16 SHEETS

PLAT BOOK 16  
PAGE 82



( SEE SHEET 12 )  
DRAINAGE RIGHT OF WAY  
( NOT INCLUDED )  
MELBOURNE - TILLMAN DRAINAGE DISTRICT CANAL NO. 38  
SOUTH LINE SEC. 31 29 37 522732 5094737 W

CALCULATED BY - JCC  
DRAWN BY - JMC  
CHECKED BY - JCB  
APPROVED BY - COX

ARTHUR L. DAY  
CIVIL ENGINEER  
MIAMI - FLORIDA