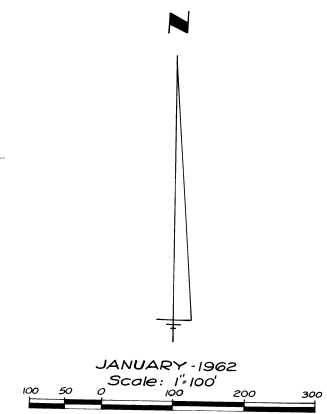
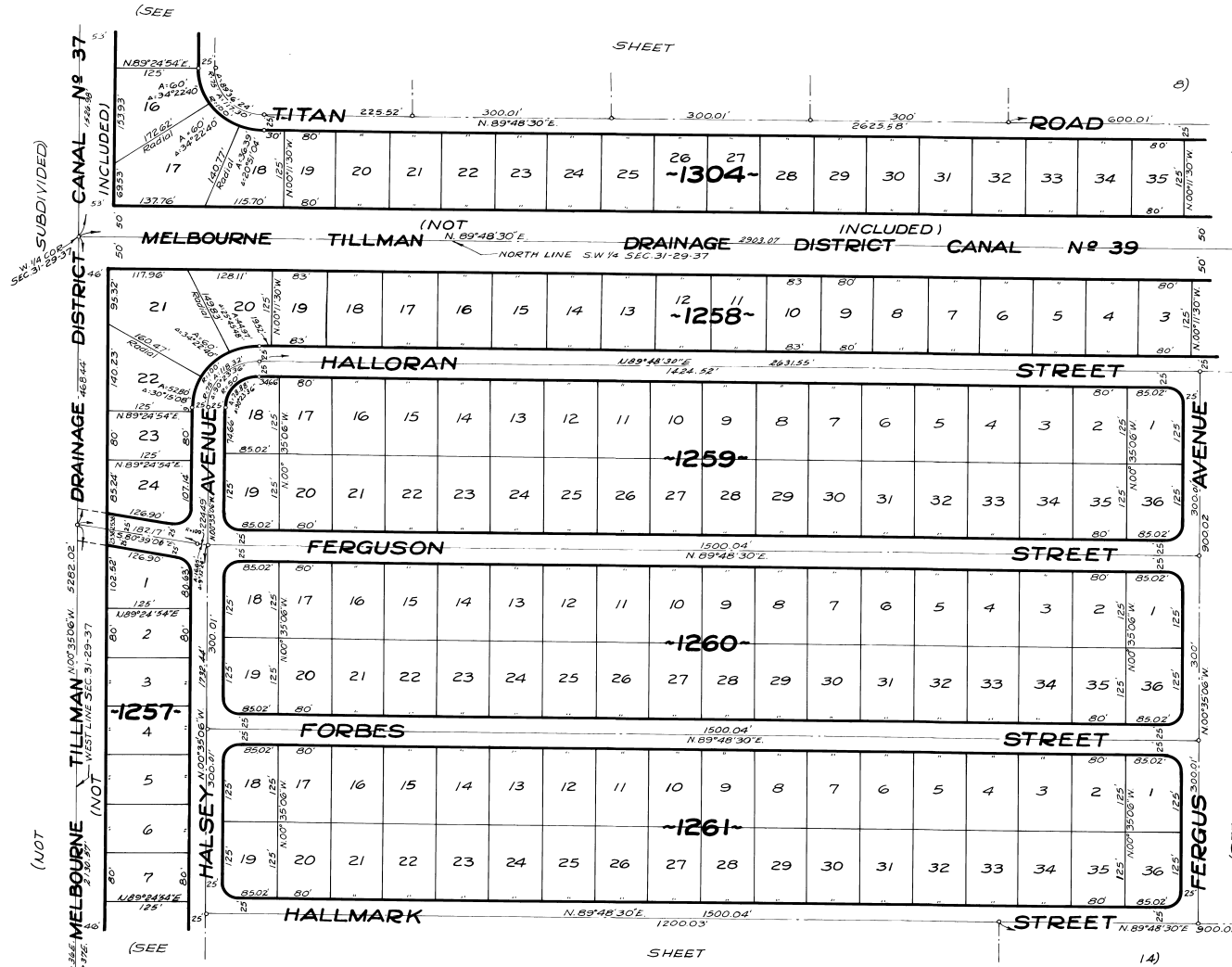


PORT MALABAR UNIT TWENTY FIVE

PLAT BOOK 16
PAGE 30

A RESUBDIVISION OF PORTIONS OF THE FLORIDA INDIAN RIVER
LAND COMPANY, PLAT BOOK 1, PAGE 165, IN SECTIONS 29, 30, 31 AND 32,
TOWNSHIP 29 SOUTH, RANGE 37 EAST
CITY OF PALM BAY, BREVARD COUNTY, FLORIDA

SHEET 13 OF 16 SHEETS



CALCULATED BY - P.H.C.
DRAWN BY - E.Z.
CHECKED BY - J.B.
APPROVED BY - G.H.K.

ARTHUR L. DAY
CIVIL ENGINEER
MIAMI - FLORIDA

SHEET 13 OF 16 SHEETS
157 LOTS THIS SHEET