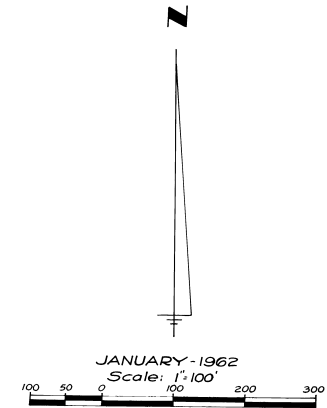
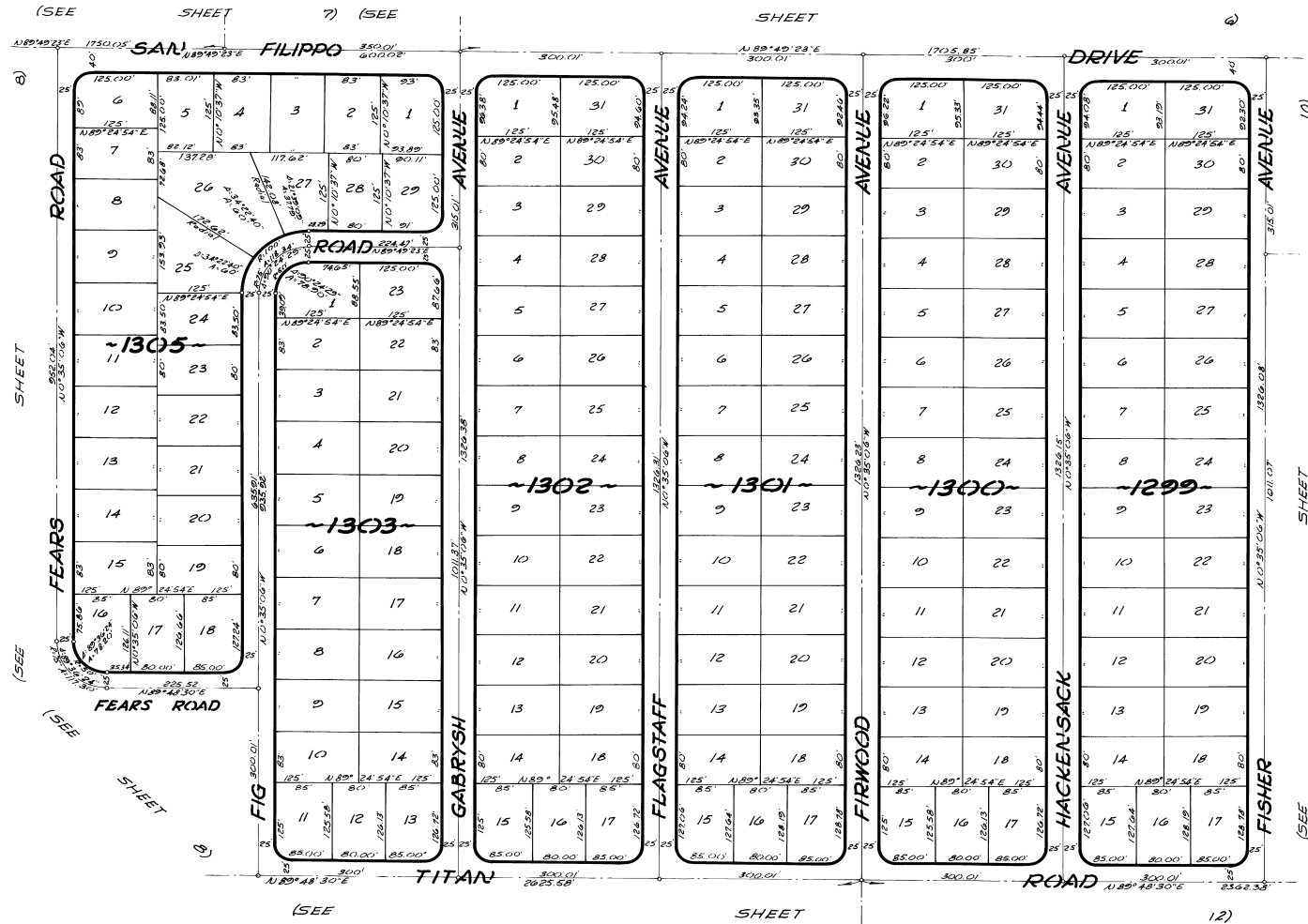


PORT MALABAR UNIT TWENTY FIVE

PLAT BOOK 16
PAGE 76

A RESUBDIVISION OF PORTIONS OF THE FLORIDA INDIAN RIVER
LAND COMPANY, PLAT BOOK 1, PAGE 165, IN SECTIONS 29, 30, 31 AND 32,
TOWNSHIP 29 SOUTH, RANGE 37 EAST
CITY OF PALM BAY, BREVARD COUNTY, FLORIDA

SHEET 9 OF 16 SHEETS



CALCULATED BY - *Ally*
DRAWN BY - J.R.W.
CHECKED BY - J.D.
APPROVED BY - C.G.K.

ARTHUR L. DAY
CIVIL ENGINEER
MIAMI - FLORIDA

SHEET 9 OF 16 SHEETS
176 LOTS THIS SHEET