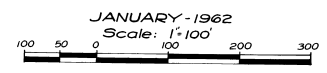
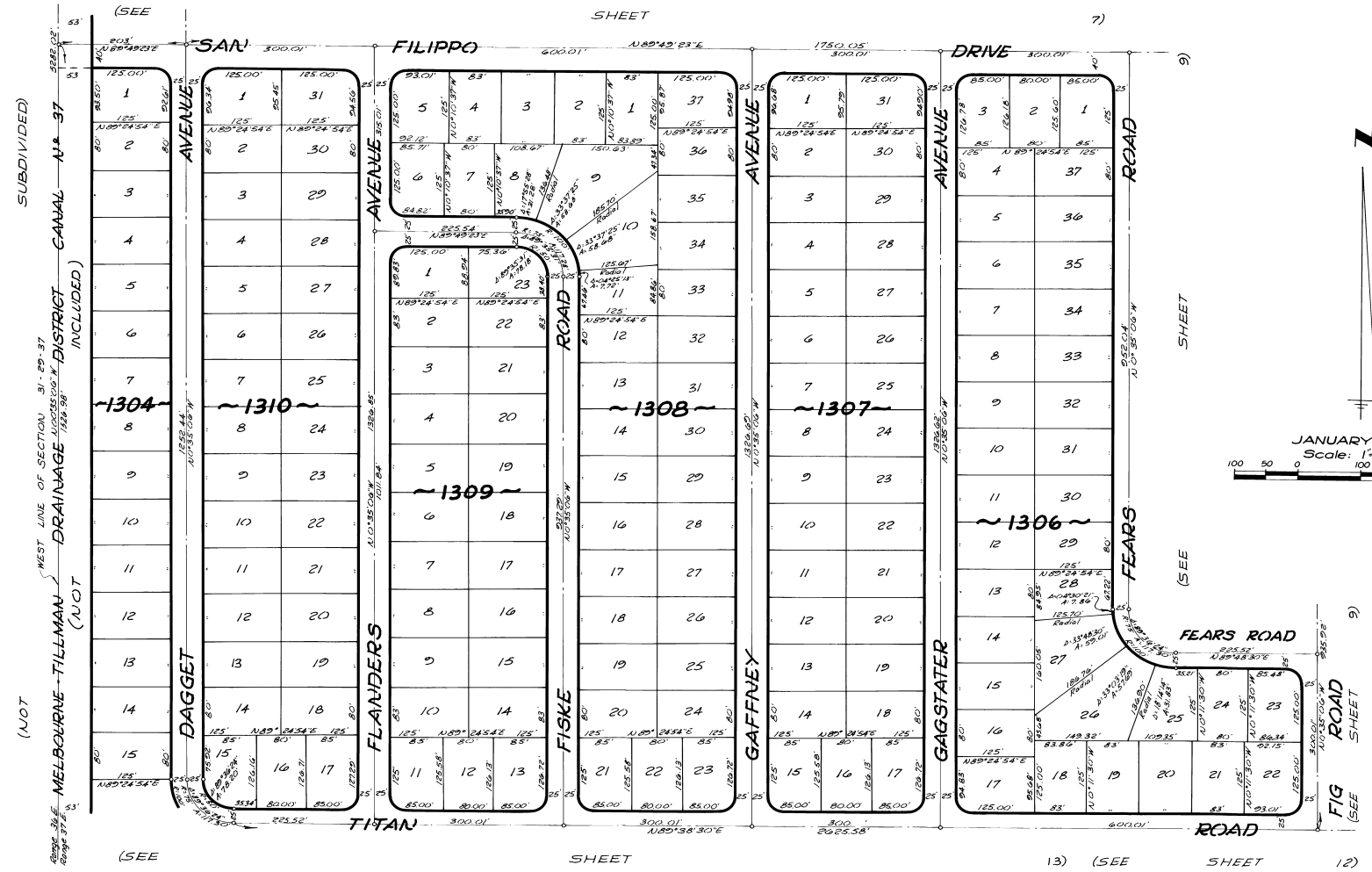


PORT MALABAR

UNIT TWENTY FIVE

PLAT BOOK 16
PAGE 75

A RESUBDIVISION OF PORTIONS OF THE FLORIDA INDIAN RIVER
LAND COMPANY, PLAT BOOK 1, PAGE 165, IN SECTIONS 29, 30, 31 AND 32,
TOWNSHIP 29 SOUTH, RANGE 37 EAST,
CITY OF PALM BAY, BREVARD COUNTY, FLORIDA
SHEET 8 OF 16 SHEETS



JANUARY - 1962

CALCULATED BY - AKK
DRAWN BY - URW
CHECKED BY - JB
APPROVED BY - CGK

ARTHUR L. DAY
CIVIL ENGINEER
MIAMI - FLORIDA

SHEET 8 OF 16 SHEETS
174 LOTS THIS SHEET