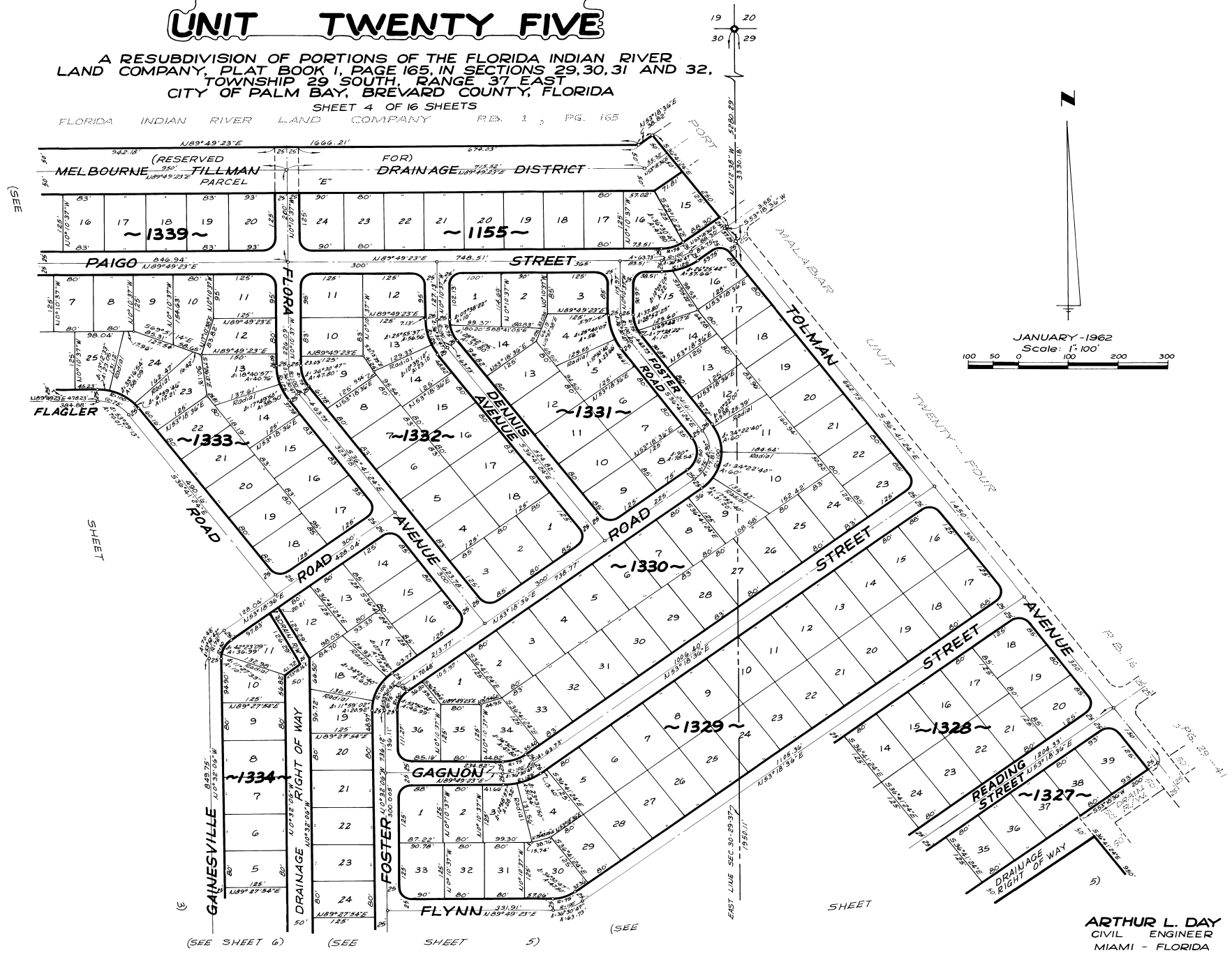


PORT MALABAR UNIT TWENTY FIVE

A RESUBDIVISION OF PORTIONS OF THE FLORIDA INDIAN RIVER
LAND COMPANY, PLAT BOOK 1, PAGE 165, IN SECTIONS 29, 30, 31 AND 32,
TOWNSHIP 29 SOUTH, RANGE 37 EAST
CITY OF PALM BAY, BREVARD COUNTY, FLORIDA

SHEET 4 OF 16 SHEETS
FLORIDA INDIAN RIVER LAND COMPANY P.B. 1, PG. 165



CALCULATED BY - R.C.
DRAWN BY - R.C.
CHECKED BY - J.S.
APPROVED BY - C.G.K.

ARTHUR L. DAY
CIVIL ENGINEER
MIAMI - FLORIDA

SHEET 4 OF 16 SHEETS
171 LOTS THIS SHEET