

PORT MALABAR UNIT TWENTY FIVE

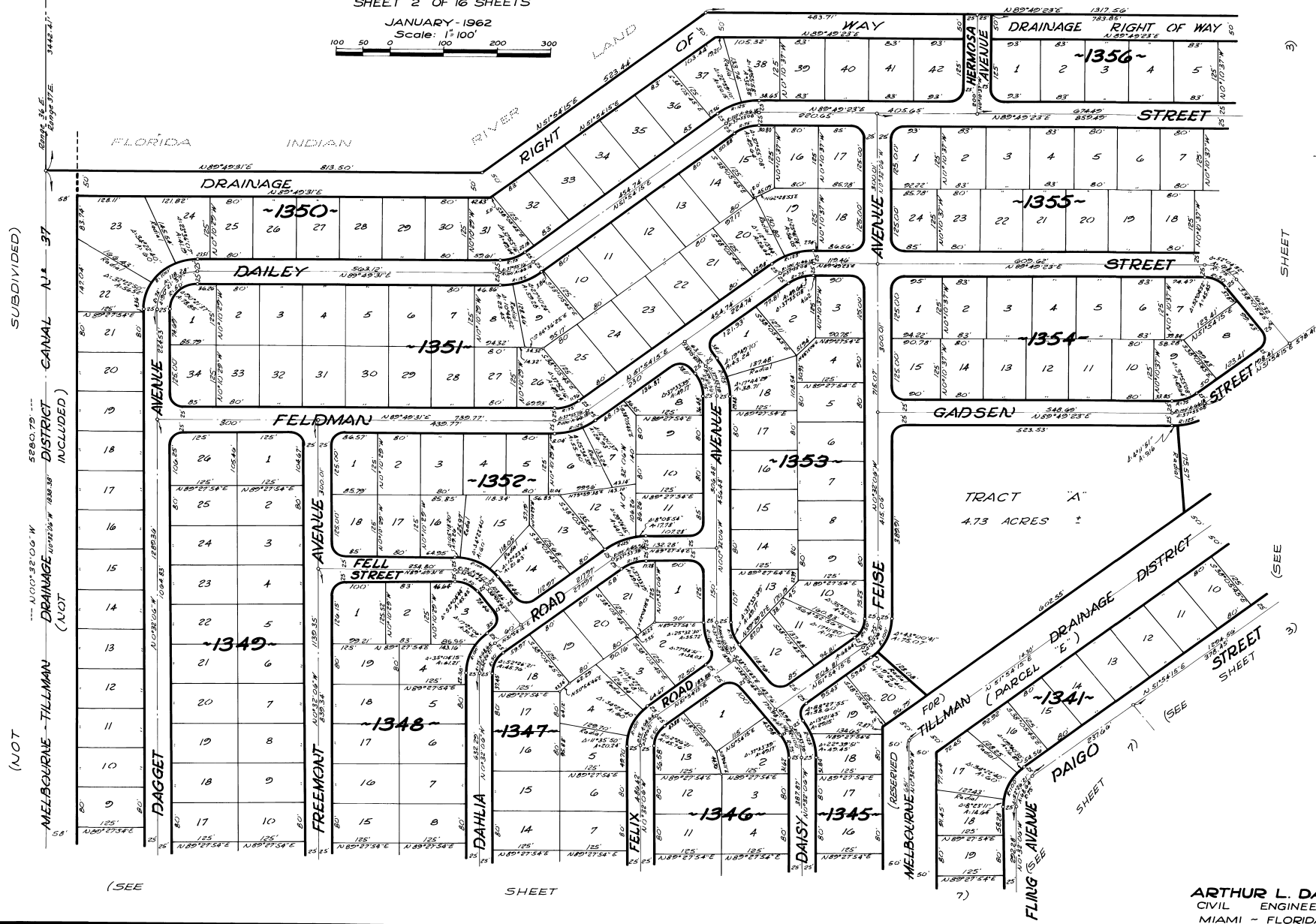
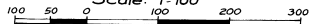
PLAT BOOK 16
PAGE 69

A RESUBDIVISION OF PORTIONS OF THE FLORIDA INDIAN RIVER
LAND COMPANY, PLAT BOOK 1, PAGE 165, IN SECTIONS 29, 30, 31 AND 32,
TOWNSHIP 29 SOUTH, RANGE 37 EAST
CITY OF PALM BAY, BREVARD COUNTY, FLORIDA

SHEET 2 OF 16 SHEETS

JANUARY - 1962

Scale: 1" = 100'



SUBDIVIDED)

MELBOURNE - TILLMAN DISTRICT (NOT INCLUDED)

CANAL N 37

(NOT

(SEE

SHEET

SHEET

(SEE

SHEET

CALCULATED BY - LGO
DRAWN BY - J.R.W.
CHECKED BY - J.B.
APPROVED BY - COK

ARTHUR L. DAY
CIVIL ENGINEER
MIAMI - FLORIDA

SHEET 2 OF 16 SHEETS
208 LOTS THIS SHEET