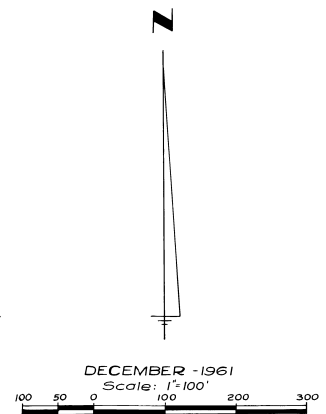
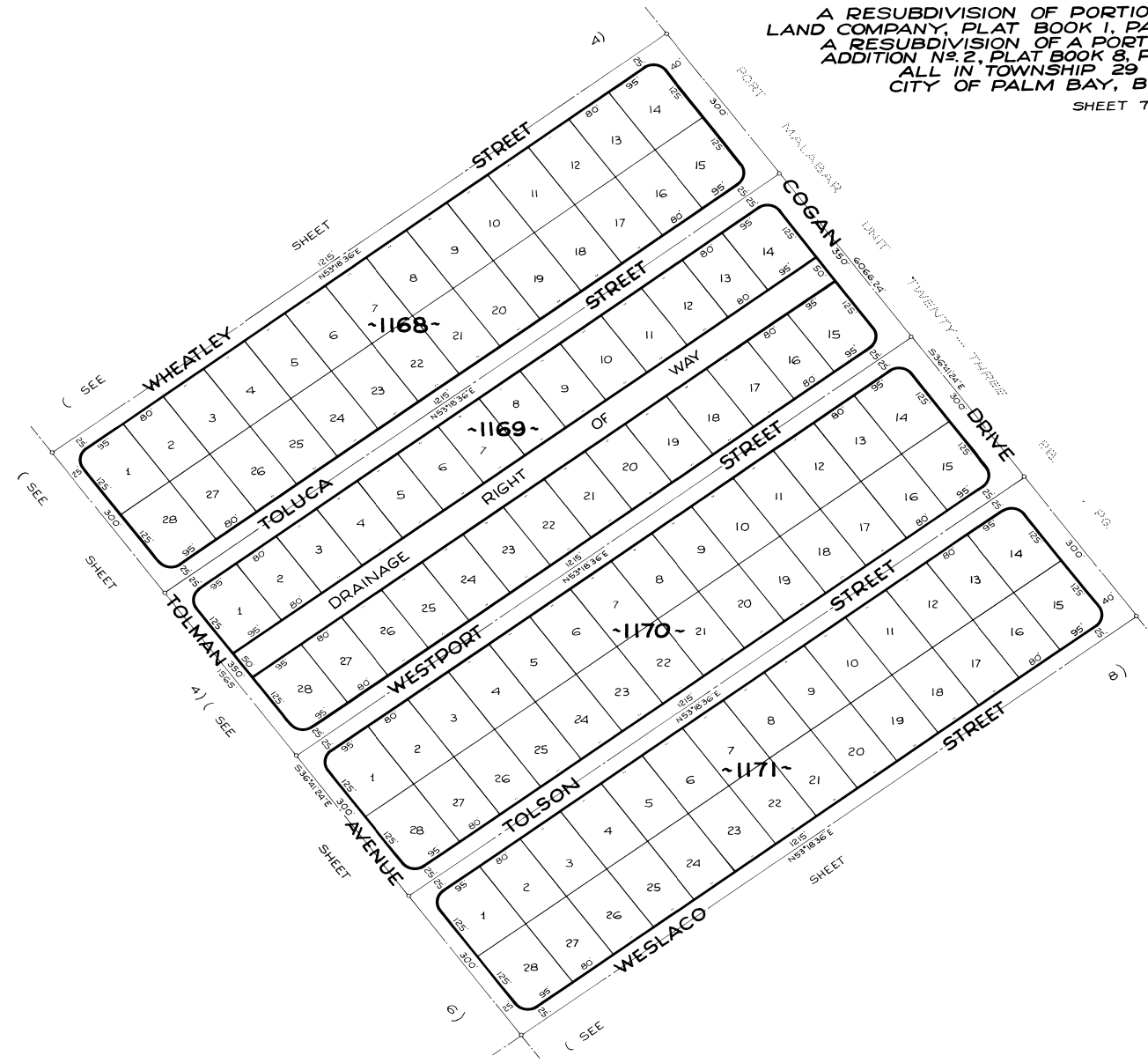


PORT MALABAR UNIT TWENTY FOUR

A RESUBDIVISION OF PORTIONS OF THE FLORIDA INDIAN RIVER
LAND COMPANY, PLAT BOOK 1, PAGE 165, IN SECTIONS 29, 30 AND 32, AND
A RESUBDIVISION OF A PORTION OF MELBOURNE POULTRY COLONY -
ADDITION No. 2, PLAT BOOK 8, PAGE 10, IN SOUTH 1/2 OF SECTION 33,
ALL IN TOWNSHIP 29 SOUTH, RANGE 37 EAST
CITY OF PALM BAY, BREVARD COUNTY, FLORIDA

SHEET 7 OF 13 SHEETS

PLAT BOOK 16
Page 25



CALCULATED BY - BGL
DRAWN BY - VMF
CHECKED BY - JB
APPROVED BY - CBK

ARTHUR L. DAY
CIVIL ENGINEER
MIAMI - FLORIDA

SHEET 7 OF 13 SHEETS
112 LOTS THIS SHEET