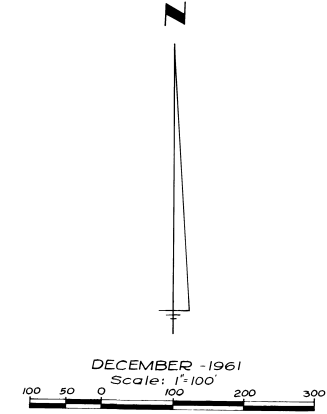
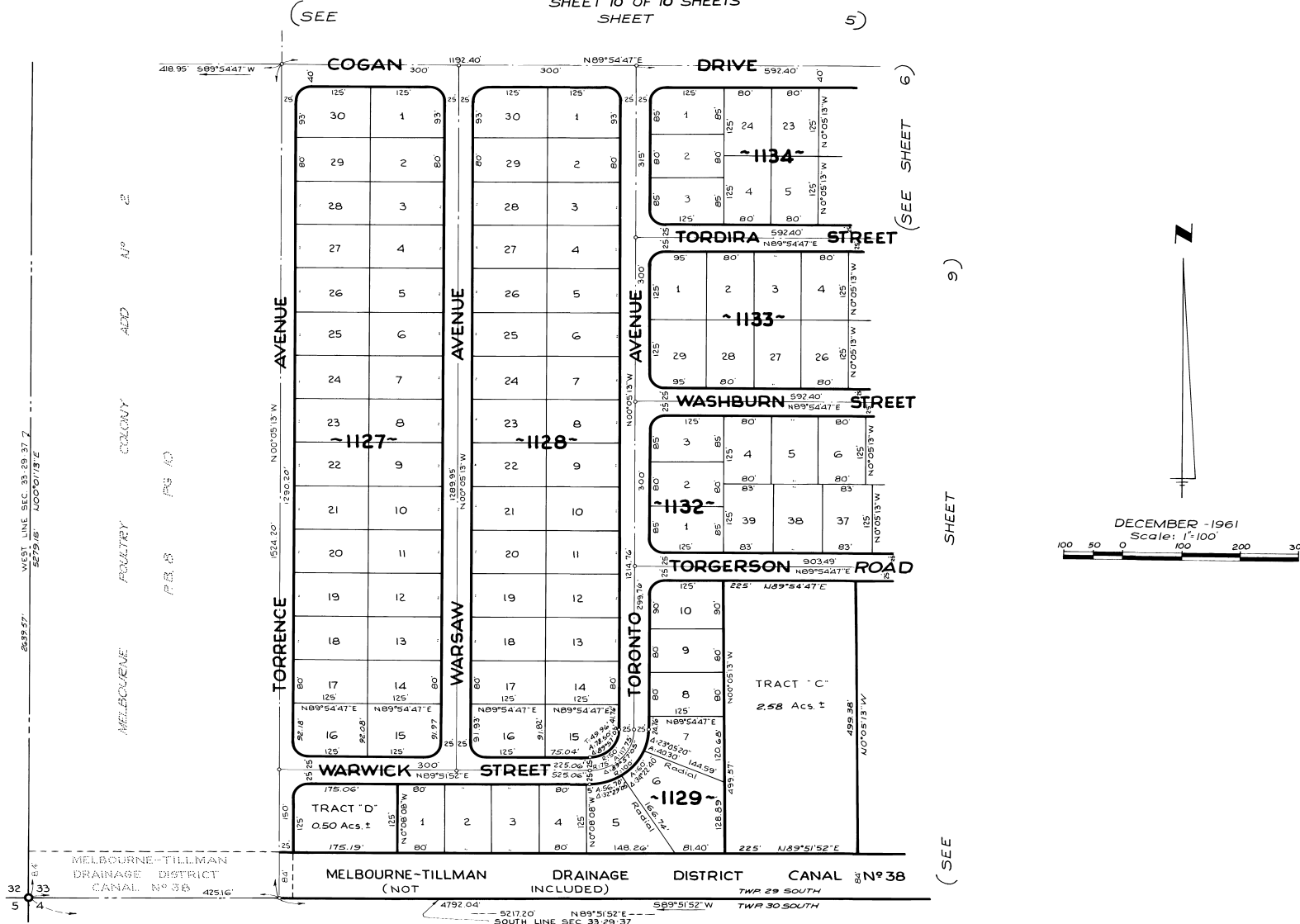


# PORT MALABAR UNIT TWENTY THREE

PLAT BOOK 16  
PAGE 28

A RESUBDIVISION OF PORTIONS OF THE FLORIDA INDIAN RIVER  
LAND COMPANY, PLAT BOOK 1, PAGE 165, IN SECTIONS 29, 32 AND 33, AND  
A RESUBDIVISION OF A PORTION OF MELBOURNE POULTRY COLONY -  
ADDITION No. 2, PLAT BOOK 8, PAGE 10, IN SOUTH 1/2 OF SECTION 33,  
ALL IN TOWNSHIP 29 SOUTH, RANGE 37 EAST  
CITY OF PALM BAY, BREVARD COUNTY, FLORIDA

SHEET 10 OF 10 SHEETS  
SHEET



33  
5  
4  
WEST LINE SEC. 33 29 37 E  
5275.15' L00°07'13"E  
2639.57'  
MELBOURNE POULTRY COLONY ADD No. 2 P.B. 8 PG. 10  
MELBOURNE-TILLMAN DRAINAGE DISTRICT CANAL No. 3B 425.16'  
4792.04' 5217.20' N89°51'52"E 589°51'52"W  
SOUTH LINE SEC. 33 29 37  
TWP 29 SOUTH  
TWP 30 SOUTH

CALCULATED BY- R.G.  
DRAWN BY- V.M.F.  
CHECKED BY- J.B.  
APPROVED BY- C.G.K.

ARTHUR L. DAY  
CIVIL ENGINEER  
MIAMI - FLORIDA

SHEET 10 OF 10 SHEETS  
94 LOTS THIS SHEET