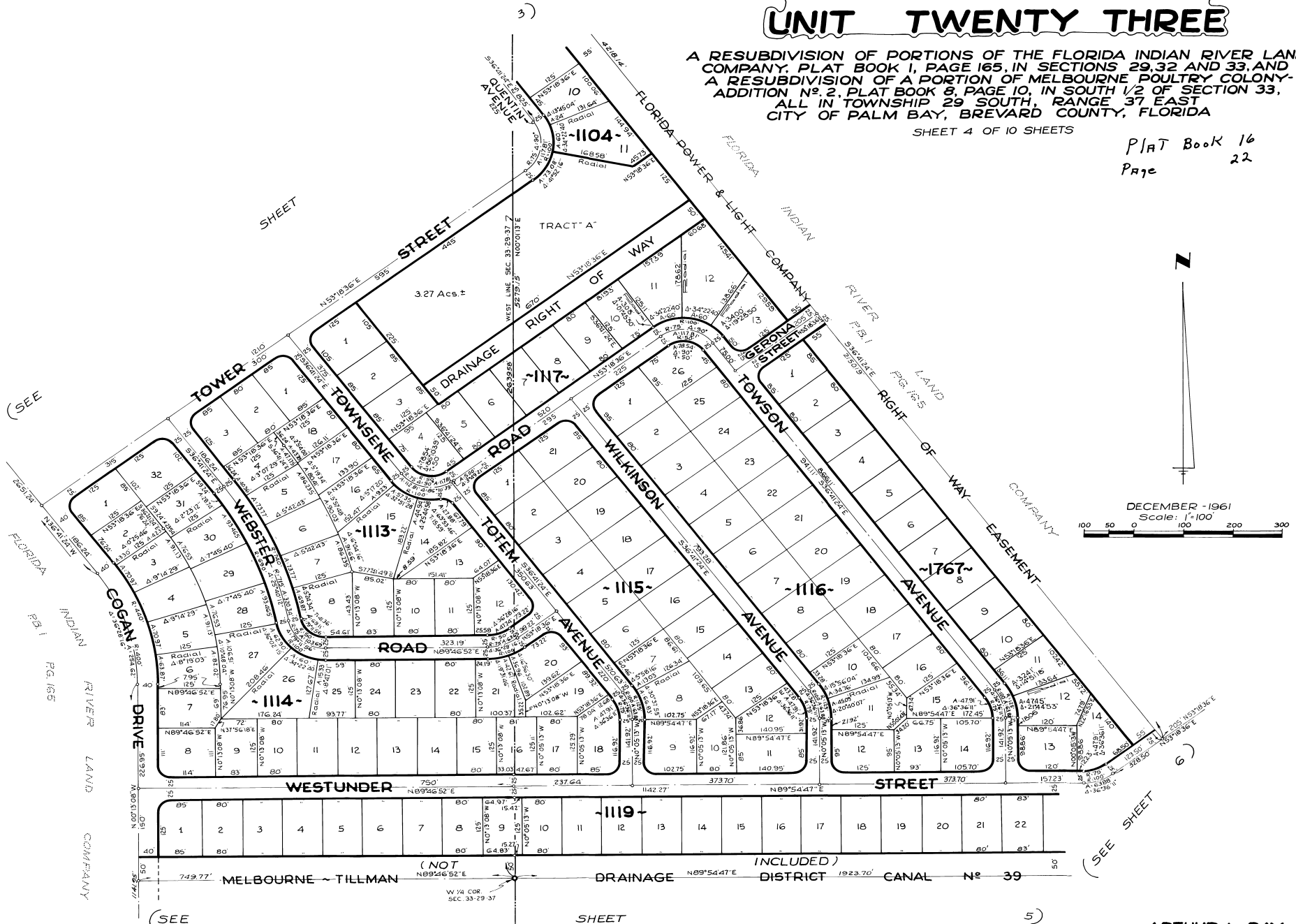


PORT MALABAR UNIT TWENTY THREE

A RESUBDIVISION OF PORTIONS OF THE FLORIDA INDIAN RIVER LAND COMPANY, PLAT BOOK 1, PAGE 165, IN SECTIONS 29, 32 AND 33, AND A RESUBDIVISION OF A PORTION OF MELBOURNE POULTRY COLONY- ADDITION No. 2, PLAT BOOK 8, PAGE 10, IN SOUTH 1/2 OF SECTION 33, ALL IN TOWNSHIP 29 SOUTH, RANGE 37 EAST CITY OF PALM BAY, BREVARD COUNTY, FLORIDA

SHEET 4 OF 10 SHEETS

PLAT Book 16
Page 22



(SEE

(SEE SHEET

(SEE

SHEET

5)

CALCULATED BY: *AMH*
DRAWN BY: *VMI*
CHECKED BY: *VCS*
APPROVED BY: *CGK*

ARTHUR L. DAY
CIVIL ENGINEER
MIAMI - FLORIDA

SHEET 4 OF 10 SHEETS
148 LOTS THIS SHEET