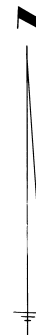
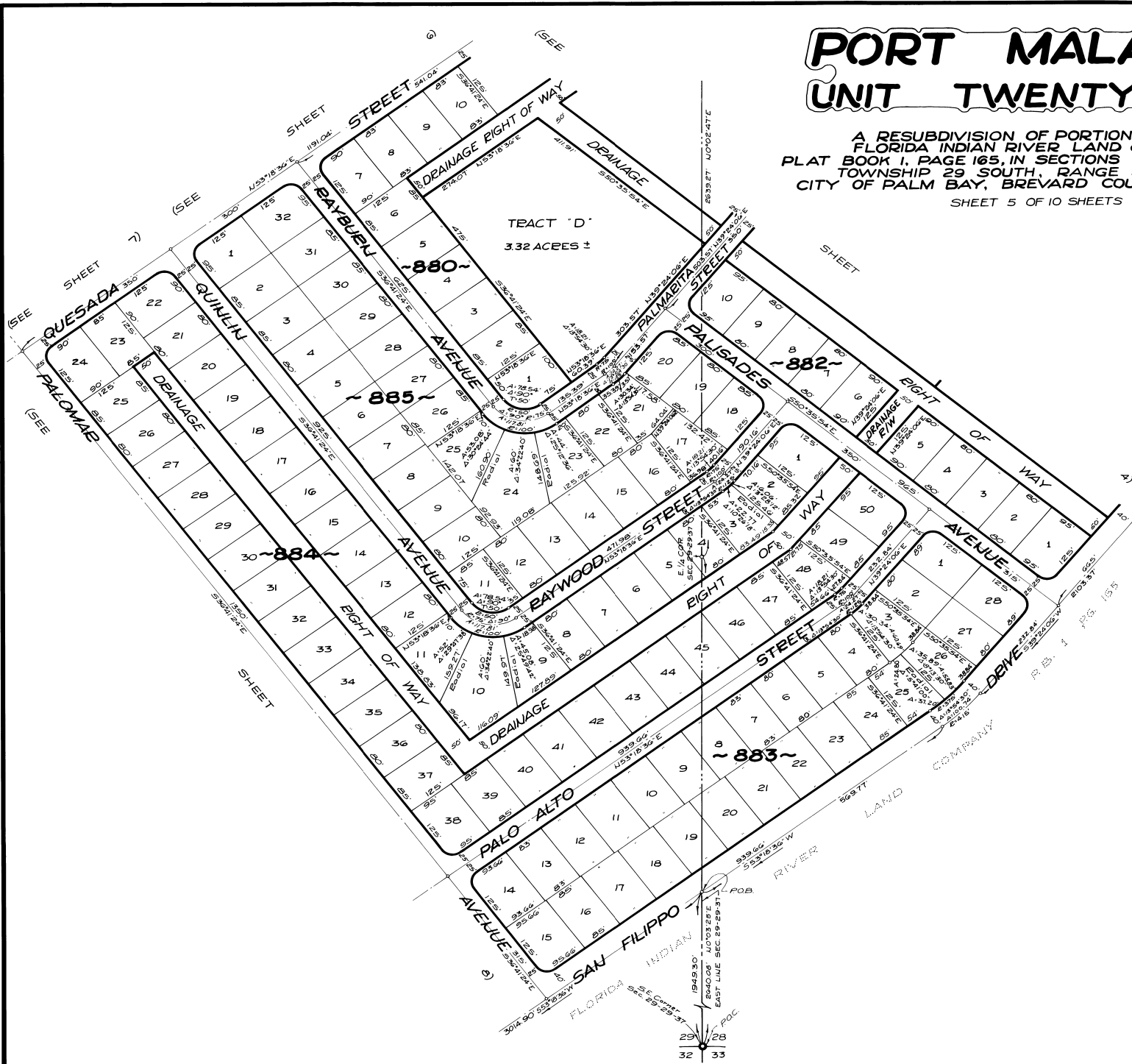


PORT MALABAR UNIT TWENTY TWO

A RESUBDIVISION OF PORTIONS OF THE
FLORIDA INDIAN RIVER LAND COMPANY,
PLAT BOOK 1, PAGE 165, IN SECTIONS 20, 21, 28 AND 29,
TOWNSHIP 29 SOUTH, RANGE 37 EAST
CITY OF PALM BAY, BREVARD COUNTY, FLORIDA

SHEET 5 OF 10 SHEETS

PLAT Book 16
Page 13



DECEMBER - 1961
Scale: 1"=100'
100 50 0 100 200 300

CALCULATED BY: *PLM*
DRAWN BY: *SP*
CHECKED BY: *JB*
APPROVED BY: *CGH*

ARTHUR L. DAY
CIVIL ENGINEER
MIAMI - FLORIDA

SHEET 5 OF 10 SHEETS
130 LOTS THIS SHEET