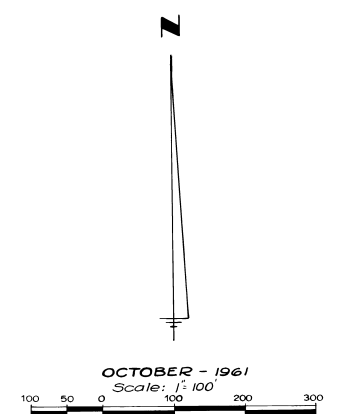
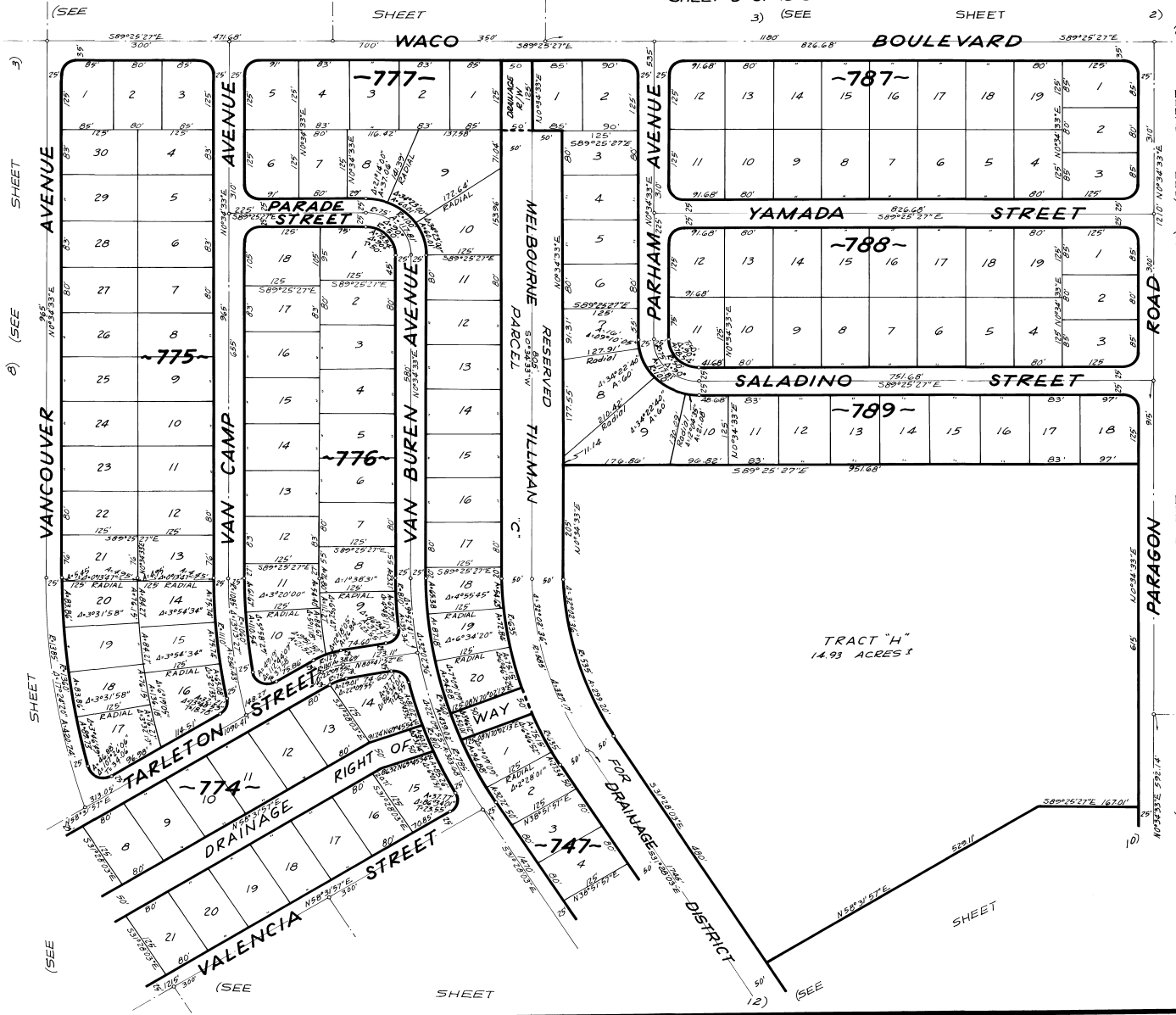


PORT MALABAR UNIT SIXTEEN

PLAT Book 15
PAGE 92

A SUBDIVISION OF A PORTION OF SECTION 16, AND
A RESUBDIVISION OF A PORTION OF THE FLORIDA INDIAN RIVER
LAND COMPANY, PLAT BOOK 1, PAGE 165, IN SECTIONS 17 AND 21,
ALL IN TOWNSHIP 29 SOUTH, RANGE 37 EAST
CITY OF PALM BAY, BREVARD COUNTY, FLORIDA

SHEET 9 OF 15 SHEETS



CALCULATED BY R.G.
DRAWN BY J.R.B.
CHECKED BY J.B.
APPROVED BY G.H.

ARTHUR L. DAY
CIVIL ENGINEER
MIAMI - FLORIDA

SHEET 9 OF 15 SHEETS
142 LOTS THIS SHEET