

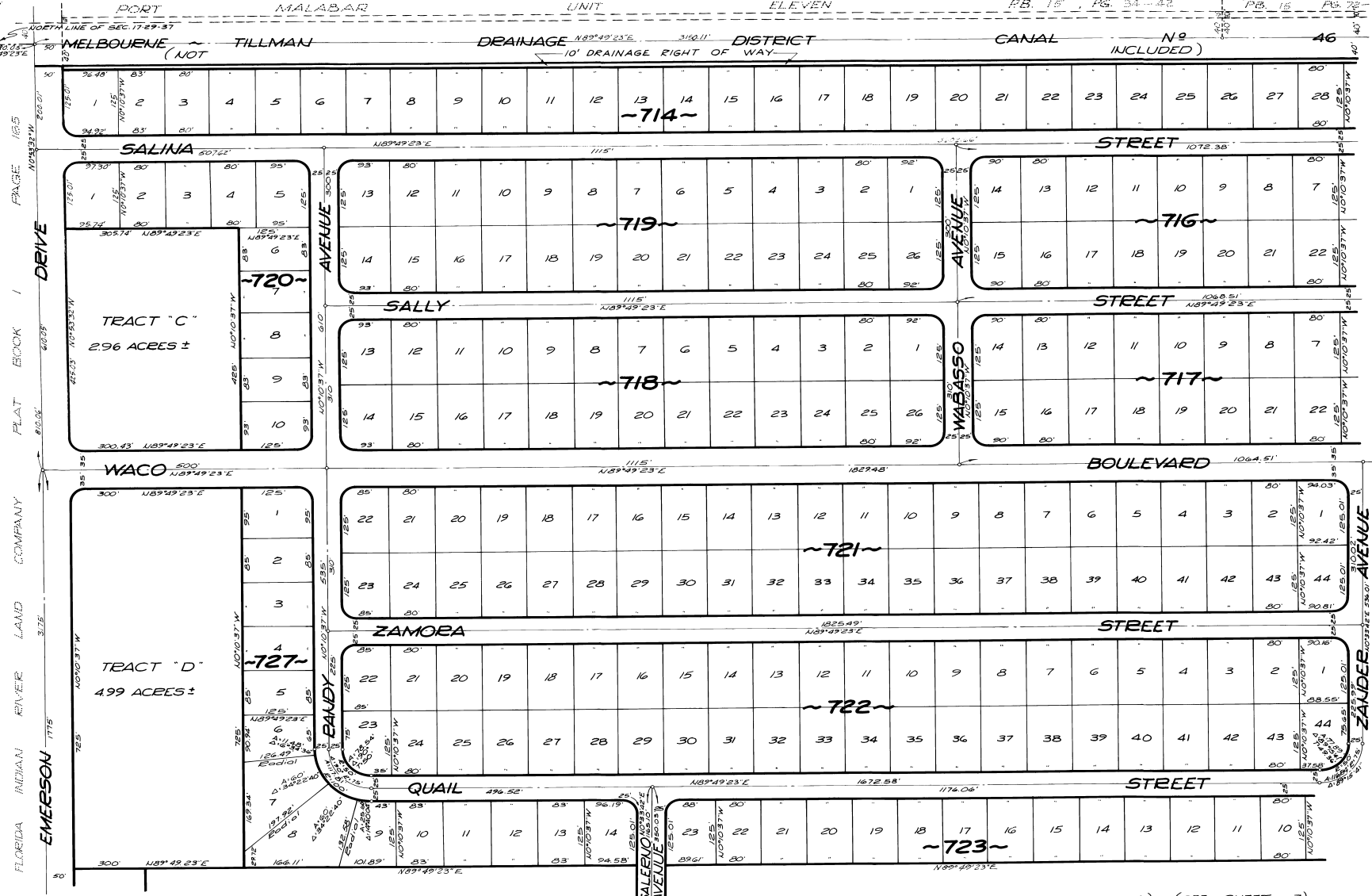
PORT MALABAR UNIT SIXTEEN

PLAT Book 15
PAGE 88

A SUBDIVISION OF A PORTION OF SECTION 16, AND
A RESUBDIVISION OF A PORTION OF THE FLORIDA INDIAN RIVER
LAND COMPANY, PLAT BOOK 1, PAGE 165, IN SECTIONS 17 AND 21,
ALL IN TOWNSHIP 29 SOUTH, RANGE 37 EAST
CITY OF PALM BAY, BREVARD COUNTY, FLORIDA

SHEET 5 OF 15 SHEETS

PORT MALABAR
UNIT FIFTEEN
PLAT 15 PAGE 88-89



CALCULATED BY: ALM
DRAWN BY: SP
CHECKED BY: JB
APPROVED BY: CGK

OCTOBER - 1961
Scale: 1" = 100'
0 50 100 150 200 250 300

6) (SEE SHEET 7)
ARTHUR L. DAY
CIVIL ENGINEER
MIAMI - FLORIDA

SHEET 5 OF 15 SHEETS
238 LOTS THIS SHEET