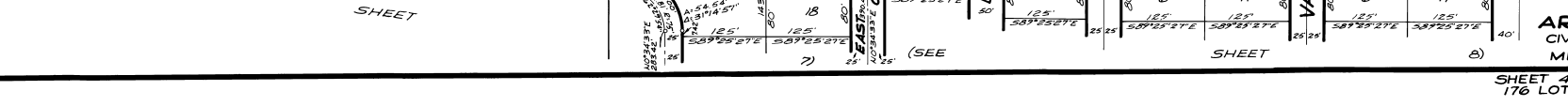
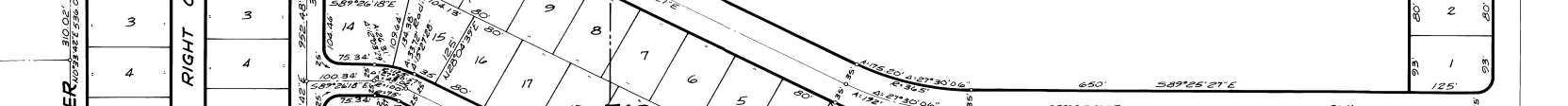
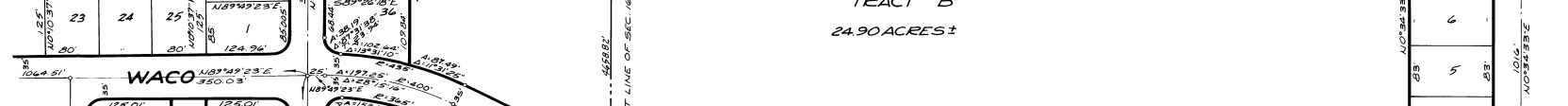
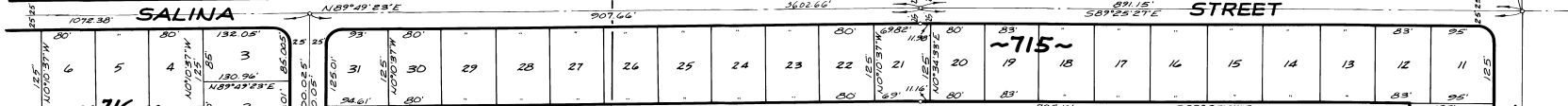
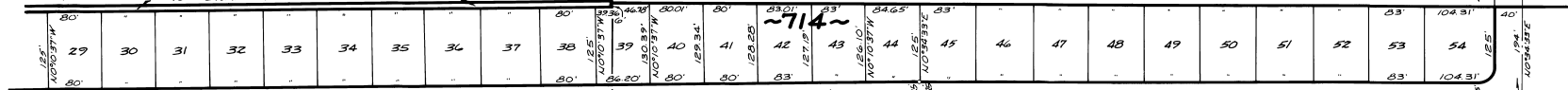


PORT MALABAR UNIT SIXTEEN

PLAT BOOK 15
PAGE 87

OCTOBER - 1961
Scale: 1" = 100'

A SUBDIVISION OF A PORTION OF SECTION 16, AND
A RESUBDIVISION OF A PORTION OF THE FLORIDA INDIAN RIVER
LAND COMPANY, PLAT BOOK 1, PAGE 165, IN SECTIONS 17 AND 21,
ALL IN TOWNSHIP 29 SOUTH, RANGE 37 EAST
CITY OF PALM BAY, BREVARD COUNTY, FLORIDA
SHEET 4 OF 15 SHEETS



TRACT "B"
24.90 ACRES ±

CALCULATED BY: AWT
DRAWN BY: SFP
CHECKED BY: JAB
APPROVED BY: CGK

ARTHUR L. DAY
CIVIL ENGINEER
MIAMI - FLORIDA

SHEET 4 OF 15 SHEETS
176 LOTS THIS SHEET