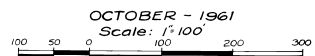
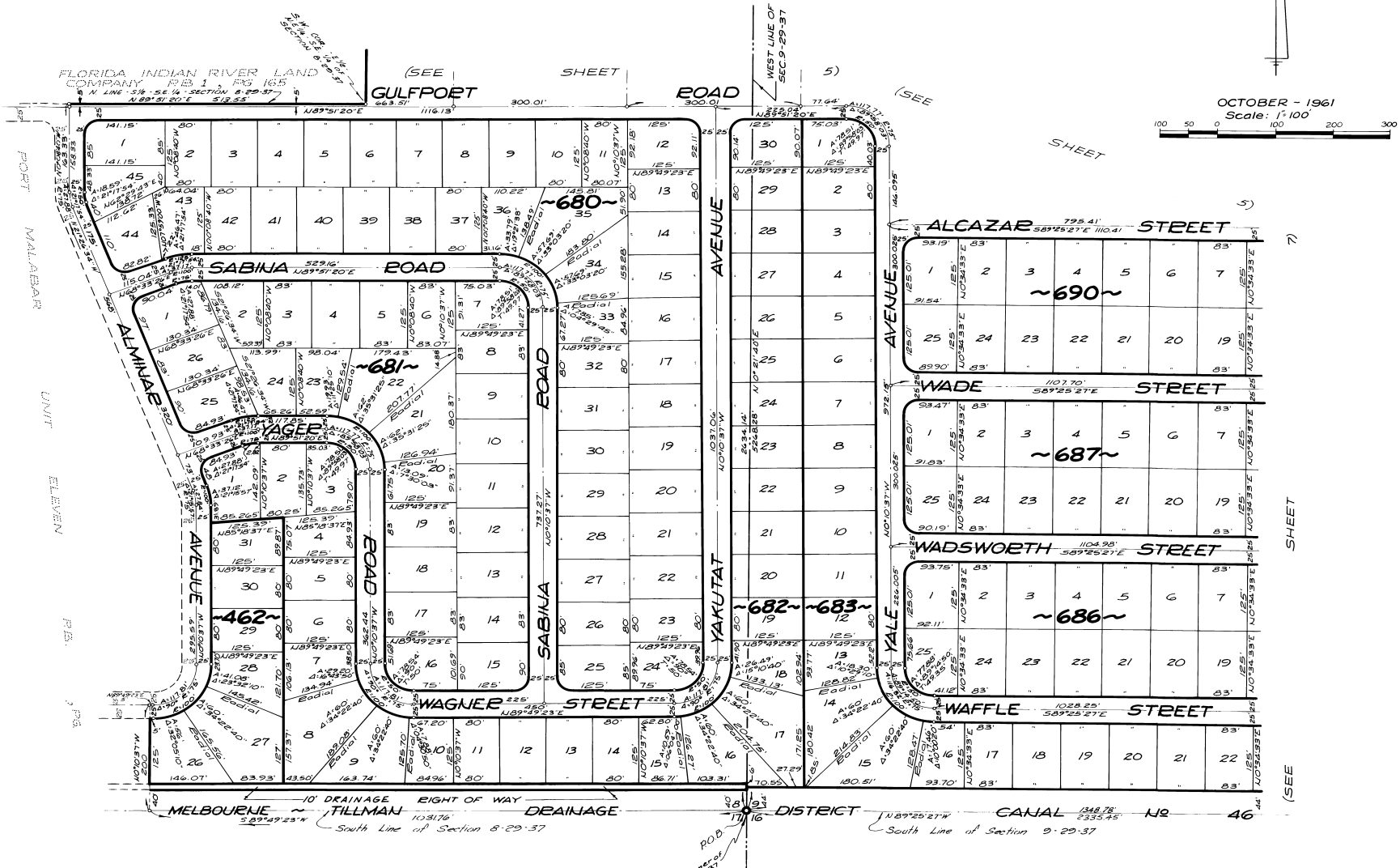


# PORT MALABAR UNIT FIFTEEN

A RESUBDIVISION OF PORTIONS OF THE FLORIDA INDIAN RIVER  
LAND COMPANY, PLAT BOOK 1, PAGE 165, IN SECTIONS 8 AND 9,  
TOWNSHIP 29 SOUTH, RANGE 37 EAST  
CITY OF PALM BAY  
BREVARD COUNTY, FLORIDA  
SHEET 8 OF 8 SHEETS



CALCULATED BY: LSL  
DRAWN BY: S.P.  
CHECKED BY: JB  
APPROVED BY: CGH

ARTHUR L. DAY  
CIVIL ENGINEER  
MIAMI - FLORIDA