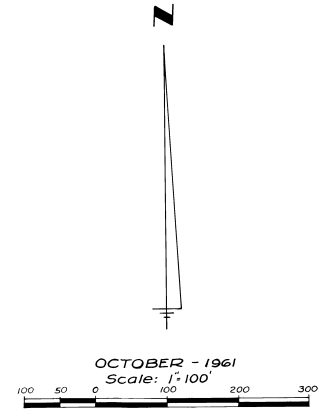
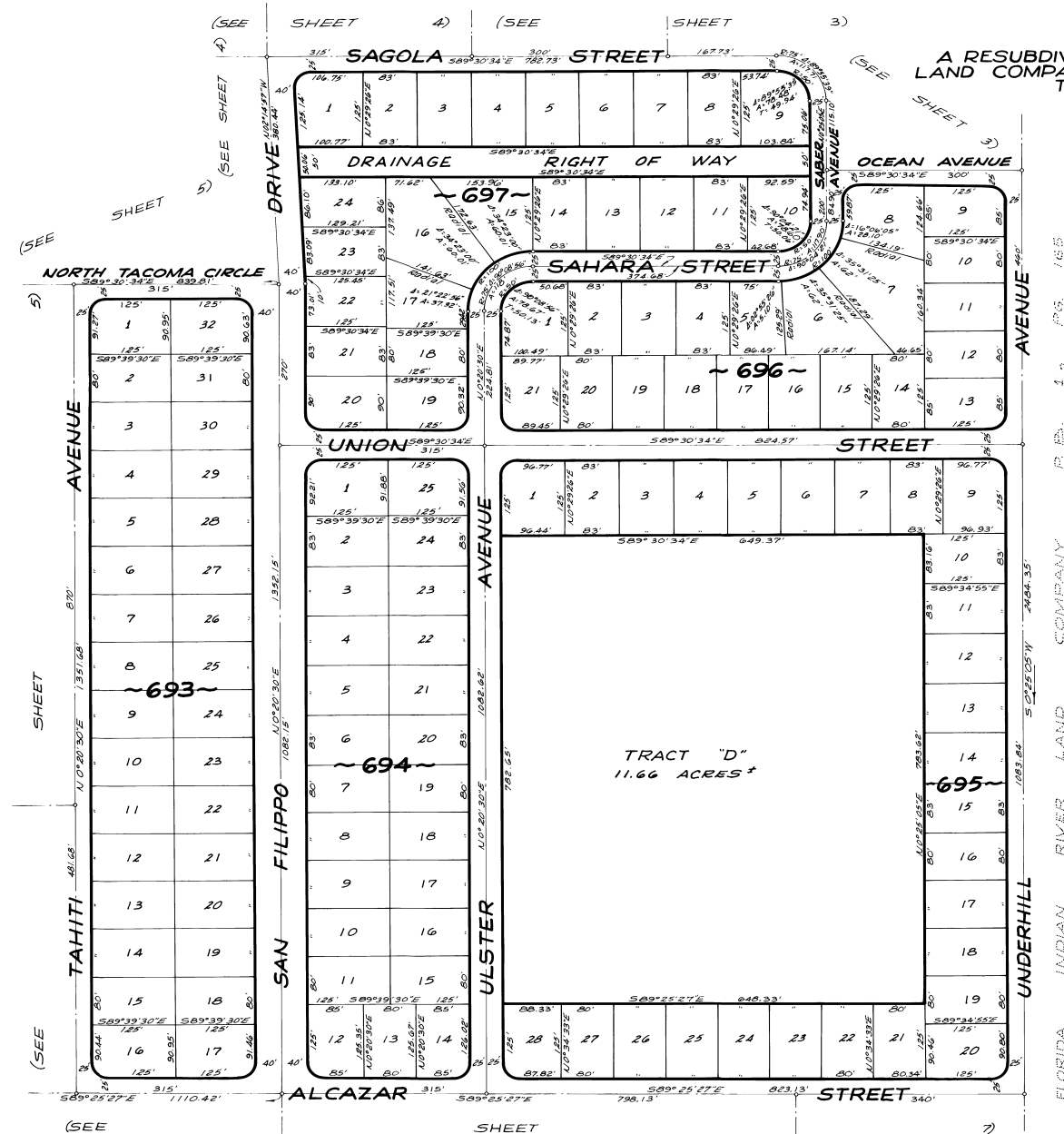


PORT MALABAR UNIT FIFTEEN

A RESUBDIVISION OF PORTIONS OF THE FLORIDA INDIAN RIVER
LAND COMPANY, PLAT BOOK 15, PAGE 77, IN SECTIONS 8 AND 9,
TOWNSHIP 29 SOUTH, RANGE 37 EAST
CITY OF PALM BAY
BREVARD COUNTY, FLORIDA

SHEET 6 OF 8 SHEETS

PLAT BOOK 15
Page 77



CALCULATED BY: PFC.
DRAWN BY: R.C.G.
CHECKED BY: J.B.
APPROVED BY: COK

ARTHUR L. DAY
CIVIL ENGINEER
MIAMI - FLORIDA

SHEET 6 OF 8 SHEETS
130 LOTS THIS SHEET