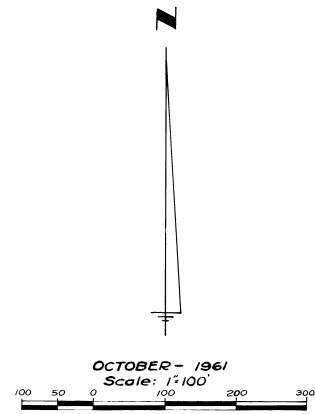
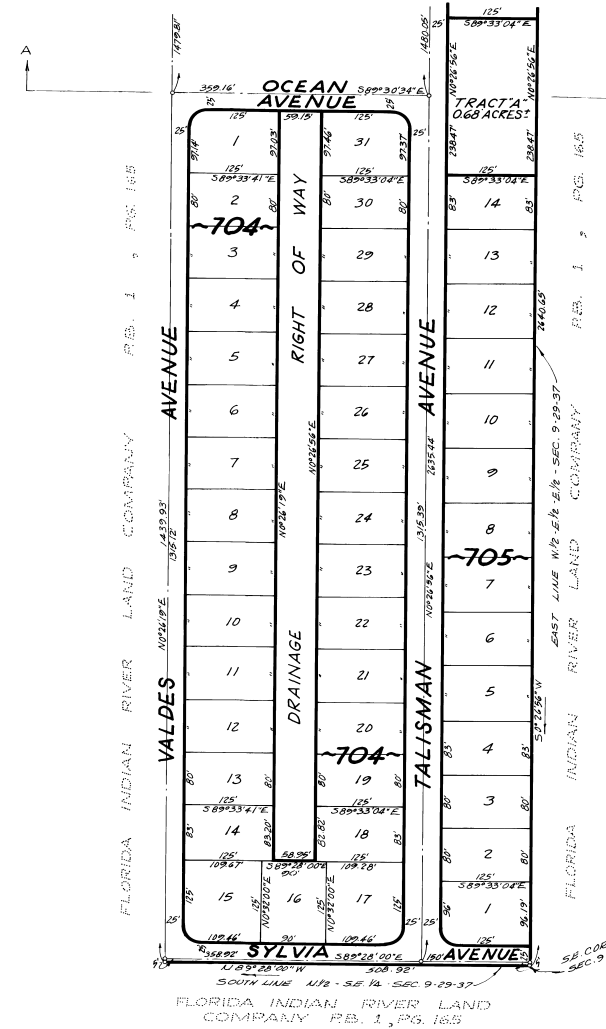
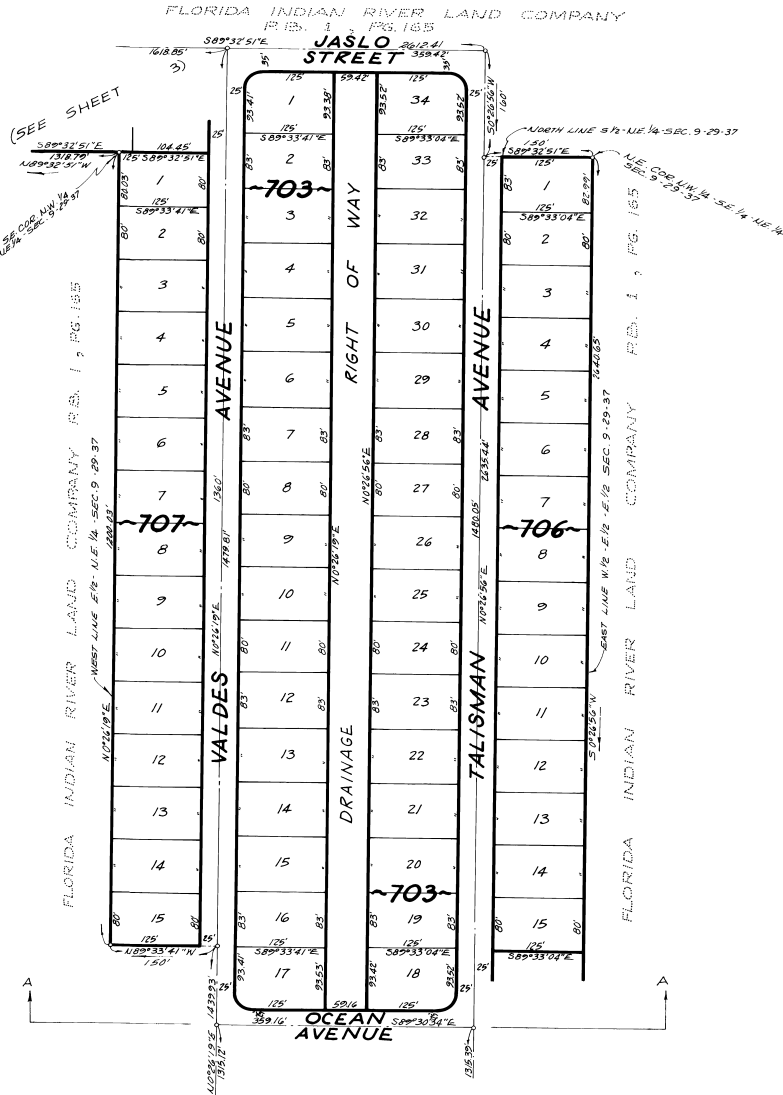


PORT MALABAR UNIT FIFTEEN

A RESUBDIVISION OF PORTIONS OF THE FLORIDA INDIAN RIVER
LAND COMPANY, PLAT BOOK 1, PAGE 165, IN SECTIONS 8 AND 9,
TOWNSHIP 29 SOUTH, RANGE 37 EAST
CITY OF PALM BAY
BREVARD COUNTY, FLORIDA
SHEET 2 OF 8 SHEETS



CALCULATED BY: R.S.
DRAWN BY: J.R.D.
CHECKED BY: J.B.
APPROVED BY: C.G.K.

ARTHUR L. DAY
CIVIL ENGINEER
MIAMI - FLORIDA