

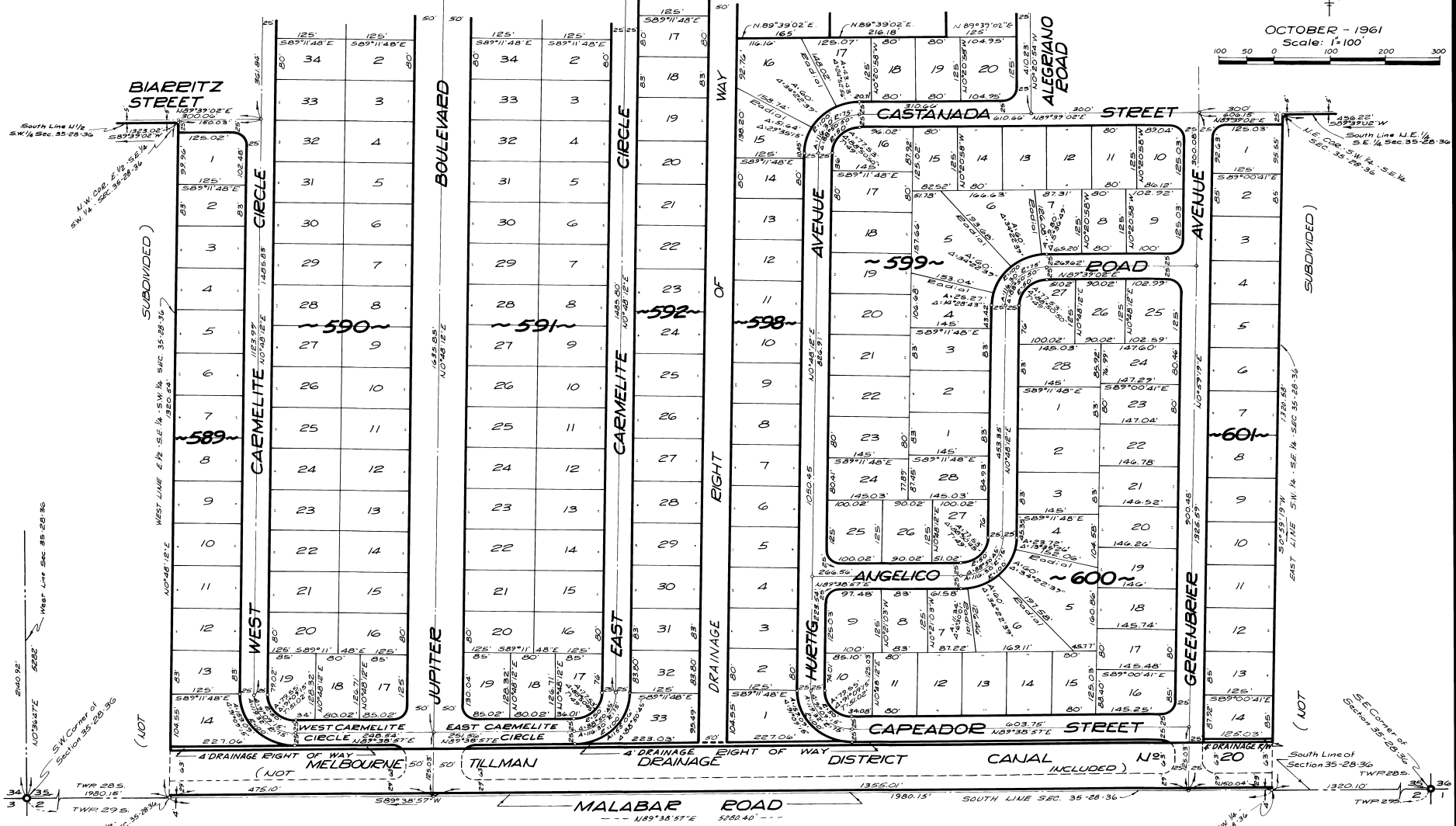
PORT MALABAR UNIT FOURTEEN

PART Book 15
Page 71

A SUBDIVISION OF PORTIONS OF SECTIONS
34 AND 35, TOWNSHIP 28 SOUTH, RANGE 36 EAST
CITY OF PALM BAY
BREVARD COUNTY, FLORIDA
SHEET 8 OF 8 SHEETS

(SEE SHEET 6) (SEE SHEET 7)

OCTOBER - 1961
Scale: 1" = 100'



CALCULATED BY: E.J.M.
DRAWN BY: S.F.
CHECKED BY: J.S.
APPROVED BY: C.G.H.

ARTHUR L. DAY
CIVIL ENGINEER
MIAMI - FLORIDA

SHEET 8 OF 8 SHEETS
187 LOTS THIS SHEET