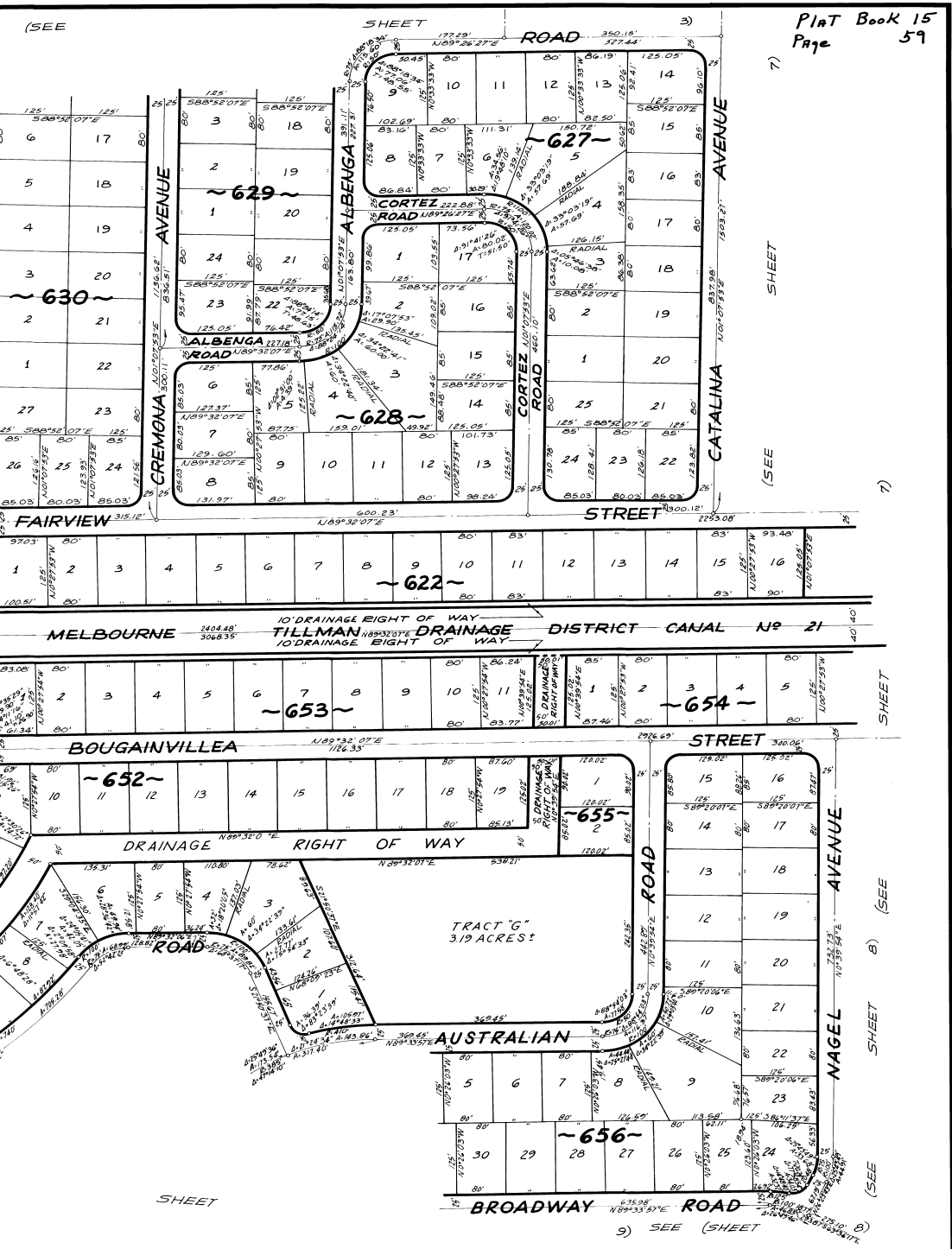
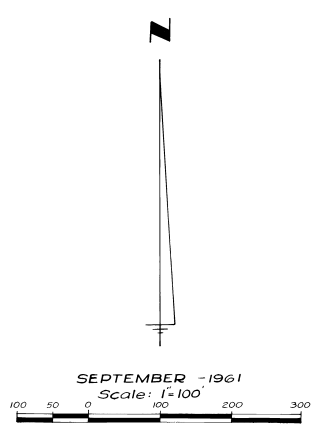


# PORT MALABAR UNIT THIRTEEN

A SUBDIVISION OF PORTIONS OF SECTIONS  
35 AND 36, TOWNSHIP 28 SOUTH, RANGE 36 EAST  
CITY OF PALM BAY  
BREVARD COUNTY, FLORIDA  
SHEET 6 OF 10 SHEETS



PLAT BOOK 15  
Page 59

CALCULATED BY: JG  
DRAWN BY: RCG  
CHECKED BY: JB  
APPROVED BY: CGH

ARTHUR L. DAY  
CIVIL ENGINEER  
MIAMI - FLORIDA

SHEET 6 OF 10 SHEETS  
164 LOTS THIS SHEET