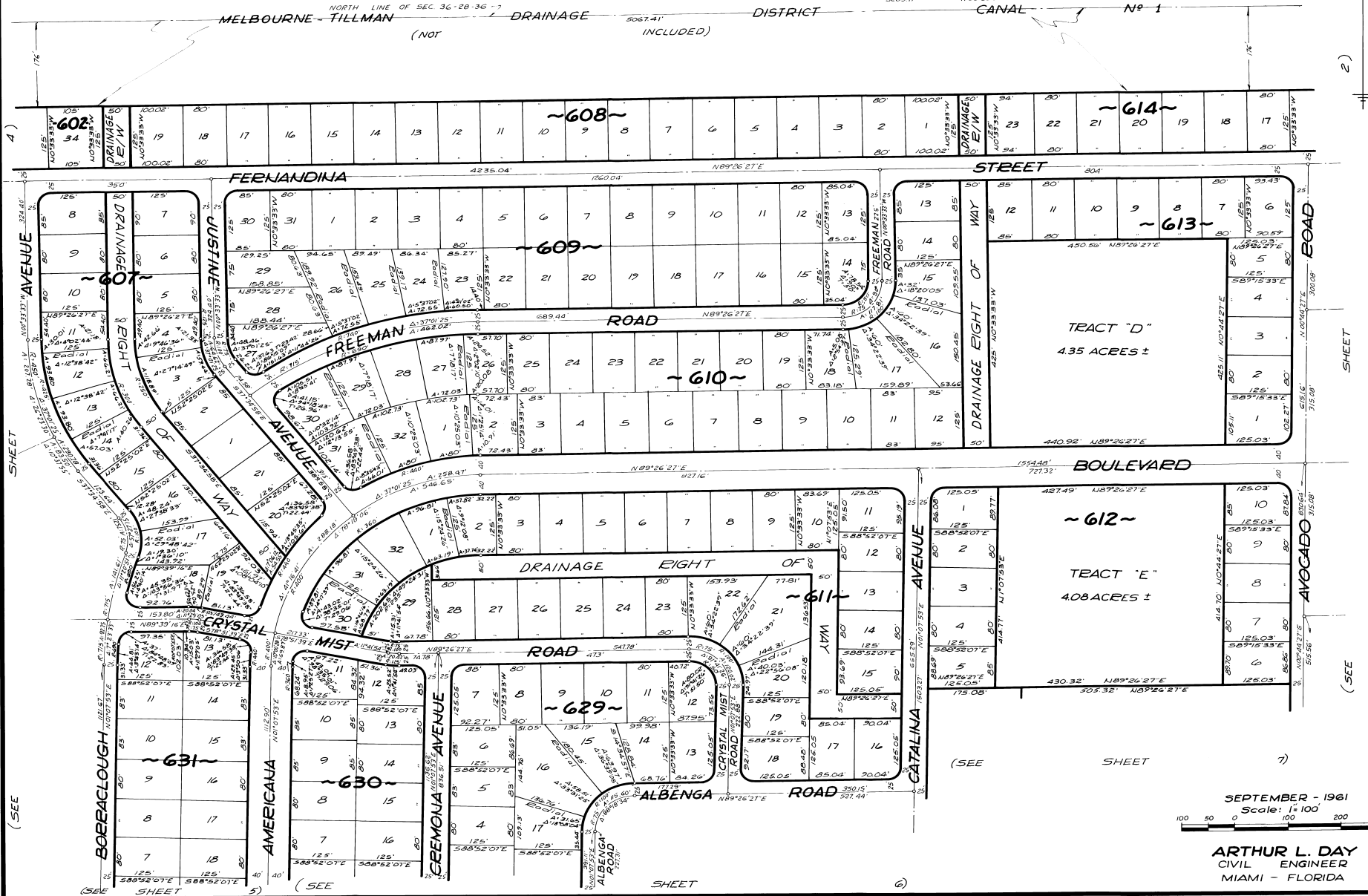


PORT MALABAR UNIT THIRTEEN

PLAT BOOK 15
PAGE 56

A SUBDIVISION OF PORTIONS OF SECTIONS 35 AND 36,
TOWNSHIP 28 SOUTH, RANGE 36 EAST
CITY OF PALM BAY
BREVARD COUNTY, FLORIDA
SHEET 3 OF 10 SHEETS



CALCULATED BY: *Arthur L. Day*
DRAWN BY: S.F.
CHECKED BY: J.B.
APPROVED BY: C.G.K.

SEPTEMBER - 1961
Scale: 1" = 100'

ARTHUR L. DAY
CIVIL ENGINEER
MIAMI - FLORIDA

SHEET 3 OF 10 SHEETS
201 LOTS THIS SHEET