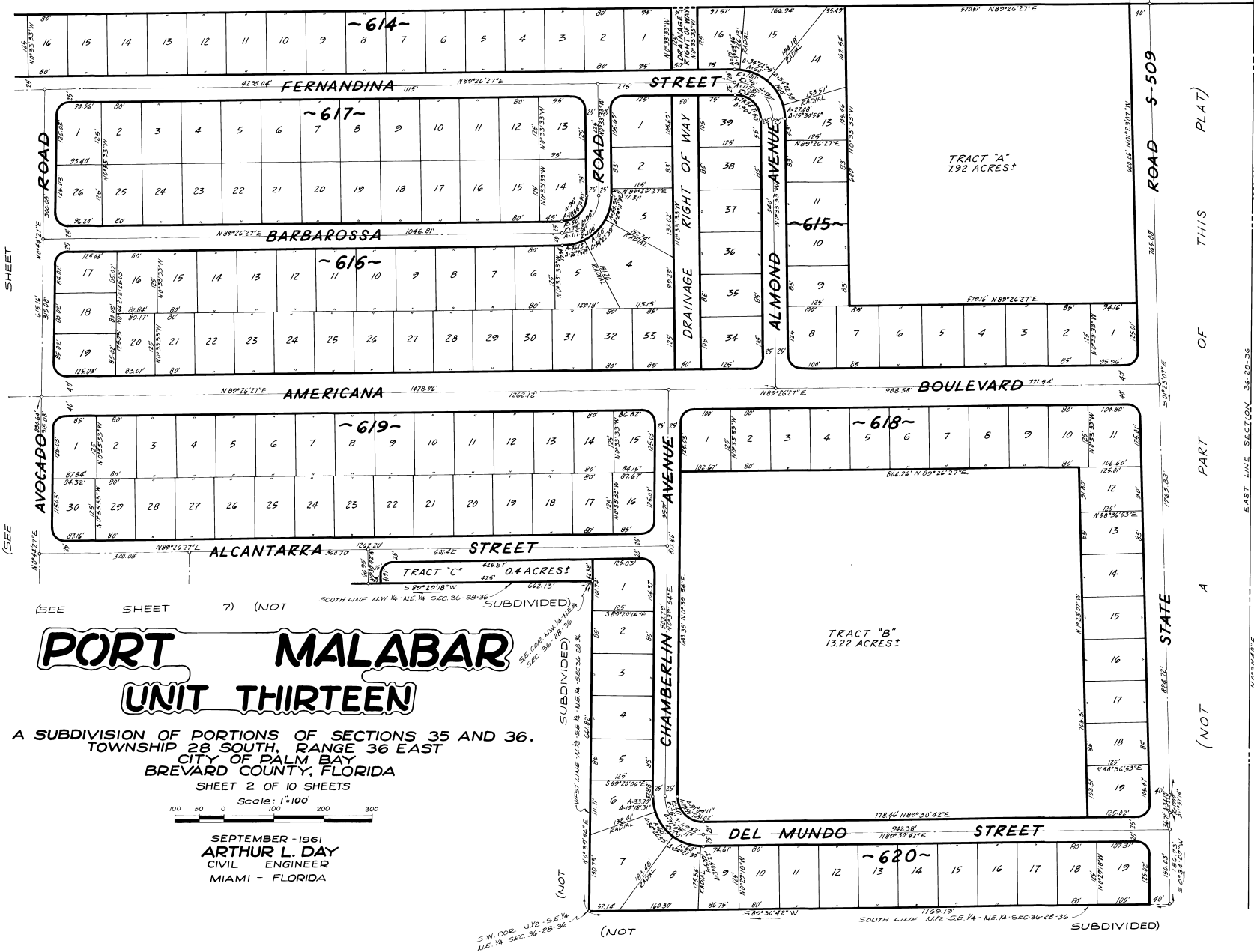


MELBOURNE - TILLMAN DRAINAGE DISTRICT CANAL No. 1

(NOT INCLUDED)



3) 176



PORT MALABAR UNIT THIRTEEN

A SUBDIVISION OF PORTIONS OF SECTIONS 35 AND 36,
TOWNSHIP 28 SOUTH, RANGE 36 EAST
CITY OF PALM BAY
BREVARD COUNTY, FLORIDA
SHEET 2 OF 10 SHEETS

Scale: 1"=100'



SEPTEMBER - 1961
ARTHUR L. DAY
CIVIL ENGINEER
MIAMI - FLORIDA

(SEE SHEET 7) (NOT SUBDIVIDED)

(NOT SUBDIVIDED)

(NOT SUBDIVIDED)

CALCULATED BY: O.P.
DRAWN BY: J.R.B.
CHECKED BY: J.B.
APPROVED BY: C.G.H.