

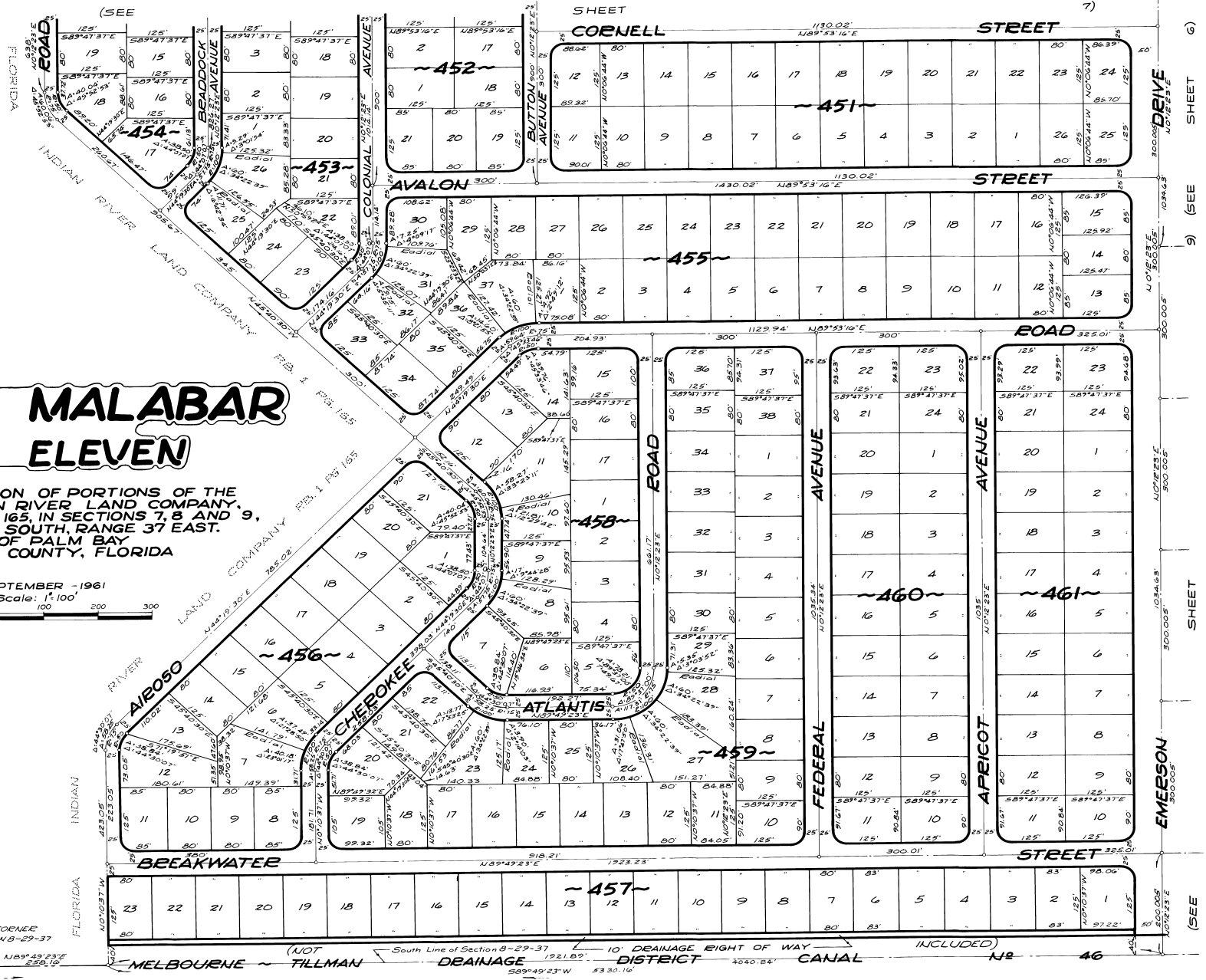


PORT MALABAR UNIT ELEVEN

A RESUBDIVISION OF PORTIONS OF THE
FLORIDA INDIAN RIVER LAND COMPANY,
PLAT BOOK 1, PAGE 165, IN SECTIONS 7, 8 AND 9,
TOWNSHIP 29 SOUTH, RANGE 37 EAST,
CITY OF PALM BAY,
BREVARD COUNTY, FLORIDA

SEPTEMBER - 1961
Scale: 1" = 100'

S.W. COENE
SECTION 8-29-37



ARTHUR L. DAY
CIVIL ENGINEER
MIAMI - FLORIDA

CALCULATED BY: D.P.
DRAWN BY: S.F.
CHECKED BY: J.B.
APPROVED BY: C.H.