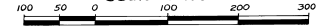


PORT MALABAR UNIT ELEVEN

A RESUBDIVISION OF PORTIONS OF THE FLORIDA INDIAN RIVER
LAND COMPANY, PLAT BOOK 1, PAGE 165, IN SECTIONS 7, 8 AND 9,
TOWNSHIP 29 SOUTH, RANGE 37 EAST
CITY OF PALM BEACH,
BREVARD COUNTY, FLORIDA

SEPTEMBER - 1961

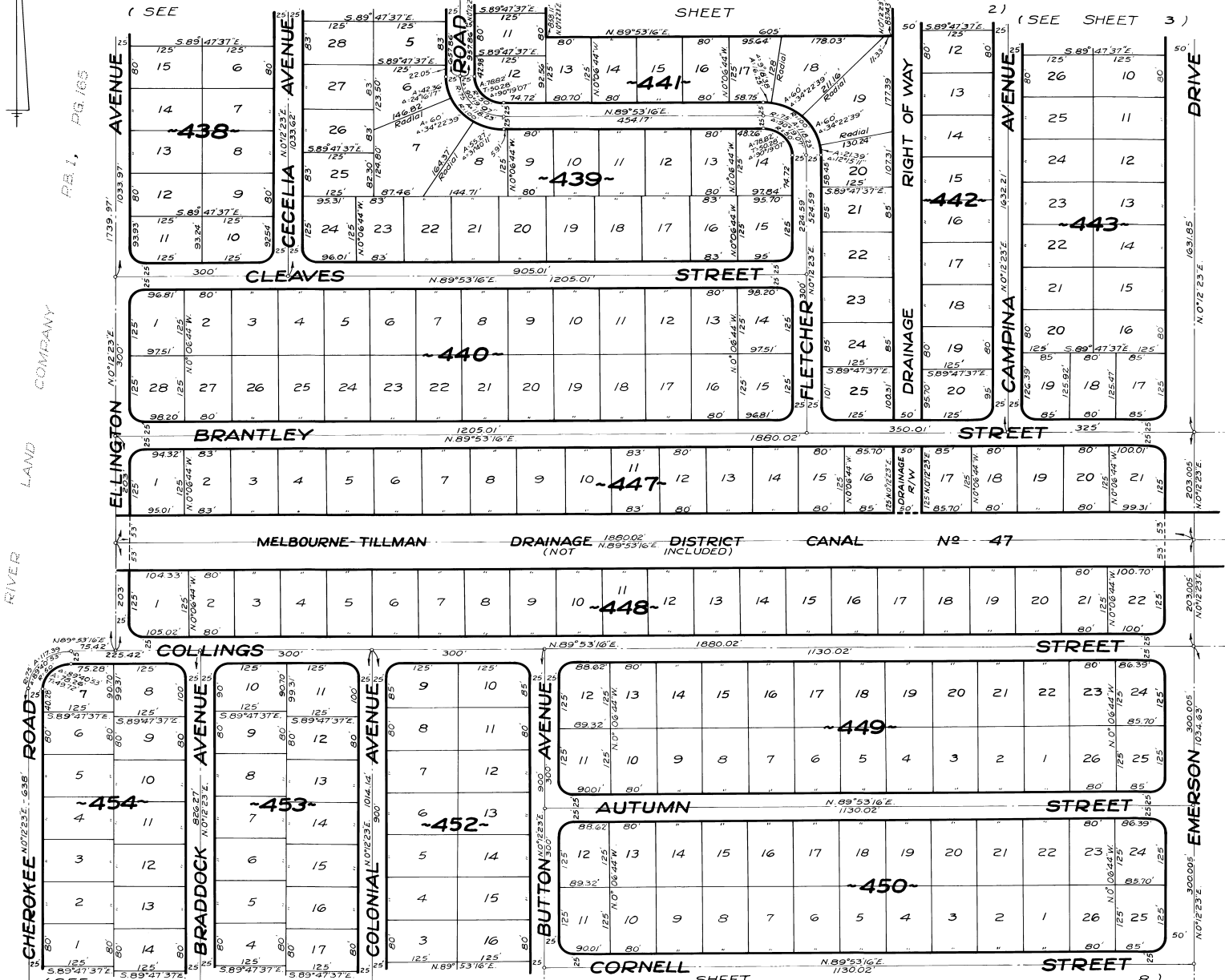
Scale: 1" = 100'



PLAT BOOK 15
Page 40

CALCULATED BY: DP
DRAWN BY: EL
CHECKED BY: JB
APPROVED BY: CGH

FLORIDA INDIAN RIVER LAND COMPANY



(SEE SHEET 6)
SHEET 7
(SEE SHEET 8)

ARTHUR L. DAY
CIVIL ENGINEER
MIAMI - FLORIDA

SHEET 7 OF 9 SHEETS
240 LOTS THIS SHEET