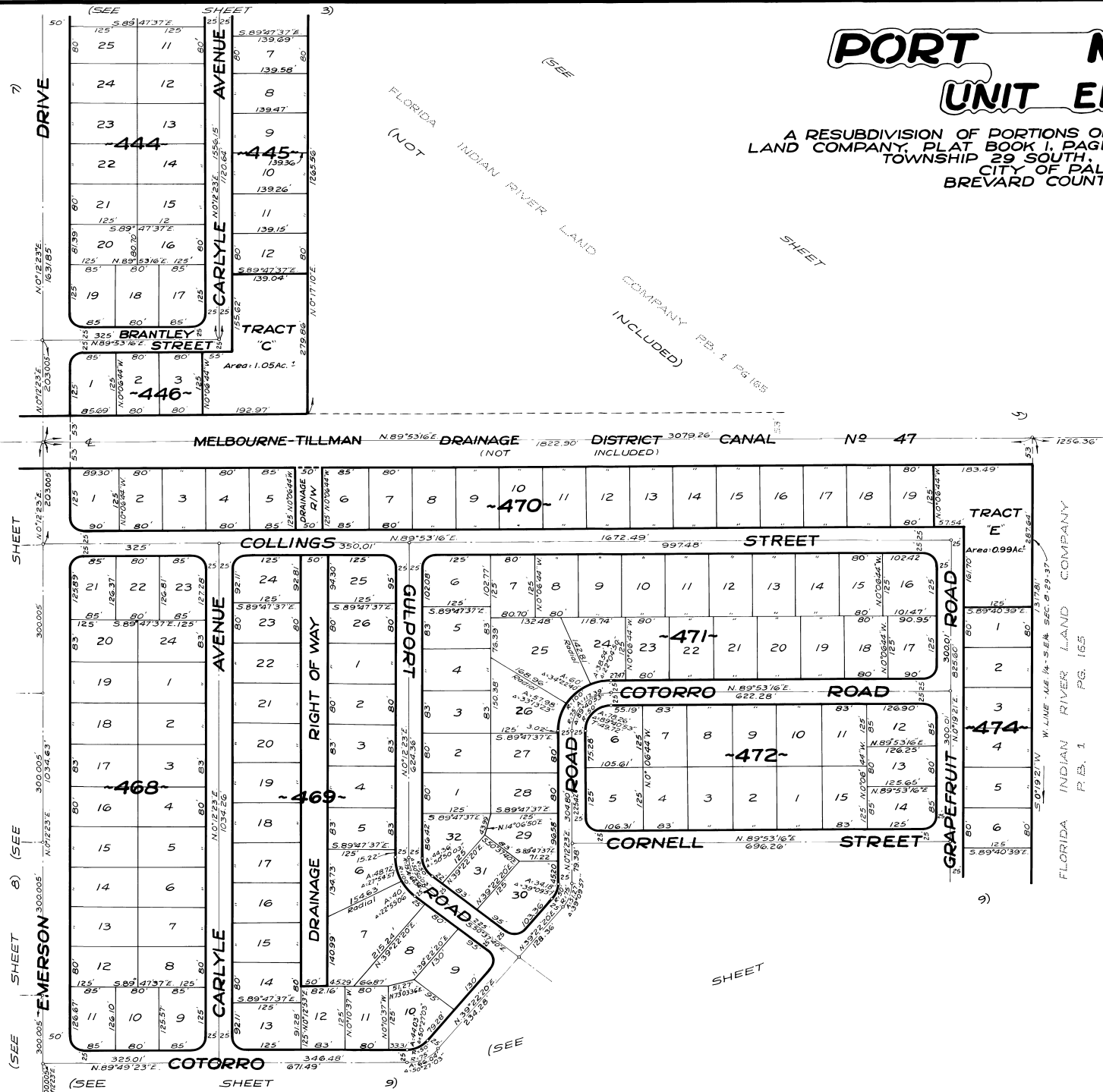


# PORT MALABAR UNIT ELEVEN

A RESUBDIVISION OF PORTIONS OF THE FLORIDA INDIAN RIVER  
LAND COMPANY, PLAT BOOK 1, PAGE 165, IN SECTIONS 7, 8 AND 9,  
TOWNSHIP 29 SOUTH, RANGE 37 EAST  
CITY OF PALM BAY  
BREVARD COUNTY, FLORIDA

PLAT Book 15  
Page 39



SEPTEMBER - 1961  
Scale: 1" = 100'

CALCULATED BY: R.C.J.K.  
DRAWN BY: L.L.  
CHECKED BY: J.B.  
APPROVED BY: C.H.K.

ARTHUR L. DAY  
CIVIL ENGINEER  
MIAMI - FLORIDA

SHEET 6 OF 9 SHEETS  
146 LOTS THIS SHEET