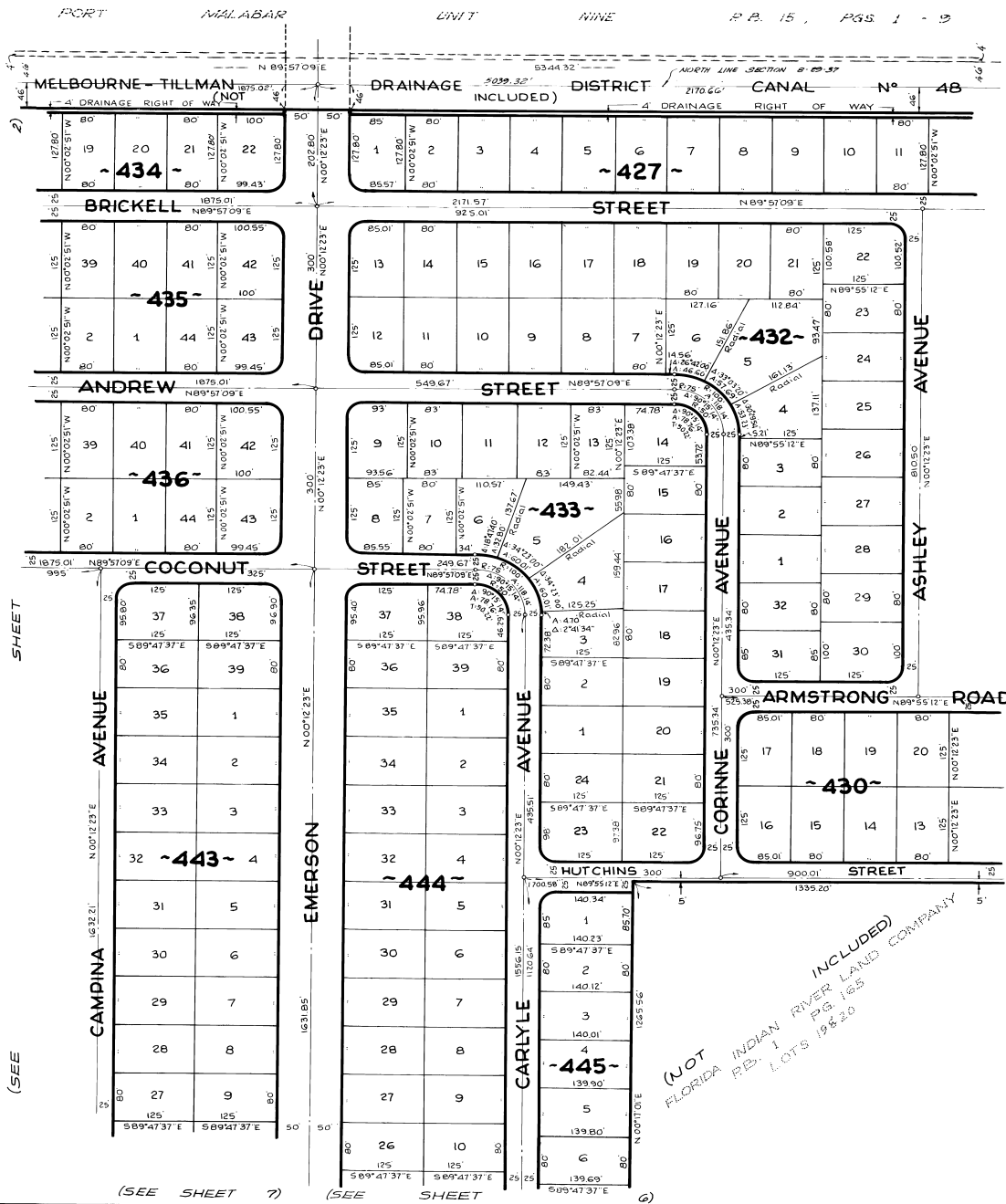
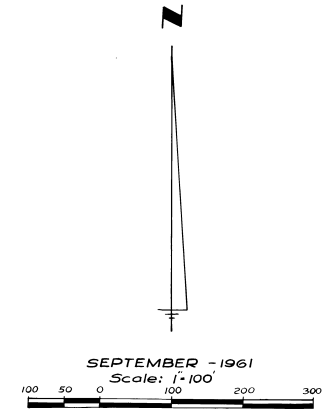


PORT MALABAR UNIT ELEVEN



A RESUBDIVISION OF PORTIONS OF THE
FLORIDA INDIAN RIVER LAND COMPANY,
PLAT BOOK 1, PAGE 165, IN SECTIONS 7, 8 AND 9,
TOWNSHIP 29 SOUTH, RANGE 37 EAST,
CITY OF PALM BAY,
BREVARD COUNTY, FLORIDA

PLAT BOOK 15
PAGE 36



CALCULATED BY: JEC
DRAWN BY: V.M.F.
CHECKED BY: J.B.
APPROVED BY: C.G.H.

(SEE SHEET 7) (SEE SHEET 8) (SEE SHEET 9)

ARTHUR L. DAY
CIVIL ENGINEER
MIAMI - FLORIDA

SHEET 3 OF 9 SHEETS
147 LOTS THIS SHEET