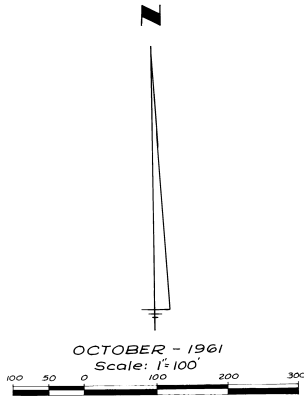
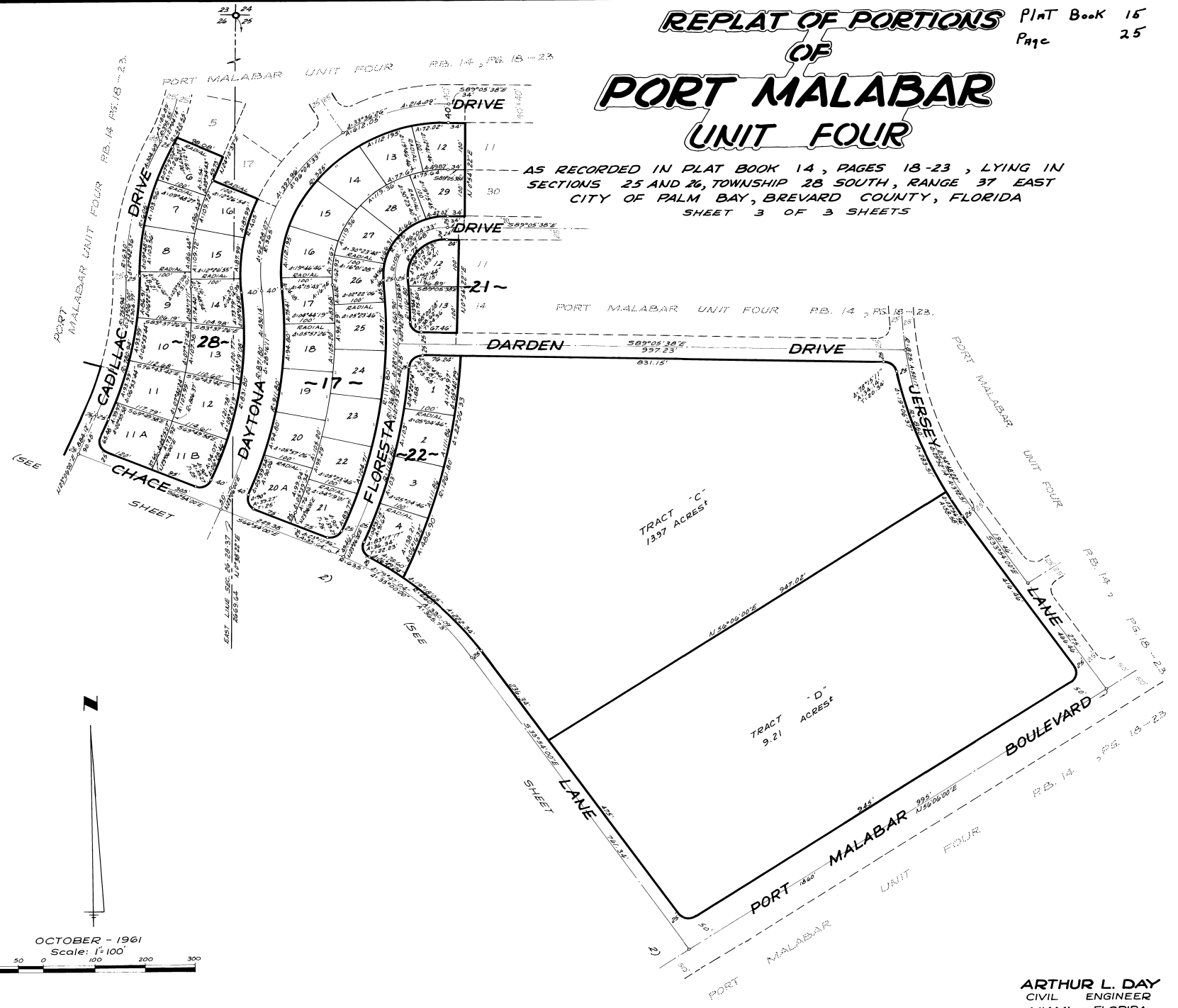


REPLAT OF PORTIONS OF PORT MALABAR UNIT FOUR

PLAT BOOK 15
PAGE 25

AS RECORDED IN PLAT BOOK 14, PAGES 18-23, LYING IN SECTIONS 25 AND 26, TOWNSHIP 28 SOUTH, RANGE 37 EAST CITY OF PALM BAY, BREVARD COUNTY, FLORIDA
SHEET 3 OF 3 SHEETS



CALCULATED BY: R.S.
DRAWN BY: E.C.G.
CHECKED BY: J.D.
APPROVED BY: G.H.

ARTHUR L. DAY
CIVIL ENGINEER
MIAMI - FLORIDA

SHEET 3 OF 3 SHEETS
36 LOTS THIS SHEET