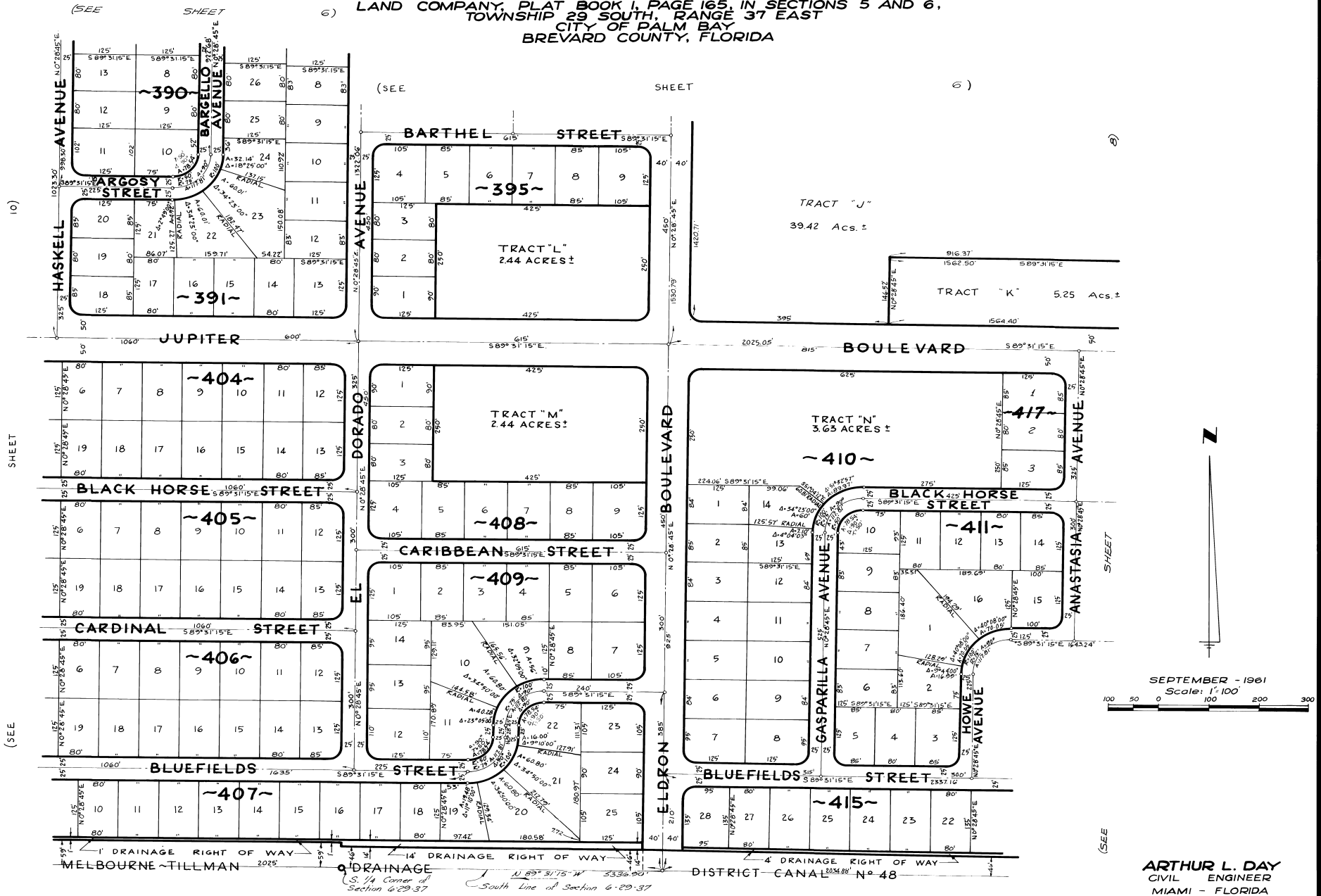


# PORT MALABAR UNIT TEN

PLAT Book 15  
Page 18

A RESUBDIVISION OF PORTIONS OF THE FLORIDA INDIAN RIVER  
LAND COMPANY, PLAT BOOK 1, PAGE 165, IN SECTIONS 5 AND 6,  
TOWNSHIP 29 SOUTH, RANGE 37 EAST  
CITY OF PALM BAY  
BREVARD COUNTY, FLORIDA



CALCULATED BY: J.E.C.  
DRAWN BY: J.R.B.  
CHECKED BY: J.B.  
APPROVED BY: C.G.K.

ARTHUR L. DAY  
CIVIL ENGINEER  
MIAMI - FLORIDA

SHEET 9 OF 10 SHEETS  
155' LOTS THIS SHEET