

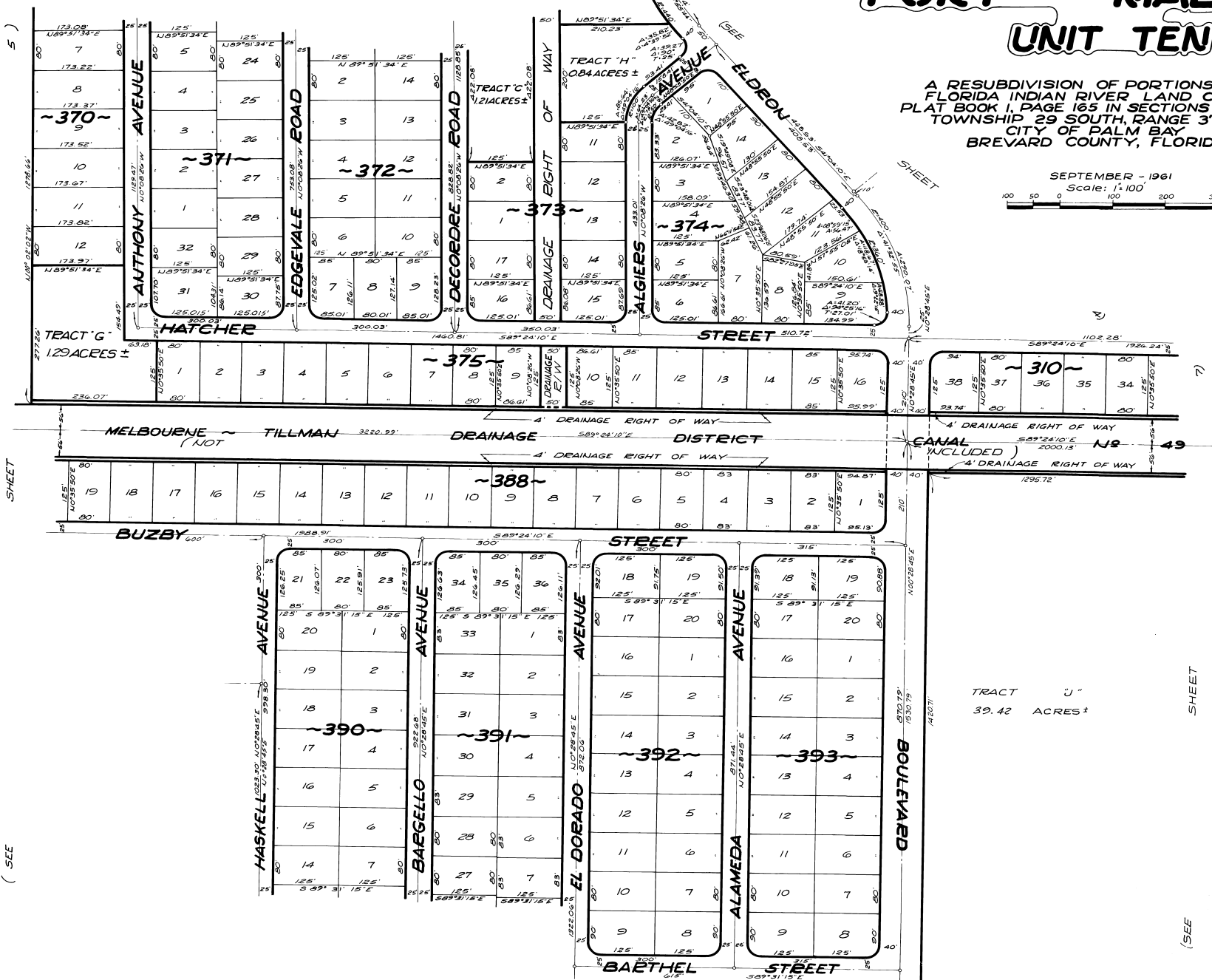
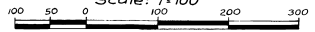
PORT MALABAR

UNIT TEN

PLAT Book 15
Page 15

A RESUBDIVISION OF PORTIONS OF THE
FLORIDA INDIAN RIVER LAND COMPANY,
PLAT BOOK 11, PAGE 165 IN SECTIONS 5 AND 6,
TOWNSHIP 29 SOUTH, RANGE 37 EAST,
CITY OF PALM BAY
BREVARD COUNTY, FLORIDA

SEPTEMBER - 1961
Scale: 1"=100'



CALCULATED BY U.E.C.
DRAWN BY S.P.
CHECKED BY J.B.
APPROVED BY C.G.K.

ARTHUR L. DAY
CIVIL ENGINEER
MIAMI - FLORIDA