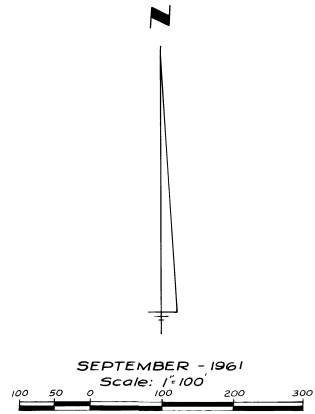
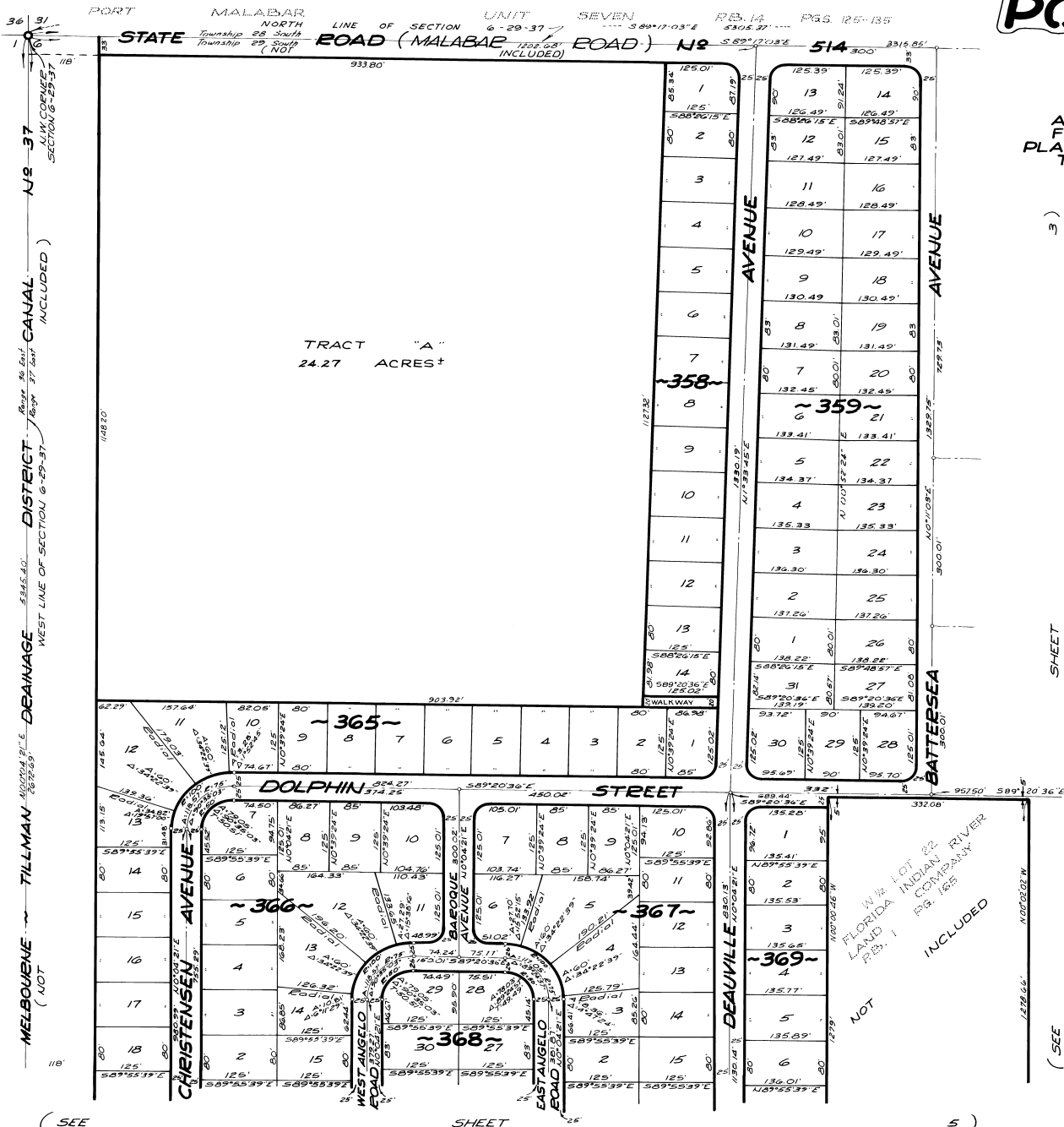


PORT MALABAR

UNIT TEN

Plat Book 15
Page 11

A RESUBDIVISION OF PORTIONS OF THE
FLORIDA INDIAN RIVER LAND COMPANY,
PLAT BOOK 1, PAGE 165 IN SECTIONS 5 AND 6,
TOWNSHIP 29 SOUTH, RANGE 37 EAST,
CITY OF PALM BAY
BREVARD COUNTY, FLORIDA



CALCULATED BY: J.E.C.
DRAWN BY: S.P.
CHECKED BY: J.B.
APPROVED BY: C.G.K.

ARTHUR L. DAY
CIVIL ENGINEER
MIAMI - FLORIDA

SHEET 2 OF 10 SHEETS
101 LOTS THIS SHEET