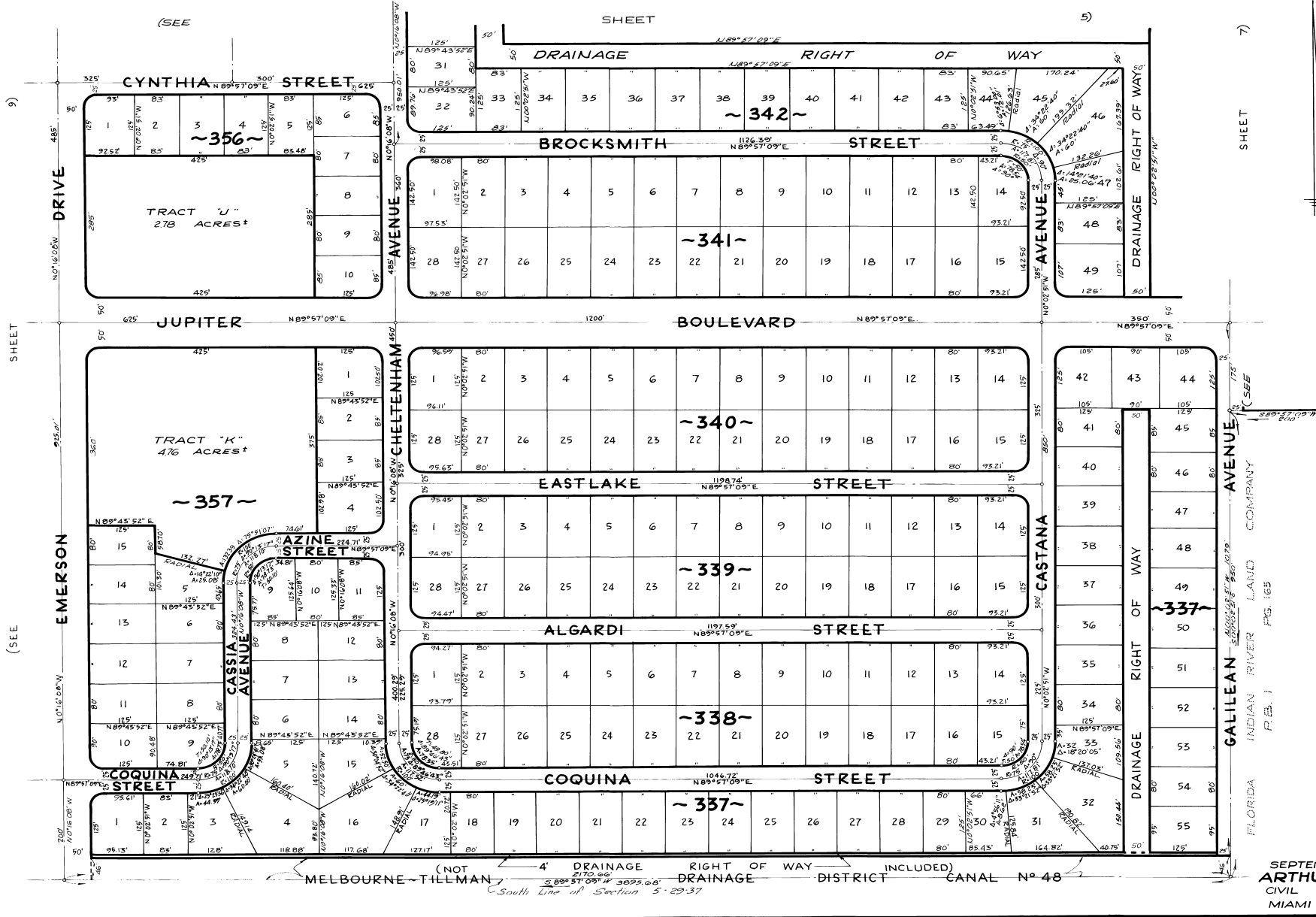


# PORT MALABAR UNIT NINE

SEPTEMBER - 1961  
Scale: 1"=100'

A RESUBDIVISION OF PORTIONS OF THE FLORIDA INDIAN RIVER  
LAND COMPANY, PLAT BOOK 1, PAGE 165, IN SECTIONS 4, 5 AND 6,  
TOWNSHIP 29 SOUTH, RANGE 37 EAST  
CITY OF PALM BAY  
BREVARD COUNTY, FLORIDA



CALCULATED BY: R.G.  
DRAWN BY: J.K.B.  
CHECKED BY: J.S.  
APPROVED BY: C.G.K.

SEPTEMBER - 1961  
**ARTHUR L. DAY**  
CIVIL ENGINEER  
MIAMI - FLORIDA